

Product datasheet for **TA801620S**

CD23 (FCER2) Mouse Monoclonal Antibody [Clone ID: OTI1E5]

Product data:

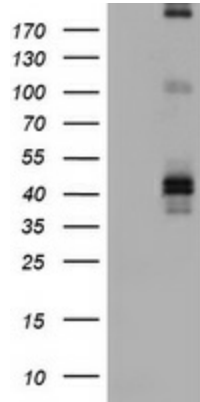
| | |
|-------------------------|---|
| Product Type: | Primary Antibodies |
| Clone Name: | OTI1E5 |
| Applications: | FC, WB |
| Recommended Dilution: | WB 1:2000 |
| Reactivity: | Human |
| Host: | Mouse |
| Isotype: | IgG2b |
| Clonality: | Monoclonal |
| Immunogen: | Human recombinant protein fragment corresponding to amino acids 48-321 of human FCER2 (NP_001993) produced in SF9 cell. |
| Formulation: | PBS (pH 7.3) containing 1% BSA, 50% glycerol and 0.02% sodium azide. |
| Concentration: | 1 mg/ml |
| Purification: | Purified from mouse ascites fluids or tissue culture supernatant by affinity chromatography (protein A/G) |
| Conjugation: | Unconjugated |
| Storage: | Store at -20°C as received. |
| Stability: | Stable for 12 months from date of receipt. |
| Predicted Protein Size: | 36.3 kDa |
| Gene Name: | Fc fragment of IgE receptor II |
| Database Link: | NP_001993 Entrez Gene 2208 Human P06734 |
| Background: | The protein encoded by this gene is a B-cell specific antigen, and a low-affinity receptor for IgE. It has essential roles in B cell growth and differentiation, and the regulation of IgE production. This protein also exists as a soluble secreted form, then functioning as a potent mitogenic growth factor. Alternatively spliced transcript variants encoding different isoforms have been described for this gene. [provided by RefSeq, Jul |



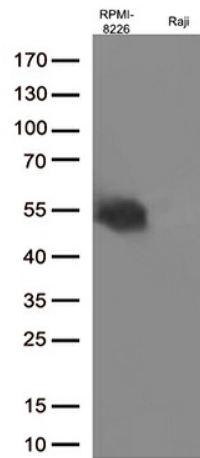
[View online »](#)

Synonyms: BLAST-2; CD23; CD23A; CLEC4J; FCE2; IGEBF
Protein Families: Secreted Protein, Transmembrane
Protein Pathways: Hematopoietic cell lineage

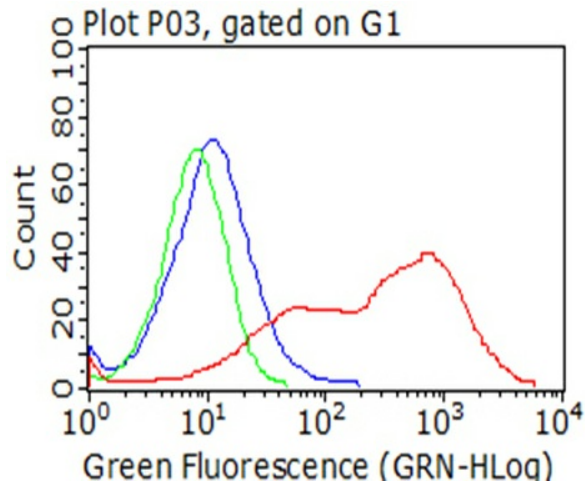
Product images:



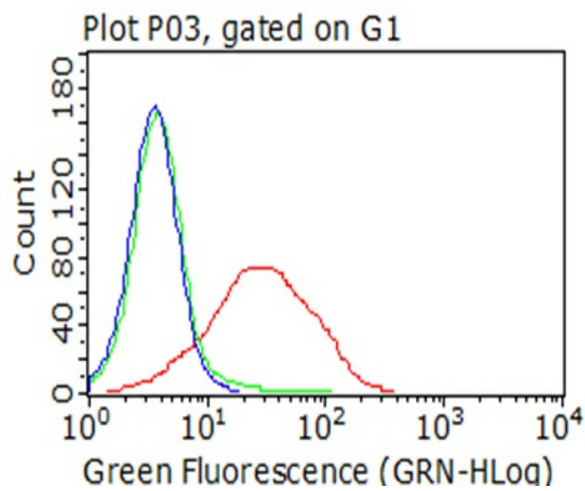
HEK293T cells were transfected with the pCMV6-ENTRY control (Left lane) or pCMV6-ENTRY FCER2 ([RC204335], Right lane) cDNA for 48 hrs and lysed. Equivalent amounts of cell lysates (5 ug per lane) were separated by SDS-PAGE and immunoblotted with anti-FCER2 (1:2000).



Western blot analysis of extracts (35ug) from 2 cell lines lysates by using anti-FCER2 monoclonal antibody (1:500).



Flow cytometric analysis of living 293T cells transfected with FCER2 overexpression plasmid ([RC204335]), Red)/empty vector ([PS100001], Blue) using anti-FCER2 antibody ([TA801620]). Cells incubated with a non-specific antibody (Green) were used as isotype control (1:100).



Flow cytometric analysis of living RPMI-8226 cells, using anti-FCER2 antibody ([TA801620], Red), compared to an isotype control (green), and a PBS control (blue) (1:100).