

Product datasheet for **TA801615S**

MelanA (MLANA) Mouse Monoclonal Antibody [Clone ID: OTI3G1]

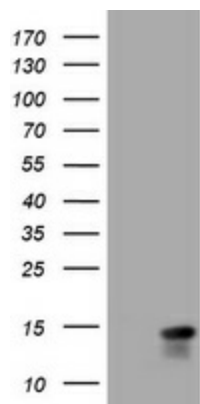
Product data:

| | |
|-------------------------|---|
| Product Type: | Primary Antibodies |
| Clone Name: | OTI3G1 |
| Applications: | IF, WB |
| Recommended Dilution: | WB 1:2000 |
| Reactivity: | Human |
| Host: | Mouse |
| Isotype: | IgG1 |
| Clonality: | Monoclonal |
| Immunogen: | Human recombinant protein fragment corresponding to amino acids 48-118 of human MLANA (NP_005502) produced in E.coli. |
| Formulation: | PBS (pH 7.3) containing 1% BSA, 50% glycerol and 0.02% sodium azide. |
| Concentration: | 1 mg/ml |
| Purification: | Purified from mouse ascites fluids or tissue culture supernatant by affinity chromatography (protein A/G) |
| Conjugation: | Unconjugated |
| Storage: | Store at -20°C as received. |
| Stability: | Stable for 12 months from date of receipt. |
| Predicted Protein Size: | 13 kDa |
| Gene Name: | melan-A |
| Database Link: | NP_005502 Entrez Gene 2315 Human Q16655 |
| Synonyms: | MART-1; MART1 |
| Protein Families: | Transmembrane |

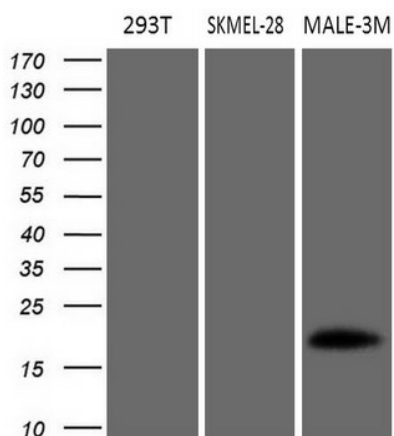


[View online »](#)

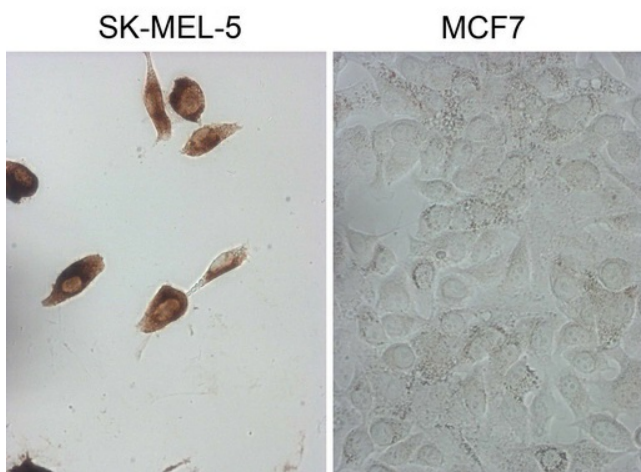
Product images:



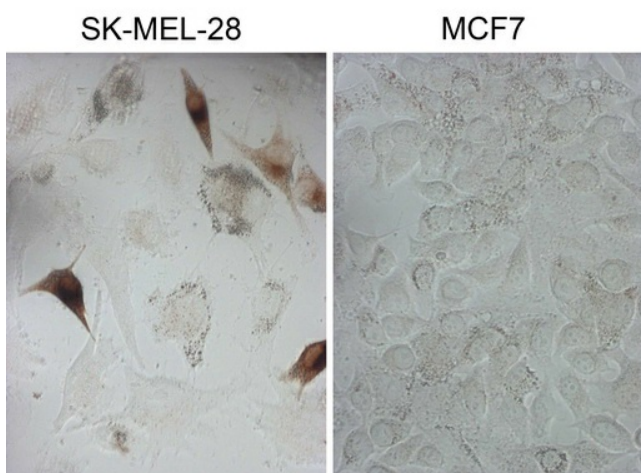
HEK293T cells were transfected with the pCMV6-ENTRY control (Left lane) or pCMV6-ENTRY MLANA ([RC204190], Right lane) cDNA for 48 hrs and lysed. Equivalent amounts of cell lysates (5 ug per lane) were separated by SDS-PAGE and immunoblotted with anti-MLANA. Positive lysates [LY417261] (100ug) and [LC417261] (20ug) can be purchased separately from OriGene.



Western blot analysis of extracts (35ug) from 3 different cell lines by using anti-MLANA monoclonal antibody (1:200).



Immunocytochemistry staining of SK-MEL-5 cells using anti-MLANA mouse monoclonal antibody ([TA801615]) (Left). The right is negative control. (1:100) (1:200)



Immunocytochemistry staining of SK-MEL-28 cells using anti-MLANA mouse monoclonal antibody ([TA801615]) (Left). The right is negative control (1:200).