

Product datasheet for **TA801615BM**

MelanA (MLANA) Mouse Monoclonal Antibody (HRP conjugated) [Clone ID: OTI3G1]

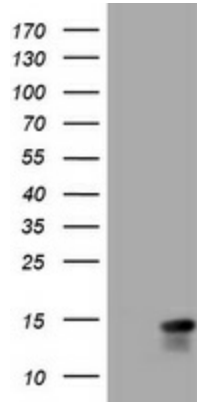
Product data:

Product Type:	Primary Antibodies
Clone Name:	OTI3G1
Applications:	IF, WB
Recommended Dilution:	WB 1:2000
Reactivity:	Human
Host:	Mouse
Isotype:	IgG1
Clonality:	Monoclonal
Immunogen:	Human recombinant protein fragment corresponding to amino acids 48-118 of human MLANA (NP_005502) produced in E.coli.
Formulation:	PBS (pH 7.3) containing 1% BSA, 50% glycerol.
Concentration:	0.5 mg/ml
Purification:	Purified from mouse ascites fluids or tissue culture supernatant by affinity chromatography (protein A/G)
Conjugation:	HRP
Storage:	Store at -20°C as received.
Stability:	Stable for 12 months from date of receipt.
Predicted Protein Size:	13 kDa
Gene Name:	melan-A
Database Link:	NP_005502 Entrez Gene 2315 Human Q16655
Synonyms:	MART-1; MART1
Protein Families:	Transmembrane

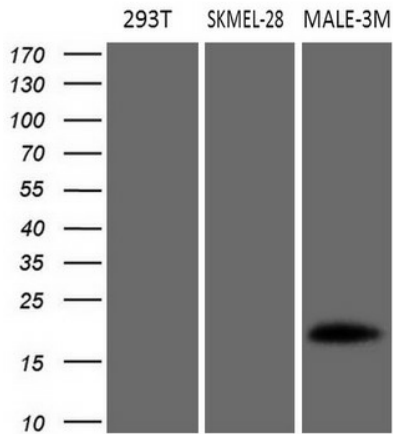


[View online »](#)

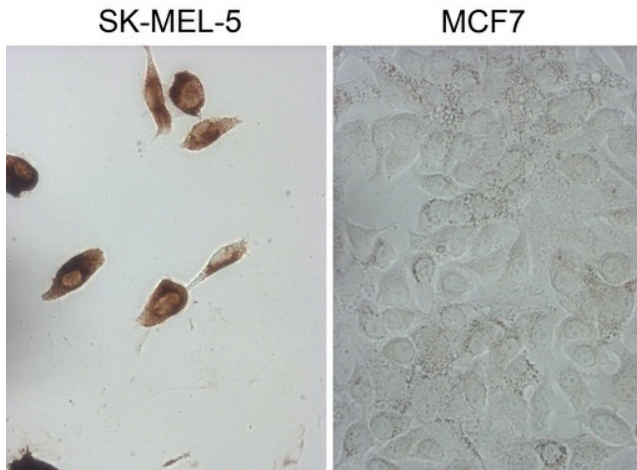
Product images:



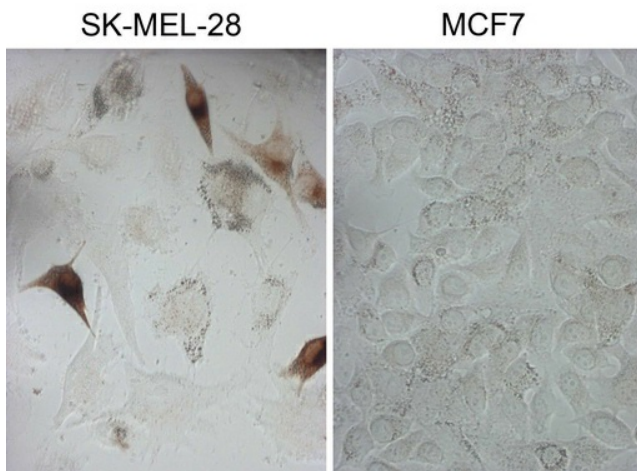
HEK293T cells were transfected with the pCMV6-ENTRY control (Left lane) or pCMV6-ENTRY MLANA ([RC204190], Right lane) cDNA for 48 hrs and lysed. Equivalent amounts of cell lysates (5 ug per lane) were separated by SDS-PAGE and immunoblotted with anti-MLANA. Positive lysates [LY417261] (100ug) and [LC417261] (20ug) can be purchased separately from OriGene.



Western blot analysis of extracts (35ug) from 3 different cell lines by using anti-MLANA monoclonal antibody (1:200).



Immunocytochemistry staining of SK-MEL-5 cells using anti-MLANA mouse monoclonal antibody ([TA801615]) (Left). The right is negative control. (1:100) (1:200)



Immunocytochemistry staining of SK-MEL-28 cells using anti-MLANA mouse monoclonal antibody ([TA801615]) (Left). The right is negative control (1:200).