

Product datasheet for **TA801597M**

Kallikrein 8 (KLK8) Mouse Monoclonal Antibody [Clone ID: OTI5D1]

Product data:

Product Type:	Primary Antibodies
Clone Name:	OTI5D1
Applications:	WB
Recommended Dilution:	WB 1:2000
Reactivity:	Human
Host:	Mouse
Isotype:	IgG2a
Clonality:	Monoclonal
Immunogen:	Human recombinant protein fragment corresponding to amino acids 33-260 of human KLK8 (NP_009127) produced in SF9 cell.
Formulation:	PBS (pH 7.3) containing 1% BSA, 50% glycerol and 0.02% sodium azide.
Concentration:	1 mg/ml
Purification:	Purified from mouse ascites fluids or tissue culture supernatant by affinity chromatography (protein A/G)
Conjugation:	Unconjugated
Storage:	Store at -20°C as received.
Stability:	Stable for 12 months from date of receipt.
Predicted Protein Size:	27.9 kDa
Gene Name:	kallikrein related peptidase 8
Database Link:	NP_009127 Entrez Gene 11202 Human O60259

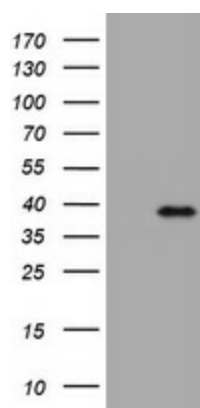
[View online »](#)

Background: Kallikreins are a subgroup of serine proteases having diverse physiological functions. Growing evidence suggests that many kallikreins are implicated in carcinogenesis and some have potential as novel cancer and other disease biomarkers. This gene is one of the fifteen kallikrein subfamily members located in a cluster on chromosome 19. Alternate splicing of this gene results in four transcript variants encoding four different isoforms. The isoforms exhibit distinct patterns of expression that suggest roles in brain plasticity and ovarian cancer. [provided by RefSeq, Jul

Synonyms: HNP; NP; NRPN; PRSS19; TADG14

Protein Families: Druggable Genome, Secreted Protein, Transmembrane

Product images:



HEK293T cells were transfected with the pCMV6-ENTRY control (Left lane) or pCMV6-ENTRY KLK8 ([RC208152], Right lane) cDNA for 48 hrs and lysed. Equivalent amounts of cell lysates (5 ug per lane) were separated by SDS-PAGE and immunoblotted with anti-KLK8. Positive lysates [LY416130] (100ug) and [LC416130] (20ug) can be purchased separately from OriGene.