

## Product datasheet for **TA801574S**

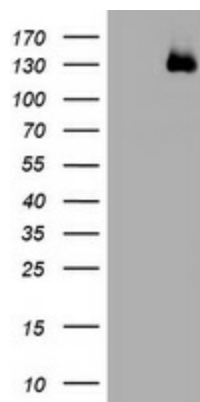
### **KIBRA (WWC1) Mouse Monoclonal Antibody [Clone ID: OTI1B1]**

#### **Product data:**

<b>Product Type:</b>	Primary Antibodies
<b>Clone Name:</b>	OTI1B1
<b>Applications:</b>	WB
<b>Recommended Dilution:</b>	WB 1:2000
<b>Reactivity:</b>	Human, Mouse, Rat
<b>Host:</b>	Mouse
<b>Isotype:</b>	IgG1
<b>Clonality:</b>	Monoclonal
<b>Immunogen:</b>	Full length human recombinant protein of human WWC1 (NP_056053) produced in HEK293T cell.
<b>Formulation:</b>	PBS (pH 7.3) containing 1% BSA, 50% glycerol and 0.02% sodium azide.
<b>Concentration:</b>	1 mg/ml
<b>Purification:</b>	Purified from mouse ascites fluids or tissue culture supernatant by affinity chromatography (protein A/G)
<b>Conjugation:</b>	Unconjugated
<b>Storage:</b>	Store at -20°C as received.
<b>Stability:</b>	Stable for 12 months from date of receipt.
<b>Predicted Protein Size:</b>	125.1 kDa
<b>Gene Name:</b>	WW and C2 domain containing 1
<b>Database Link:</b>	<a href="#">NP_056053</a> <a href="#">Entrez Gene 211652 Mouse</a> <a href="#">Entrez Gene 303039 Rat</a> <a href="#">Entrez Gene 23286 Human</a> <a href="#">Q8IX03</a>
<b>Background:</b>	The protein encoded by this gene is a cytoplasmic phosphoprotein that interacts with PRKC-zeta and dynein light chain-1. Alleles of this gene have been found that enhance memory in some individuals. Three transcript variants encoding different isoforms have been found for this gene. [provided by RefSeq, Mar
<b>Synonyms:</b>	HBEBP3; HBEBP36; KIBRA; MEMRYQL; PPP1R168



[View online »](#)

**Product images:**

HEK293T cells were transfected with the pCMV6-ENTRY control (Left lane) or pCMV6-ENTRY WWC1 ([RC214592], Right lane) cDNA for 48 hrs and lysed. Equivalent amounts of cell lysates (5 ug per lane) were separated by SDS-PAGE and immunoblotted with anti-WWC1. Positive lysates [LY414708] (100ug) and [LC414708] (20ug) can be purchased separately from OriGene.