

Product datasheet for **TA801572AM**

CD23 (FCER2) Mouse Monoclonal Antibody (Biotin conjugated) [Clone ID: OTI2H2]

Product data:

Product Type:	Primary Antibodies
Clone Name:	OTI2H2
Applications:	IHC, WB
Recommended Dilution:	WB 1:2000
Reactivity:	Human
Host:	Mouse
Isotype:	IgG2a
Clonality:	Monoclonal
Immunogen:	Human recombinant protein fragment corresponding to amino acids 48-321 of human FCER2 (NP_001993) produced in Insect.
Formulation:	PBS (pH 7.3) containing 1% BSA, 50% glycerol and 0.02% sodium azide.
Concentration:	0.5 mg/ml
Purification:	Purified from mouse ascites fluids or tissue culture supernatant by affinity chromatography (protein A/G)
Conjugation:	Biotin
Storage:	Store at -20°C as received.
Stability:	Stable for 12 months from date of receipt.
Predicted Protein Size:	36.3 kDa
Gene Name:	Fc fragment of IgE receptor II
Database Link:	NP_001993 Entrez Gene 2208 Human P06734
Background:	The protein encoded by this gene is a B-cell specific antigen, and a low-affinity receptor for IgE. It has essential roles in B cell growth and differentiation, and the regulation of IgE production. This protein also exists as a soluble secreted form, then functioning as a potent mitogenic growth factor. Alternatively spliced transcript variants encoding different isoforms have been described for this gene. [provided by RefSeq, Jul



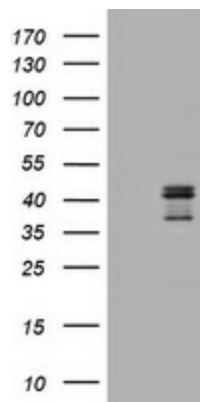
[View online »](#)

Synonyms: BLAST-2; CD23; CD23A; CLEC4J; FCE2; IGEBF

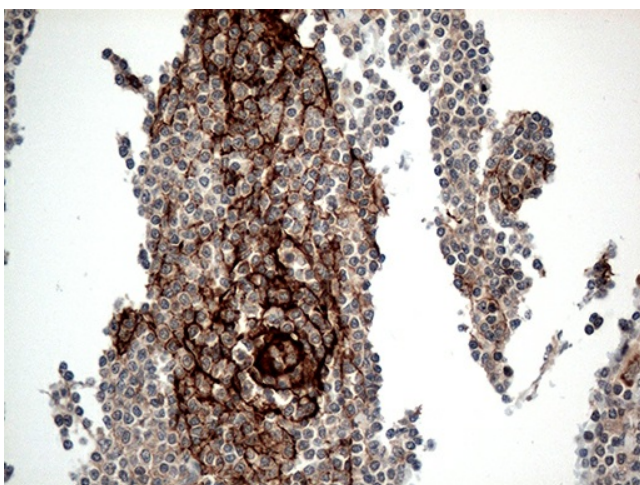
Protein Families: Secreted Protein, Transmembrane

Protein Pathways: Hematopoietic cell lineage

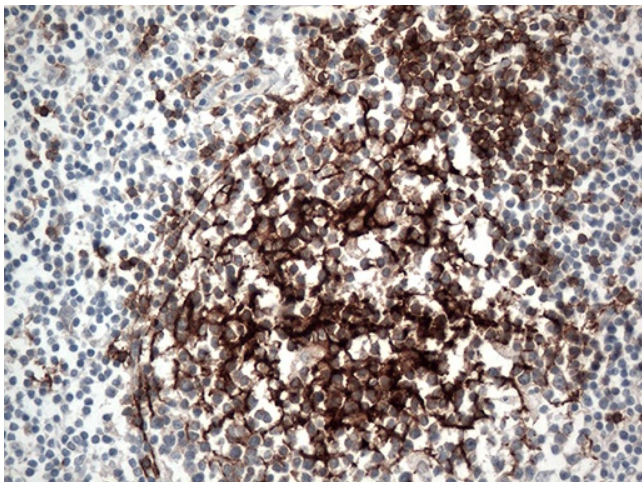
Product images:



HEK293T cells were transfected with the pCMV6-ENTRY control (Left lane) or pCMV6-ENTRY FCER2 ([RC204335], Right lane) cDNA for 48 hrs and lysed. Equivalent amounts of cell lysates (5 ug per lane) were separated by SDS-PAGE and immunoblotted with anti-FCER2 (1:2000).



Immunohistochemical staining of paraffin-embedded Human lymphoma tissue using anti-FCER2 mouse monoclonal antibody. (Heat-induced epitope retrieval by 1mM EDTA in 10mM Tris buffer (pH8.5) at 120°C for 3min, [TA801572]) (1:500)



Immunohistochemical staining of paraffin-embedded Human tonsil within the normal limits using anti-FCER2 mouse monoclonal antibody. (Heat-induced epitope retrieval by 1mM EDTA in 10mM Tris buffer (pH8.5) at 120°C for 3min, [TA801572]) (1:500)