

## Product datasheet for **TA801568S**

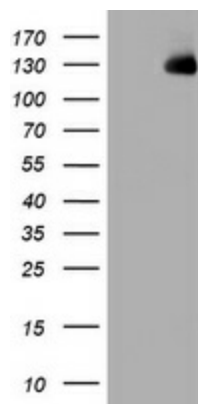
### **KIBRA (WWC1) Mouse Monoclonal Antibody [Clone ID: OTI1H8]**

#### **Product data:**

|                                |  |
|--------------------------------|--|
| <b>Product Type:</b>           | Primary Antibodies   |
| <b>Clone Name:</b>             | OTI1H8   |
| <b>Applications:</b>           | WB   |
| <b>Recommended Dilution:</b>   | WB 1:2000  |
| <b>Reactivity:</b>             | Human, Mouse, Rat  |
| <b>Host:</b>                   | Mouse  |
| <b>Isotype:</b>                | IgG2a  |
| <b>Clonality:</b>              | Monoclonal   |
| <b>Immunogen:</b>              | Full length human recombinant protein of human WWC1 (NP_056053) produced in HEK293T cell.  |
| <b>Formulation:</b>            | PBS (pH 7.3) containing 1% BSA, 50% glycerol and 0.02% sodium azide.   |
| <b>Concentration:</b>          | 1 mg/ml  |
| <b>Purification:</b>           | Purified from mouse ascites fluids or tissue culture supernatant by affinity chromatography (protein A/G)  |
| <b>Conjugation:</b>            | Unconjugated   |
| <b>Storage:</b>                | Store at -20°C as received.  |
| <b>Stability:</b>              | Stable for 12 months from date of receipt.   |
| <b>Predicted Protein Size:</b> | 125.1 kDa  |
| <b>Gene Name:</b>              | WW and C2 domain containing 1  |
| <b>Database Link:</b>          | <a href="#">NP_056053</a><br><a href="#">Entrez Gene 211652 Mouse</a> <a href="#">Entrez Gene 303039 Rat</a> <a href="#">Entrez Gene 23286 Human</a><br><a href="#">Q8IX03</a>   |
| <b>Background:</b>             | The protein encoded by this gene is a cytoplasmic phosphoprotein that interacts with PRKC-zeta and dynein light chain-1. Alleles of this gene have been found that enhance memory in some individuals. Three transcript variants encoding different isoforms have been found for this gene. [provided by RefSeq, Mar |
| <b>Synonyms:</b>               | HBEBP3; HBEBP36; KIBRA; MEMRYQL; PPP1R168  |



[View online »](#)

**Product images:**

HEK293T cells were transfected with the pCMV6-ENTRY control (Cat# [PS100001], Left lane) or pCMV6-ENTRY WWC1 (Cat# [RC214592], Right lane) cDNA for 48 hrs and lysed. Equivalent amounts of cell lysates (5 ug per lane) were separated by SDS-PAGE and immunoblotted with anti-WWC1 (Cat# [TA801568]). Positive lysates [LY414708] (100ug) and [LC414708] (20ug) can be purchased separately from OriGene.