

Product datasheet for **TA801568BM**

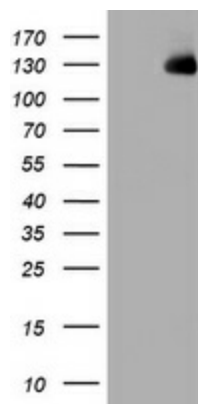
KIBRA (WWC1) Mouse Monoclonal Antibody (HRP conjugated) [Clone ID: OTI1H8]

Product data:

Product Type:	Primary Antibodies
Clone Name:	OTI1H8
Applications:	WB
Recommended Dilution:	WB 1:2000
Reactivity:	Human, Mouse, Rat
Host:	Mouse
Isotype:	IgG2a
Clonality:	Monoclonal
Immunogen:	Full length human recombinant protein of human WWC1 (NP_056053) produced in HEK293T cell.
Formulation:	PBS (pH 7.4) containing 1% BSA, 50% glycerol.
Concentration:	0.5 mg/ml
Purification:	Purified from mouse ascites fluids or tissue culture supernatant by affinity chromatography (protein A/G)
Conjugation:	HRP
Storage:	Store at -20°C as received.
Stability:	Stable for 12 months from date of receipt.
Predicted Protein Size:	125.1 kDa
Gene Name:	WW and C2 domain containing 1
Database Link:	NP_056053 Entrez Gene 211652 Mouse Entrez Gene 303039 Rat Entrez Gene 23286 Human Q8IX03
Background:	The protein encoded by this gene is a cytoplasmic phosphoprotein that interacts with PRKC-zeta and dynein light chain-1. Alleles of this gene have been found that enhance memory in some individuals. Three transcript variants encoding different isoforms have been found for this gene. [provided by RefSeq, Mar
Synonyms:	HBEBP3; HBEBP36; KIBRA; MEMRYQL; PPP1R168



[View online »](#)

Product images:

HEK293T cells were transfected with the pCMV6-ENTRY control (Cat# [PS100001], Left lane) or pCMV6-ENTRY WWC1 (Cat# [RC214592], Right lane) cDNA for 48 hrs and lysed. Equivalent amounts of cell lysates (5 ug per lane) were separated by SDS-PAGE and immunoblotted with anti-WWC1 (Cat# [TA801568]). Positive lysates [LY414708] (100ug) and [LC414708] (20ug) can be purchased separately from OriGene.