

## Product datasheet for **TA801554**

### CD23 (FCER2) Mouse Monoclonal Antibody [Clone ID: OTI6C2]

#### Product data:

Product Type:	Primary Antibodies
Clone Name:	OTI6C2
Applications:	IHC, WB
Recommended Dilution:	WB 1:2000, IHC 1:150
Reactivity:	Human
Host:	Mouse
Isotype:	IgG2a
Clonality:	Monoclonal
Immunogen:	Human recombinant protein fragment corresponding to amino acids 48-321 of human FCER2 (NP_001993) produced in SF9 Cell.
Formulation:	PBS (pH 7.3) containing 1% BSA, 50% glycerol and 0.02% sodium azide.
Concentration:	1 mg/ml
Purification:	Purified from mouse ascites fluids or tissue culture supernatant by affinity chromatography (protein A/G)
Conjugation:	Unconjugated
Storage:	Store at -20°C as received.
Stability:	Stable for 12 months from date of receipt.
Predicted Protein Size:	36.3 kDa
Gene Name:	Fc fragment of IgE receptor II
Database Link:	<a href="#">NP_001993</a> <a href="#">Entrez Gene 2208 Human</a> <a href="#">P06734</a>
Background:	The protein encoded by this gene is a B-cell specific antigen, and a low-affinity receptor for IgE. It has essential roles in B cell growth and differentiation, and the regulation of IgE production. This protein also exists as a soluble secreted form, then functioning as a potent mitogenic growth factor. Alternatively spliced transcript variants encoding different isoforms have been described for this gene. [provided by RefSeq, Jul



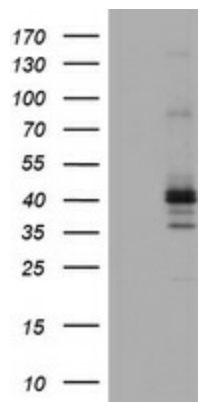
[View online »](#)

**Synonyms:** BLAST-2; CD23; CD23A; CLEC4J; FCE2; IGEBF

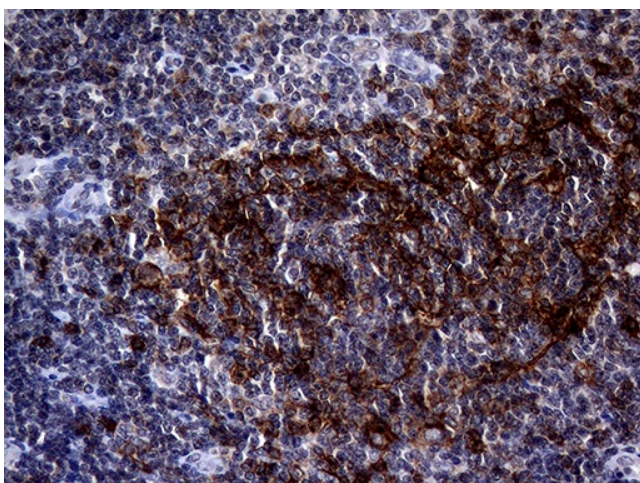
**Protein Families:** Secreted Protein, Transmembrane

**Protein Pathways:** Hematopoietic cell lineage

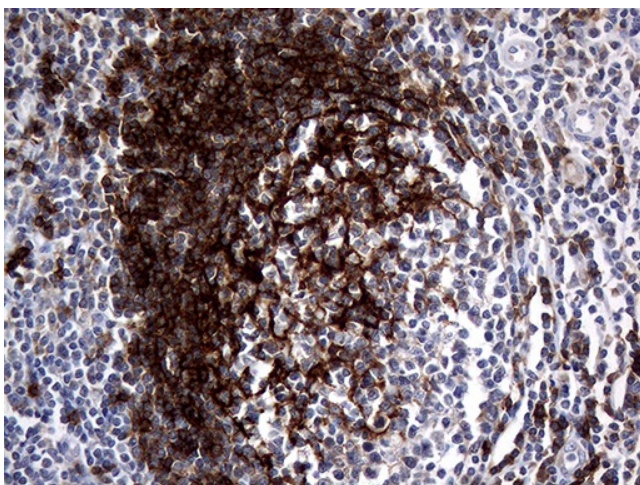
### Product images:



HEK293T cells were transfected with the pCMV6-ENTRY control (Left lane) or pCMV6-ENTRY FCER2 ([RC204335], Right lane) cDNA for 48 hrs and lysed. Equivalent amounts of cell lysates (5 ug per lane) were separated by SDS-PAGE and immunoblotted with anti-FCER2. Positive lysates [LY419592] (100ug) and [LC419592] (20ug) can be purchased separately from OriGene.



Immunohistochemical staining of paraffin-embedded Human lymphoma tissue using anti-FCER2 mouse monoclonal antibody. (Heat-induced epitope retrieval by 1mM EDTA in 10mM Tris buffer (pH8.0) at 120°C for 3min) (TA801554) (1:500)



Immunohistochemical staining of paraffin-embedded Human tonsil within the normal limits using anti-FCER2 mouse monoclonal antibody. (Heat-induced epitope retrieval by 1mM EDTA in 10mM Tris buffer (pH8.0) at 120°C for 3min, TA801554) (1:500)