

## Product datasheet for **TA801517BM**

### **Kallikrein 8 (KLK8) Mouse Monoclonal Antibody (HRP conjugated) [Clone ID: OTI12C6]**

#### **Product data:**

|                         |  |
|-------------------------|--|
| Product Type:           | Primary Antibodies   |
| Clone Name:             | OTI12C6  |
| Applications:           | IHC, WB  |
| Recommended Dilution:   | WB 1:2000, IHC 1:150   |
| Reactivity:             | Human  |
| Host:                   | Mouse  |
| Isotype:                | IgG1   |
| Clonality:              | Monoclonal   |
| Immunogen:              | Human recombinant protein fragment corresponding to amino acids 33-260 of human KLK8 (NP_009127) produced in E.coli. |
| Formulation:            | PBS (pH 7.3) containing 1% BSA, 50% glycerol.  |
| Concentration:          | 0.5 mg/ml  |
| Purification:           | Purified from mouse ascites fluids or tissue culture supernatant by affinity chromatography (protein A/G)            |
| Conjugation:            | HRP  |
| Storage:                | Store at -20°C as received.  |
| Stability:              | Stable for 12 months from date of receipt.   |
| Predicted Protein Size: | 27.9 kDa   |
| Gene Name:              | kallikrein related peptidase 8   |
| Database Link:          | <a href="#">NP_009127</a><br><a href="#">Entrez Gene 11202 Human</a><br><a href="#">O60259</a>                       |



[View online »](#)

**Background:**

Kallikreins are a subgroup of serine proteases having diverse physiological functions. Growing evidence suggests that many kallikreins are implicated in carcinogenesis and some have potential as novel cancer and other disease biomarkers. This gene is one of the fifteen kallikrein subfamily members located in a cluster on chromosome 19. Alternate splicing of this gene results in four transcript variants encoding four different isoforms. The isoforms exhibit distinct patterns of expression that suggest roles in brain plasticity and ovarian cancer. [provided by RefSeq, Jul

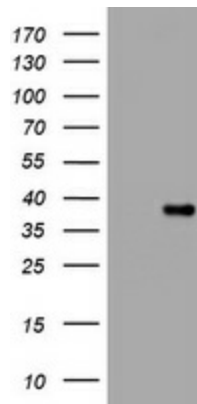
**Synonyms:**

HNP; NP; NRPN; PRSS19; TADG14

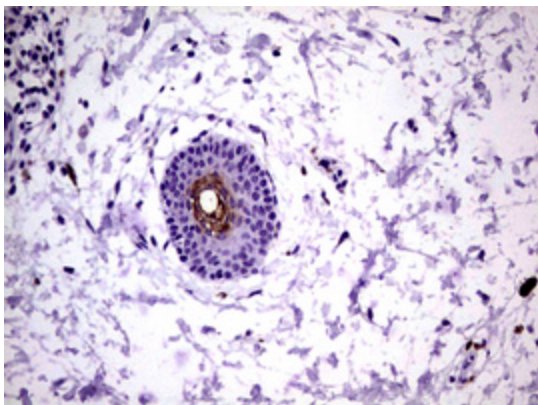
**Protein Families:**

Druggable Genome, Secreted Protein, Transmembrane

**Product images:**



HEK293T cells were transfected with the pCMV6-ENTRY control (Left lane) or pCMV6-ENTRY KLK8 [RC208152], Right lane) cDNA for 48 hrs and lysed. Equivalent amounts of cell lysates (5 ug per lane) were separated by SDS-PAGE and immunoblotted with anti-KLK8. Positive lysates [LY416130] (100ug) and [LC416130] (20ug) can be purchased separately from OriGene.



Immunohistochemical staining of paraffin-embedded Human breast tissue within the normal limits using anti-KLK8 mouse monoclonal antibody. (Heat-induced epitope retrieval by 10mM citric buffer, pH6.0, 120°C for 3min, [TA801517])