

Product datasheet for **TA801480S**

DNA Polymerase iota (POLI) Mouse Monoclonal Antibody [Clone ID: OTI1B9]

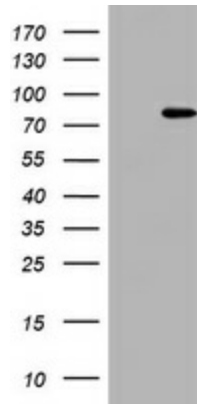
Product data:

Product Type:	Primary Antibodies
Clone Name:	OTI1B9
Applications:	IHC, WB
Recommended Dilution:	WB 1:2000, IHC 1:150
Reactivity:	Human
Host:	Mouse
Isotype:	IgG1
Clonality:	Monoclonal
Immunogen:	Human recombinant protein fragment corresponding to amino acids 458-740 of human POLI (NP_009126) produced in E.coli.
Formulation:	PBS (pH 7.3) containing 1% BSA, 50% glycerol and 0.02% sodium azide.
Concentration:	1 mg/ml
Purification:	Purified from mouse ascites fluids or tissue culture supernatant by affinity chromatography (protein A/G)
Conjugation:	Unconjugated
Storage:	Store at -20°C as received.
Stability:	Stable for 12 months from date of receipt.
Predicted Protein Size:	82.8 kDa
Gene Name:	polymerase (DNA) iota
Database Link:	NP_009126 Entrez Gene 11201 Human Q9UNA4
Synonyms:	RAD3OB; RAD30B
Protein Families:	Druggable Genome

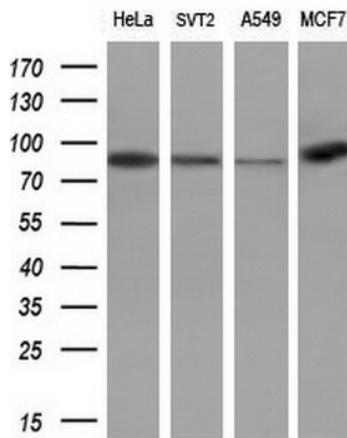


[View online »](#)

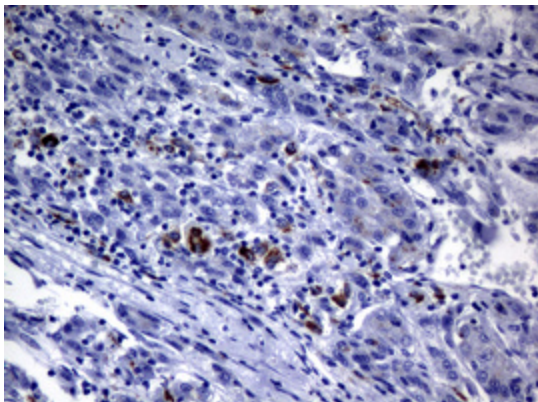
Product images:



HEK293T cells were transfected with the pCMV6-ENTRY control (Left lane) or pCMV6-ENTRY POLI ([RC207550], Right lane) cDNA for 48 hrs and lysed. Equivalent amounts of cell lysates (5 ug per lane) were separated by SDS-PAGE and immunoblotted with anti-POLI. Positive lysates [LY416129] (100ug) and [LC416129] (20ug) can be purchased separately from OriGene.



Western blot analysis of extracts (10ug) from 4 different cell lines by using anti-POLI monoclonal antibody (1:200).



Immunohistochemical staining of paraffin-embedded Carcinoma of Human liver tissue using anti-POLI mouse monoclonal antibody. (Heat-induced epitope retrieval by 10mM citric buffer, pH6.0, 120°C for 3min, [TA801480])