

Product datasheet for **TA801456**

Thyroglobulin (TG) Mouse Monoclonal Antibody [Clone ID: OTI3E12]

Product data:

Product Type:	Primary Antibodies
Clone Name:	OTI3E12
Applications:	IHC, WB
Recommended Dilution:	WB 1:2000, IHC 1:150
Reactivity:	Human
Host:	Mouse
Isotype:	IgG2b
Clonality:	Monoclonal
Immunogen:	Human recombinant protein fragment corresponding to amino acids 2511-2768 of human TG (NP_003226) produced in E.coli.
Formulation:	PBS (pH 7.3) containing 1% BSA, 50% glycerol and 0.02% sodium azide.
Concentration:	1 mg/ml
Purification:	Purified from mouse ascites fluids or tissue culture supernatant by affinity chromatography (protein A/G)
Conjugation:	Unconjugated
Storage:	Store at -20°C as received.
Stability:	Stable for 12 months from date of receipt.
Gene Name:	thyroglobulin
Database Link:	NP_003226 Entrez Gene 7038 Human P01266



[View online »](#)

Background:

Thyroglobulin (Tg) is a glycoprotein homodimer produced predominantly by the thyroid gland. It acts as a substrate for the synthesis of thyroxine and triiodothyronine as well as the storage of the inactive forms of thyroid hormone and iodine. Thyroglobulin is secreted from the endoplasmic reticulum to its site of iodination, and subsequent thyroxine biosynthesis, in the follicular lumen. Mutations in this gene cause thyroid dysmorphogenesis, manifested as goiter, and are associated with moderate to severe congenital hypothyroidism. Polymorphisms in this gene are associated with susceptibility to autoimmune thyroid diseases (AITD) such as Graves disease and Hashimoto thyroiditis. [provided by RefSeq, Nov 2009]

Synonyms:

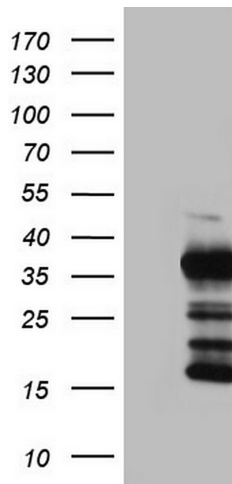
AITD3; TGN

Protein Families:

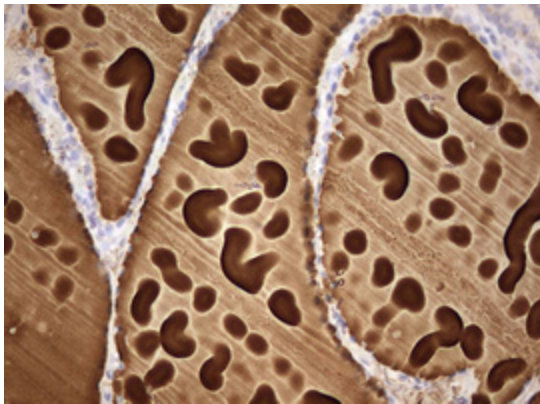
Druggable Genome

Protein Pathways:

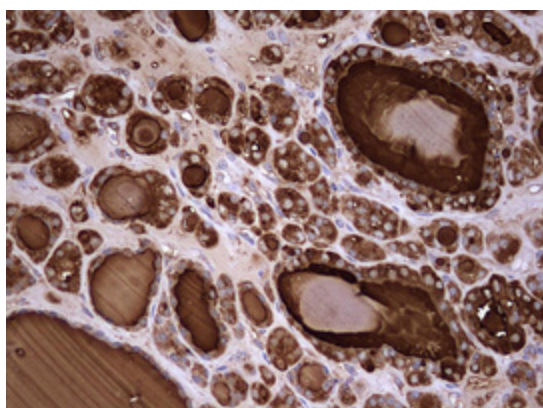
Autoimmune thyroid disease

Product images:

Human recombinant protein fragment corresponding to amino acids 2511-2768 of human TG (NP_003226) produced in E.coli.



Immunohistochemical staining of paraffin-embedded Human thyroid tissue within the normal limits using anti-TG mouse monoclonal antibody. (TA801456; heat-induced epitope retrieval by 1mM EDTA in 10mM Tris, pH8.5, 120°C for 3min)



Immunohistochemical staining of paraffin-embedded Carcinoma of Human thyroid tissue using anti-TG mouse monoclonal antibody. (TA801456; heat-induced epitope retrieval by 1mM EDTA in 10mM Tris, pH8.5, 120°C for 3min)