

## Product datasheet for **TA801423AM**

### **p95 NBS1 (NBN) Mouse Monoclonal Antibody (Biotin conjugated) [Clone ID: OTI3G3]**

#### **Product data:**

<b>Product Type:</b>	Primary Antibodies
<b>Clone Name:</b>	OTI3G3
<b>Applications:</b>	WB
<b>Recommended Dilution:</b>	WB 1:2000
<b>Reactivity:</b>	Human
<b>Host:</b>	Mouse
<b>Isotype:</b>	IgG1
<b>Clonality:</b>	Monoclonal
<b>Immunogen:</b>	Human recombinant protein fragment corresponding to amino acids 183-460 of human NBN (NP_002476) produced in E.coli.
<b>Formulation:</b>	PBS (pH 7.3) containing 1% BSA, 50% glycerol and 0.02% sodium azide.
<b>Concentration:</b>	0.5 mg/ml
<b>Purification:</b>	Purified from mouse ascites fluids or tissue culture supernatant by affinity chromatography (protein A/G)
<b>Conjugation:</b>	Biotin
<b>Storage:</b>	Store at -20°C as received.
<b>Stability:</b>	Stable for 12 months from date of receipt.
<b>Predicted Protein Size:</b>	84.8 kDa
<b>Gene Name:</b>	nibrin
<b>Database Link:</b>	<a href="#">NP_002476</a> <a href="#">Entrez Gene 4683 Human</a> <a href="#">O60934</a>
<b>Background:</b>	Mutations in this gene are associated with Nijmegen breakage syndrome, an autosomal recessive chromosomal instability syndrome characterized by microcephaly, growth retardation, immunodeficiency, and cancer predisposition. The encoded protein is a member of the MRE11/RAD50 double-strand break repair complex which consists of 5 proteins. This gene product is thought to be involved in DNA double-strand break repair and DNA damage-induced checkpoint activation. [provided by RefSeq, Jul 2008]



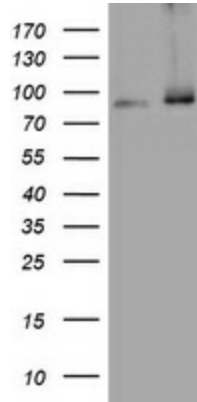
[View online »](#)

**Synonyms:** AT-V1; AT-V2; ATV; NBS; NBS1; P95

**Protein Families:** Druggable Genome

**Protein Pathways:** Homologous recombination

**Product images:**



HEK293T cells were transfected with the pCMV6-ENTRY control (Left lane) or pCMV6-ENTRY NBN ([RC214682], Right lane) cDNA for 48 hrs and lysed. Equivalent amounts of cell lysates (5 ug per lane) were separated by SDS-PAGE and immunoblotted with anti-NBN. Positive lysates [LY419300] (100ug) and [LC419300] (20ug) can be purchased separately from OriGene.