

## Product datasheet for **TA801343**

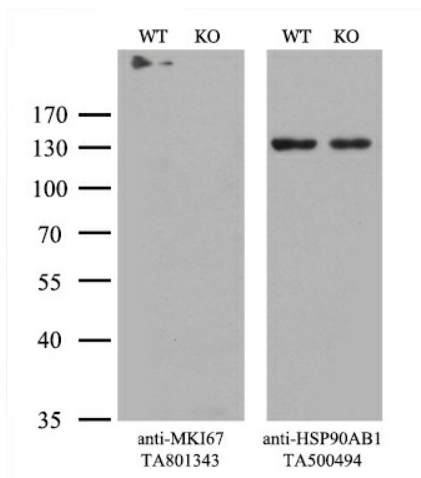
### **Ki67 (MKI67) Rat Monoclonal Antibody [Clone ID: OTI3B6]**

#### **Product data:**

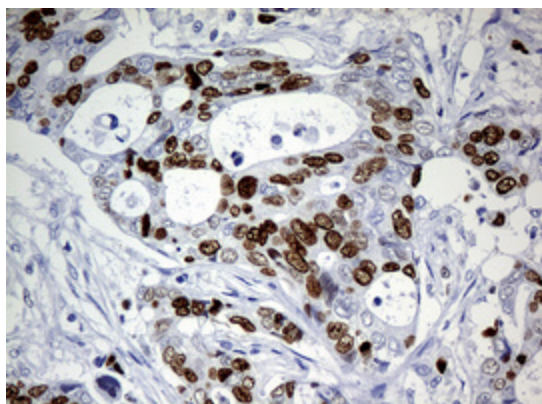
<b>Product Type:</b>	Primary Antibodies
<b>Clone Name:</b>	OTI3B6
<b>Applications:</b>	IHC, WB
<b>Recommended Dilution:</b>	IHC 1:150
<b>Reactivity:</b>	Human
<b>Host:</b>	Rat
<b>Isotype:</b>	IgG1
<b>Clonality:</b>	Monoclonal
<b>Immunogen:</b>	Human recombinant protein fragment corresponding to amino acids 1160-1493 of human MKI67 (NP_002408) produced in E.coli.
<b>Formulation:</b>	PBS (pH 7.3) containing 1% BSA, 50% glycerol and 0.02% sodium azide.
<b>Concentration:</b>	1 mg/ml
<b>Purification:</b>	Purified from mouse ascites fluids or tissue culture supernatant by affinity chromatography (protein A/G)
<b>Conjugation:</b>	Unconjugated
<b>Storage:</b>	Store at -20°C as received.
<b>Stability:</b>	Stable for 12 months from date of receipt.
<b>Gene Name:</b>	marker of proliferation Ki-67
<b>Database Link:</b>	<a href="#">NP_002408</a> <a href="#">Entrez Gene 4288 Human</a> <a href="#">P46013</a>
<b>Background:</b>	This gene encodes a nuclear protein that is associated with and may be necessary for cellular proliferation. Alternatively spliced transcript variants have been described. A related pseudogene exists on chromosome X. [provided by RefSeq, Mar 2009]
<b>Synonyms:</b>	KIA; MIB-; MIB-1; PPP1R105
<b>Protein Families:</b>	Druggable Genome, ES Cell Differentiation/IPS



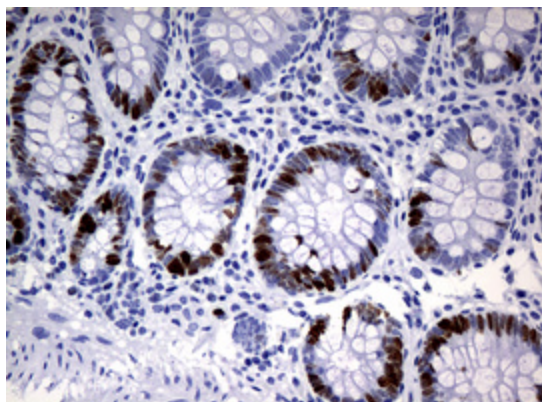
[View online »](#)

**Product images:**


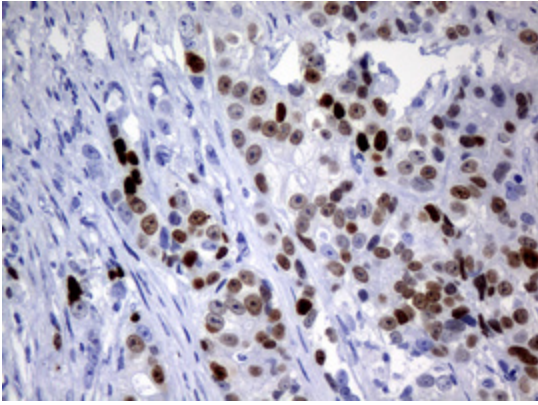
Equivalent amounts of cell lysates (10 ug per lane) of wild-type HeLa cells (WT, Cat# LC810HELA) and MKI67-Knockout HeLa cells (KO, Cat# [LC810145]) were separated by SDS-PAGE and immunoblotted with anti-MKI67 monoclonal antibody TA801343. Then the blotted membrane was stripped and reprobed with anti-HSP90AB1 antibody ([TA500494]) as a loading control (1:200).



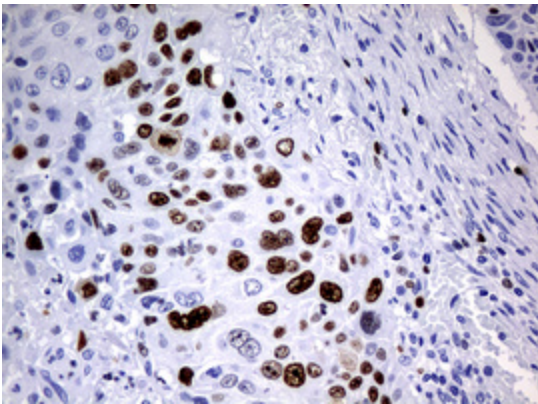
Immunohistochemical staining of paraffin-embedded Adenocarcinoma of Human breast tissue using anti-MKI67 rat monoclonal antibody. (TA801343; heat-induced epitope retrieval by 10mM citric buffer, pH6.0, 120°C for 3min)



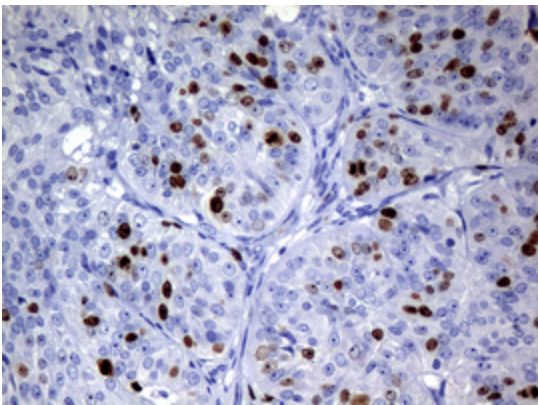
Immunohistochemical staining of paraffin-embedded Human colon tissue within the normal limits using anti-MKI67 rat monoclonal antibody. (TA801343; heat-induced epitope retrieval by 10mM citric buffer, pH6.0, 120°C for 3min)



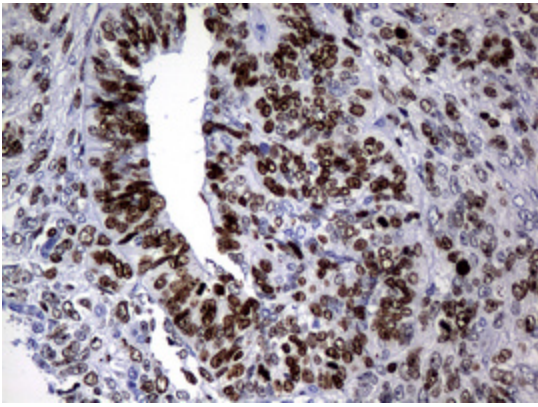
Immunohistochemical staining of paraffin-embedded Adenocarcinoma of Human colon tissue using anti-MKI67 rat monoclonal antibody. (TA801343; heat-induced epitope retrieval by 10mM citric buffer, pH6.0, 120°C for 3min)



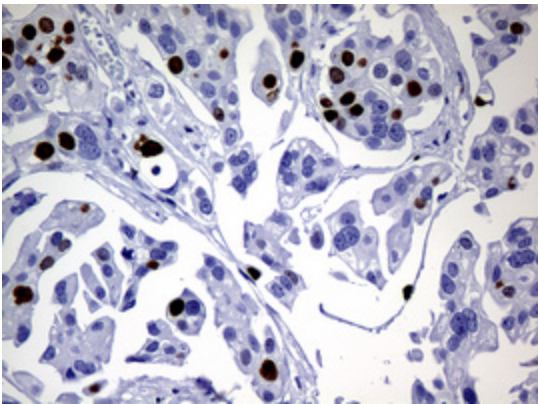
Immunohistochemical staining of paraffin-embedded Carcinoma of Human lung tissue using anti-MKI67 rat monoclonal antibody. (TA801343; heat-induced epitope retrieval by 10mM citric buffer, pH6.0, 120°C for 3min)



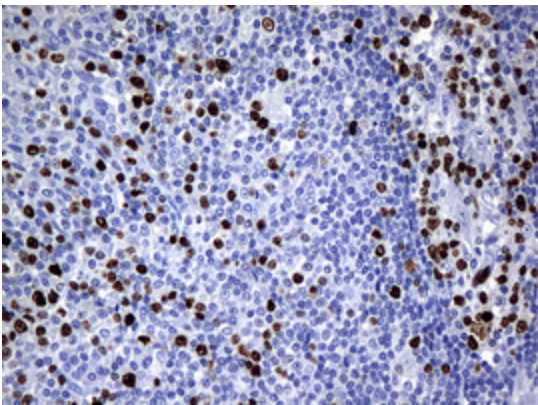
Immunohistochemical staining of paraffin-embedded Adenocarcinoma of Human ovary tissue using anti-MKI67 rat monoclonal antibody. (TA801343; heat-induced epitope retrieval by 10mM citric buffer, pH6.0, 120°C for 3min)



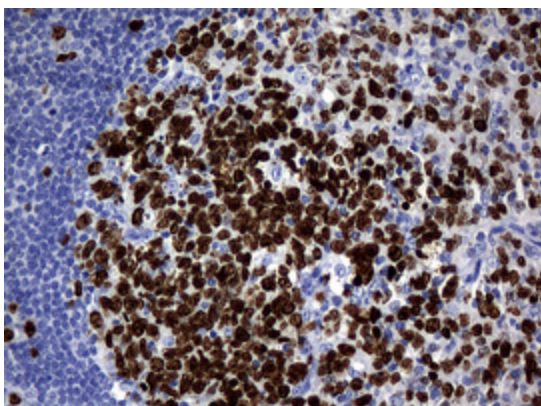
Immunohistochemical staining of paraffin-embedded Adenocarcinoma of Human endometrium tissue using anti-MKI67 rat monoclonal antibody. (TA801343; heat-induced epitope retrieval by 10mM citric buffer, pH6.0, 120°C for 3min)



Immunohistochemical staining of paraffin-embedded Carcinoma of Human bladder tissue using anti-MKI67 rat monoclonal antibody. (TA801343; heat-induced epitope retrieval by 10mM citric buffer, pH6.0, 120°C for 3min)



Immunohistochemical staining of paraffin-embedded Human Lymphoma tissue using anti-MKI67 rat monoclonal antibody. (TA801343; heat-induced epitope retrieval by 10mM citric buffer, pH6.0, 120°C for 3min)



Immunohistochemical staining of paraffin-embedded Human tonsil within the normal limits using anti-MKI67 rat monoclonal antibody. (TA801343; heat-induced epitope retrieval by 10mM citric buffer, pH6.0, 120°C for 3min)