

Product datasheet for **TA801318M**

Vimentin (VIM) Mouse Monoclonal Antibody [Clone ID: OTI1D3]

Product data:

Product Type:	Primary Antibodies
Clone Name:	OTI1D3
Applications:	IF, WB
Recommended Dilution:	WB 1:2000
Reactivity:	Human, Mouse, Rat
Host:	Mouse
Isotype:	IgG2a
Clonality:	Monoclonal
Immunogen:	Full length human recombinant protein of human VIM (NP_003371) produced in E.coli.
Formulation:	PBS (pH 7.3) containing 1% BSA, 50% glycerol and 0.02% sodium azide.
Concentration:	1 mg/ml
Purification:	Purified from mouse ascites fluids or tissue culture supernatant by affinity chromatography (protein A/G)
Conjugation:	Unconjugated
Storage:	Store at -20°C as received.
Stability:	Stable for 12 months from date of receipt.
Predicted Protein Size:	53.5 kDa
Gene Name:	vimentin
Database Link:	NP_003371 Entrez Gene 22352 Mouse Entrez Gene 81818 Rat Entrez Gene 7431 Human P08670


[View online »](#)

Background:

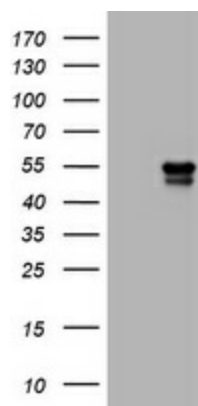
This gene encodes a member of the intermediate filament family. Intermediate filaments, along with microtubules and actin microfilaments, make up the cytoskeleton. The protein encoded by this gene is responsible for maintaining cell shape, integrity of the cytoplasm, and stabilizing cytoskeletal interactions. It is also involved in the immune response, and controls the transport of low-density lipoprotein (LDL)-derived cholesterol from a lysosome to the site of esterification. It functions as an organizer of a number of critical proteins involved in attachment, migration, and cell signaling. Mutations in this gene causes a dominant, pulverulent cataract. [provided by RefSeq, Jun 2009]

Synonyms:

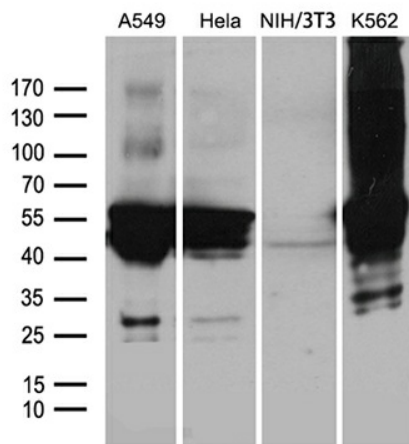
CTRCT30; HEL113

Protein Families:

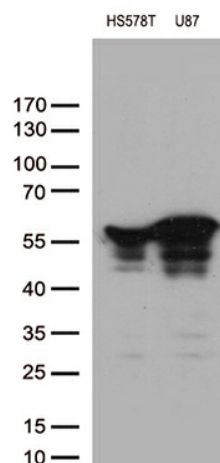
ES Cell Differentiation/IPS

Product images:


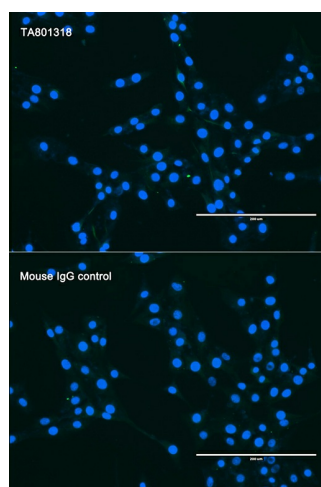
HEK293T cells were transfected with the pCMV6-ENTRY control (Left lane) or pCMV6-ENTRY VIM ([RC201546], Right lane) cDNA for 48 hrs and lysed. Equivalent amounts of cell lysates (5 ug per lane) were separated by SDS-PAGE and immunoblotted with anti-VIM. (1:2. Positive lysates [LY401165] (100ug) and [LC401165] (20ug) can be purchased separately from OriGene.



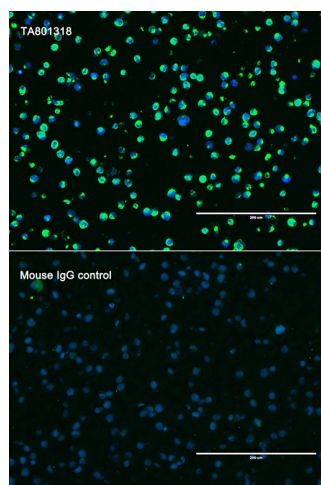
Western blot analysis of extracts (35ug) from 4 different cell lines by using anti-VIM monoclonal antibody (1:500).



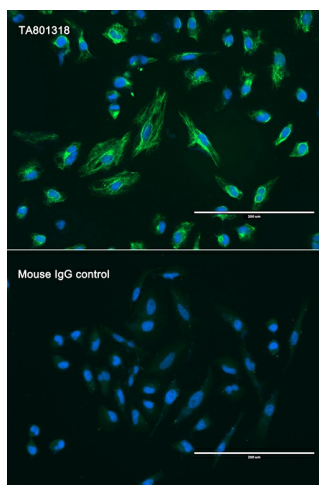
Western blot analysis of extracts (35ug) from 2 different cell lines by using anti-VIM monoclonal antibody (1:500).



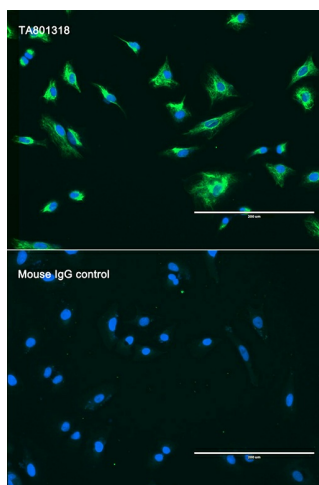
Immunofluorescent staining of NIH/3T3 cells using anti-VIM mouse monoclonal antibody ([TA801318], top) or mouse IgG control (below). Nuclear were labeled with Hoechst 33342 (blue). This figure shows negative staining of this antibody (1:200).



Immunofluorescent staining of paraffin-embedded K562 cell pellets using anti-VIM mouse monoclonal antibody ([TA801318], top) or mouse IgG control (below). Nuclear were labeled with Hoechst 33342 (blue). (Heat-induced epitope retrieval by 1mM EDTA in 10mM Tris buffer (pH8.5) at 120°C for 2.5 min) (1:200).



Immunofluorescent staining of A549 cells using anti-VIM mouse monoclonal antibody ([TA801318], top) or mouse IgG control (below). Nuclear were labeled with Hoechst 33342 (blue) (1:200).



Immunofluorescent staining of HeLa cells using anti-VIM mouse monoclonal antibody ([TA801318], top) or mouse IgG control (below). Nuclear were labeled with Hoechst 33342 (blue) (1:200).