

## Product datasheet for **TA801288M**

### ALK Mouse Monoclonal Antibody [Clone ID: OTI15B2]

#### Product data:

Product Type:	Primary Antibodies
Clone Name:	OTI15B2
Applications:	LMNX, WB
Recommended Dilution:	WB 1:2000
Reactivity:	Human, Mouse, Rat
Host:	Mouse
Isotype:	IgG2a
Clonality:	Monoclonal
Immunogen:	Human recombinant protein fragment corresponding to amino acids 1300-1620 of human ALK (NP_004295)produced in E.coli.
Formulation:	PBS (pH 7.3) containing 1% BSA, 50% glycerol and 0.02% sodium azide.
Concentration:	1 mg/ml
Purification:	Purified from mouse ascites fluids or tissue culture supernatant by affinity chromatography (protein A/G)
Conjugation:	Unconjugated
Storage:	Store at -20°C as received.
Stability:	Stable for 12 months from date of receipt.
Predicted Protein Size:	176.3 kDa
Gene Name:	anaplastic lymphoma receptor tyrosine kinase
Database Link:	<a href="#">NP_004295</a> <a href="#">Entrez Gene 11682 Mouse</a> <a href="#">Entrez Gene 266802 Rat</a> <a href="#">Entrez Gene 238 Human</a> <a href="#">Q9UM73</a>

[View online »](#)

**Background:**

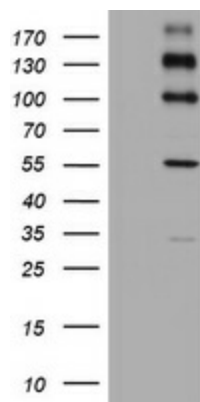
This gene encodes a receptor tyrosine kinase, which belongs to the insulin receptor superfamily. This protein comprises an extracellular domain, an hydrophobic stretch corresponding to a single pass transmembrane region, and an intracellular kinase domain. It plays an important role in the development of the brain and exerts its effects on specific neurons in the nervous system. This gene has been found to be rearranged, mutated, or amplified in a series of tumours including anaplastic large cell lymphomas, neuroblastoma, and non-small cell lung cancer. The chromosomal rearrangements are the most common genetic alterations in this gene, which result in creation of multiple fusion genes in tumourigenesis, including ALK (chromosome 2)/EML4 (chromosome 2), ALK/RANBP2 (chromosome 2), ALK/ATIC (chromosome 2), ALK/TFG (chromosome 3), ALK/NPM1 (chromosome 5), ALK/SQSTM1 (chromosome 5), ALK/KIF5B (chromosome 10), ALK/CLTC (chromosome 17), ALK/TPM4 (chromosome 19), and ALK/MSN (chromosome X). [provided by RefSeq, Jan 2011]

**Synonyms:**

CD246; NBLST3

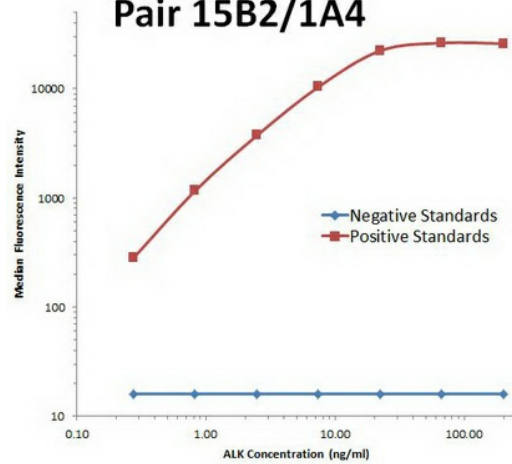
**Protein Families:**

Druggable Genome, Protein Kinase

**Product images:**


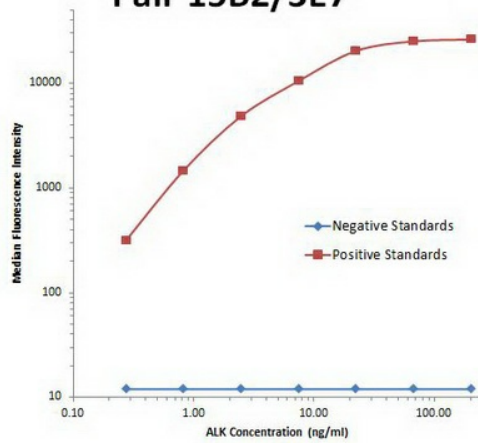
HEK293T cells were transfected with the pCMV6-ENTRY control (Left lane) or pCMV6-ENTRY ALK ([RC222485], Right lane) cDNA for 48 hrs and lysed. Equivalent amounts of cell lysates (5 ug per lane) were separated by SDS-PAGE and immunoblotted with anti-ALK. Positive lysates [LY418072] (100ug) and [LC418072] (20ug) can be purchased separately from OriGene.

### Pair 15B2/1A4



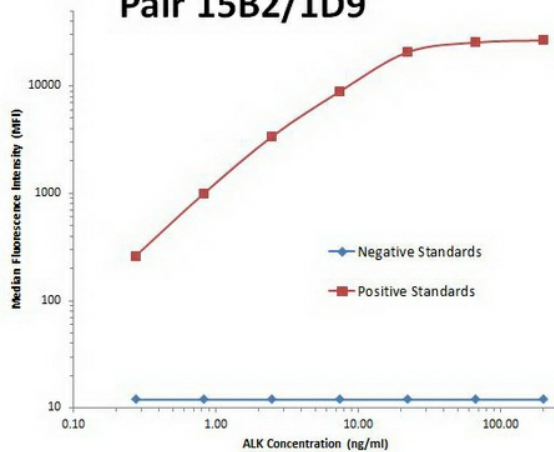
ALK Luminex with 15B2 Capture ([TA801288]) and 1A4 Detection ([TA801287]) Antibodies. Substrate used: full length HEK293 cells expressed recombinant ALK protein ([TP322485]).

### Pair 15B2/3E7



ALK Luminex with 15B2 Capture ([TA801288]) and 3E7 Detection ([TA801144]) Antibodies. Substrate used: full length HEK293 cells expressed recombinant ALK protein ([TP322485]).

### Pair 15B2/1D9



ALK Luminex with 15B2 Capture ([TA801288]) and 1D9 Detection ([TA801141]) Antibodies. Substrate used: full length HEK293 cells expressed recombinant ALK protein ([TP322485]).