

## Product datasheet for **TA801228**

### **p18 INK4c (CDKN2C) Mouse Monoclonal Antibody [Clone ID: OTI1H1]**

#### **Product data:**

Product Type:	Primary Antibodies
Clone Name:	OTI1H1
Applications:	WB
Recommended Dilution:	WB 1:2000
Reactivity:	Human, Mouse, Rat
Host:	Mouse
Isotype:	IgG1
Clonality:	Monoclonal
Immunogen:	Full length human recombinant protein of human CDKN2C (NP_001253) produced in E.coli.
Formulation:	PBS (pH 7.3) containing 1% BSA, 50% glycerol and 0.02% sodium azide.
Concentration:	1 mg/ml
Purification:	Purified from mouse ascites fluids or tissue culture supernatant by affinity chromatography (protein A/G)
Conjugation:	Unconjugated
Storage:	Store at -20°C as received.
Stability:	Stable for 12 months from date of receipt.
Predicted Protein Size:	17.9 kDa
Gene Name:	cyclin-dependent kinase inhibitor 2C
Database Link:	<a href="#">NP_001253</a> <a href="#">Entrez Gene 12580 Mouse</a> <a href="#">Entrez Gene 54238 Rat</a> <a href="#">Entrez Gene 1031 Human</a> <a href="#">P42773</a>



[View online »](#)

**Background:**

The protein encoded by this gene is a member of the INK4 family of cyclin-dependent kinase inhibitors. This protein has been shown to interact with CDK4 or CDK6, and prevent the activation of the CDK kinases, thus function as a cell growth regulator that controls cell cycle G1 progression. Ectopic expression of this gene was shown to suppress the growth of human cells in a manner that appears to correlate with the presence of a wild-type RB1 function. Studies in the knockout mice suggested the roles of this gene in regulating spermatogenesis, as well as in suppressing tumorigenesis. Two alternatively spliced transcript variants of this gene, which encode an identical protein, have been reported. [provided by RefSeq, Jul 2008]

**Synonyms:**

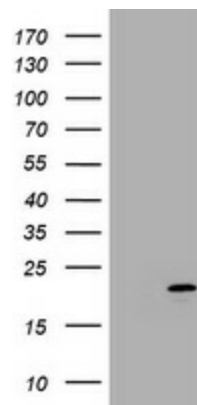
INK4C; p18; p18-INK4C

**Protein Families:**

Druggable Genome

**Protein Pathways:**

Cell cycle

**Product images:**

HEK293T cells were transfected with the pCMV6-ENTRY control (Left lane) or pCMV6-ENTRY CDKN2C ([RC213083], Right lane) cDNA for 48 hrs and lysed. Equivalent amounts of cell lysates (5 ug per lane) were separated by SDS-PAGE and immunoblotted with anti-CDKN2C. Positive lysates [LY420041] (100ug) and [LC420041] (20ug) can be purchased separately from OriGene.