

## Product datasheet for **TA801223AM**

### Neurofilament (NEFL) Mouse Monoclonal Antibody (Biotin conjugated) [Clone ID: OTI2F5]

#### Product data:

Product Type:	Primary Antibodies
Clone Name:	OTI2F5
Applications:	WB
Recommended Dilution:	WB 1:2000
Reactivity:	Human, Mouse, Rat
Host:	Mouse
Isotype:	IgG2b
Clonality:	Monoclonal
Immunogen:	Human recombinant protein fragment corresponding to amino acids 1-360 of human NEFL (NP_006149) produced in E.coli.
Formulation:	PBS (pH 7.3) containing 1% BSA, 50% glycerol and 0.02% sodium azide.
Concentration:	0.5 mg/ml
Purification:	Purified from mouse ascites fluids or tissue culture supernatant by affinity chromatography (protein A/G)
Conjugation:	Biotin
Storage:	Store at -20°C as received.
Stability:	Stable for 12 months from date of receipt.
Predicted Protein Size:	61.3 kDa
Gene Name:	neurofilament, light polypeptide
Database Link:	<a href="#">NP_006149</a> <a href="#">Entrez Gene 18039 Mouse</a> <a href="#">Entrez Gene 83613 Rat</a> <a href="#">Entrez Gene 4747 Human</a> <a href="#">P07196</a>



[View online »](#)

**Background:**

Neurofilaments are type IV intermediate filament heteropolymers composed of light, medium, and heavy chains. Neurofilaments comprise the axoskeleton and they functionally maintain the neuronal caliber. They may also play a role in intracellular transport to axons and dendrites. This gene encodes the light chain neurofilament protein. Mutations in this gene cause Charcot-Marie-Tooth disease types 1F (CMT1F) and 2E (CMT2E), disorders of the peripheral nervous system that are characterized by distinct neuropathies. A pseudogene has been identified on chromosome Y. [provided by RefSeq, Oct 2008]

**Synonyms:**

CMT1F; CMT2E; NF-L; NF68; NFL; PPP1R110

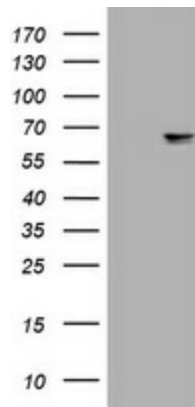
**Protein Families:**

Druggable Genome, ES Cell Differentiation/IPS

**Protein Pathways:**

Amyotrophic lateral sclerosis (ALS)

**Product images:**



HEK293T cells were transfected with the pCMV6-ENTRY control (Cat# [PS100001], Left lane) or pCMV6-ENTRY NEFL (Cat# [RC205920], Right lane) cDNA for 48 hrs and lysed. Equivalent amounts of cell lysates (5 ug per lane) were separated by SDS-PAGE and immunoblotted with anti-NEFL (Cat# [TA801223]). Positive lysates [LY416829] (100ug) and [LC416829] (20ug) can be purchased separately from OriGene.