

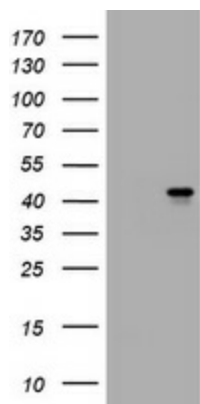
## Product datasheet for **TA801210M**

### **MUC16 Mouse Monoclonal Antibody [Clone ID: OTI2E1]**

#### **Product data:**

Product Type:	Primary Antibodies
Clone Name:	OTI2E1
Applications:	WB
Recommended Dilution:	WB 1:2000
Reactivity:	Human
Host:	Mouse
Isotype:	IgG1
Clonality:	Monoclonal
Immunogen:	Human recombinant protein fragment corresponding to amino acids 10329-10628 of human MUC16 (NP_078966) produced in E.coli.
Formulation:	PBS (pH 7.3) containing 1% BSA, 50% glycerol and 0.02% sodium azide.
Concentration:	1 mg/ml
Purification:	Purified from mouse ascites fluids or tissue culture supernatant by affinity chromatography (protein A/G)
Conjugation:	Unconjugated
Storage:	Store at -20°C as received.
Stability:	Stable for 12 months from date of receipt.
Gene Name:	mucin 16, cell surface associated
Database Link:	<a href="#">NP_078966</a> <a href="#">Entrez Gene 94025 Human</a> <a href="#">Q8WXI7</a>
Synonyms:	CA125

[View online »](#)

**Product images:**

E.coli lysate (left lane) and E.coli lysate expressing Human recombinant protein fragment (right lane) corresponding to amino acids 10329-10628 of human MUC16 (NP\_078966) were separated by SDS-PAGE and immunoblotted with anti-MUC16.