

Product datasheet for **TA801208**

RRM1 Mouse Monoclonal Antibody [Clone ID: OTI5G5]

Product data:

Product Type:	Primary Antibodies
Clone Name:	OTI5G5
Applications:	IHC, WB
Recommended Dilution:	WB 1:2000, IHC 1:150
Reactivity:	Human, Mouse, Rat
Host:	Mouse
Isotype:	IgG1
Clonality:	Monoclonal
Immunogen:	Human recombinant protein fragment corresponding to amino acids 541-792 of human RRM1 (NP_001024) produced in E.coli.
Formulation:	PBS (pH 7.3) containing 1% BSA, 50% glycerol and 0.02% sodium azide.
Concentration:	1 mg/ml
Purification:	Purified from mouse ascites fluids or tissue culture supernatant by affinity chromatography (protein A/G)
Conjugation:	Unconjugated
Storage:	Store at -20°C as received.
Stability:	Stable for 12 months from date of receipt.
Predicted Protein Size:	89.9 kDa
Gene Name:	ribonucleotide reductase catalytic subunit M1
Database Link:	NP_001024 Entrez Gene 20133 Mouse Entrez Gene 685579 Rat Entrez Gene 6240 Human P23921



[View online »](#)

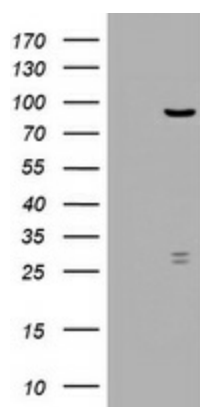
Background: This gene encodes one of two non-identical subunits that constitute ribonucleoside-diphosphate reductase, an enzyme essential for the production of deoxyribonucleotides prior to DNA synthesis in S phase of dividing cells. It is one of several genes located in the imprinted gene domain of 11p15.5, an important tumor-suppressor gene region. Alterations in this region have been associated with the Beckwith-Wiedemann syndrome, Wilms tumor, rhabdomyosarcoma, adrenocortical carcinoma, and lung, ovarian, and breast cancer. This gene may play a role in malignancies and disease that involve this region. [provided by RefSeq, Jul 2008]

Synonyms: R1; RIR1; RR1

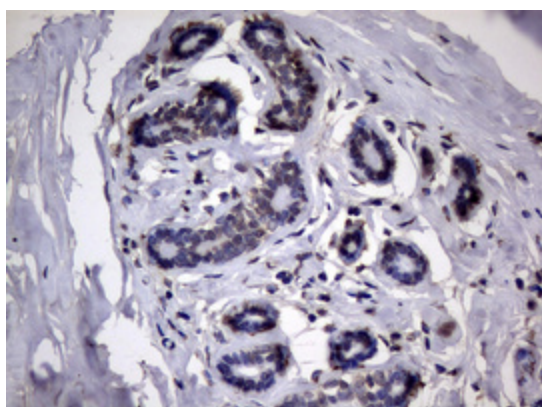
Protein Families: Druggable Genome

Protein Pathways: Glutathione metabolism, Metabolic pathways, Purine metabolism, Pyrimidine metabolism

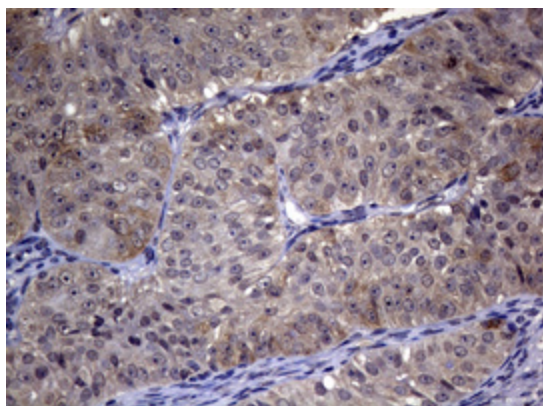
Product images:



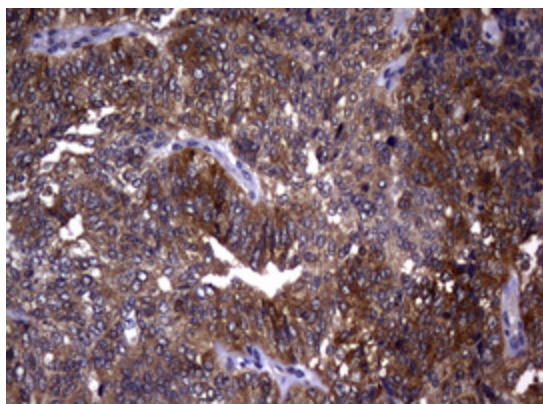
HEK293T cells were transfected with the pCMV6-ENTRY control (Left lane) or pCMV6-ENTRY RRM1 [RC200726], Right lane) cDNA for 48 hrs and lysed. Equivalent amounts of cell lysates (5 ug per lane) were separated by SDS-PAGE and immunoblotted with anti-RRM1. Positive lysates [LY422336] (100ug) and [LC422336] (20ug) can be purchased separately from OriGene.



Immunohistochemical staining of paraffin-embedded Human breast tissue within the normal limits using anti-RRM1 mouse monoclonal antibody. (Heat-induced epitope retrieval by 10mM citric buffer, pH6.0, 120°C for 3min, TA801208)



Immunohistochemical staining of paraffin-embedded Adenocarcinoma of Human ovary tissue using anti-RRM1 mouse monoclonal antibody. (Heat-induced epitope retrieval by 10mM citric buffer, pH6.0, 120°C for 3min, TA801208)



Immunohistochemical staining of paraffin-embedded Adenocarcinoma of Human endometrium tissue using anti-RRM1 mouse monoclonal antibody. (Heat-induced epitope retrieval by 10mM citric buffer, pH6.0, 120°C for 3min, TA801208)