

## Product datasheet for **TA801161M**

### NFH (NEFH) Mouse Monoclonal Antibody [Clone ID: OTI10A7]

#### Product data:

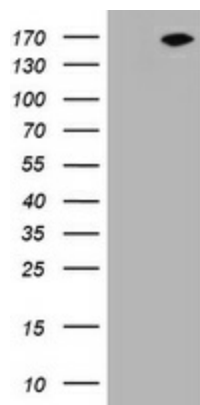
Product Type:	Primary Antibodies
Clone Name:	OTI10A7
Applications:	IHC, WB
Recommended Dilution:	WB 1:2000, IHC 1:2000
Reactivity:	Human, Rat
Host:	Mouse
Isotype:	IgG1
Clonality:	Monoclonal
Immunogen:	Human recombinant protein fragment corresponding to amino acids 778-1020 of human NEFH (NP_066554) produced in E.coli.
Formulation:	PBS (pH 7.3) containing 1% BSA, 50% glycerol and 0.02% sodium azide.
Concentration:	1 mg/ml
Purification:	Purified from mouse ascites fluids or tissue culture supernatant by affinity chromatography (protein A/G)
Conjugation:	Unconjugated
Storage:	Store at -20°C as received.
Stability:	Stable for 12 months from date of receipt.
Gene Name:	neurofilament, heavy polypeptide
Database Link:	<a href="#">NP_066554</a> <a href="#">Entrez Gene 24587 Rat</a> <a href="#">Entrez Gene 4744 Human</a> <a href="#">P12036</a>
Background:	Neurofilaments are type IV intermediate filament heteropolymers composed of light, medium, and heavy chains. Neurofilaments comprise the axoskeleton and functionally maintain neuronal caliber. They may also play a role in intracellular transport to axons and dendrites. This gene encodes the heavy neurofilament protein. This protein is commonly used as a biomarker of neuronal damage and susceptibility to amyotrophic lateral sclerosis (ALS) has been associated with mutations in this gene. [provided by RefSeq, Oct 2008]
Synonyms:	NFH


[View online »](#)

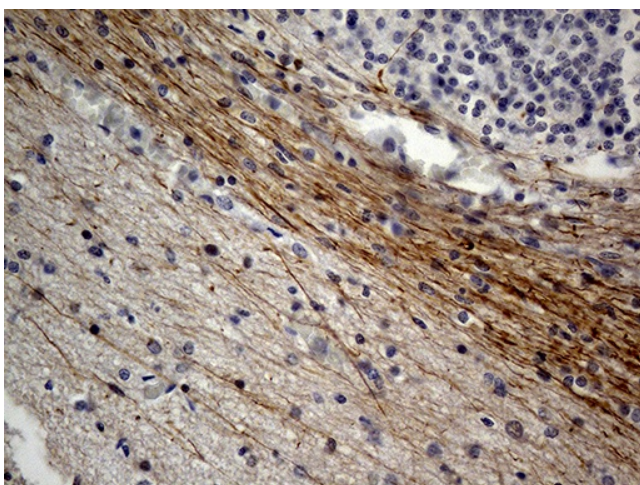
**Protein Families:** Druggable Genome

**Protein Pathways:** Amyotrophic lateral sclerosis (ALS)

**Product images:**



HEK293T cells were transfected with the pCMV6-ENTRY control (Cat# [PS100001], Left lane) or pCMV6-ENTRY NEFH (Cat# [RC213487], Right lane) cDNA for 48 hrs and lysed. Equivalent amounts of cell lysates (5 ug per lane) were separated by SDS-PAGE and immunoblotted with anti-NEFH (Cat# [TA801161]). Positive lysates [LY412101] (100ug) and [LC412101] (20ug) can be purchased separately from OriGene.



Immunohistochemical staining of paraffin-embedded Human embryonic cerebellum within the normal limits using anti-NEFH mouse monoclonal antibody. Heat-induced epitope retrieval by EDTA solution buffer pH 8.0 at 120°C for 3 min.