

Product datasheet for **TA801108AM**

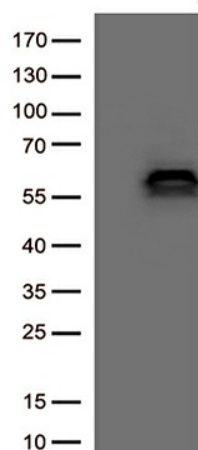
PTEN Mouse Monoclonal Antibody (Biotin conjugated) [Clone ID: OTI2H9]

Product data:

Product Type:	Primary Antibodies
Clone Name:	OTI2H9
Reactivity:	Human
Host:	Mouse
Isotype:	IgG2a
Clonality:	Monoclonal
Immunogen:	Full length human recombinant protein of human PTEN (NP_000305) produced in SF9 Cell.
Formulation:	PBS (pH 7.3) containing 1% BSA, 50% glycerol and 0.02% sodium azide.
Concentration:	0.5 mg/ml
Purification:	Purified from mouse ascites fluids or tissue culture supernatant by affinity chromatography (protein A/G)
Conjugation:	Biotin
Storage:	Store at -20°C as received.
Stability:	Stable for 12 months from date of receipt.
Predicted Protein Size:	47 kDa
Database Link:	NP_000305 Entrez Gene 5728 Human
Synonyms:	10q23del; BZS; CWS1; DEC; GLM2; MHAM; MMAC1; PTEN1; TEP1
Protein Families:	Druggable Genome, Phosphatase
Protein Pathways:	Endometrial cancer, Focal adhesion, Glioma, Inositol phosphate metabolism, Melanoma, p53 signaling pathway, Pathways in cancer, Phosphatidylinositol signaling system, Prostate cancer, Small cell lung cancer, Tight junction



[View online »](#)

Product images:

HEK293T cells were transfected with the pCMV6-ENTRY control (left lane) or pCMV6-ENTRY PTEN (Cat# [RC202627], right lane) cDNA clone for 48 hrs and lysed. Equivalent amounts of cell lysates (5 ug per lane) were separated by SDS-PAGE and immunoblotted with anti-PTEN. (1:500)