

## Product datasheet for **TA801104M**

### Cytokeratin 5 (KRT5) Mouse Monoclonal Antibody [Clone ID: OTI4H8]

#### Product data:

Product Type:	Primary Antibodies
Clone Name:	OTI4H8
Applications:	IHC, WB
Recommended Dilution:	WB 1:1000, IHC 1:150
Reactivity:	Human, Mouse, Rat
Host:	Mouse
Isotype:	IgG2b
Clonality:	Monoclonal
Immunogen:	Human recombinant protein fragment corresponding to amino acids 1-273 of human KRT5 (NP_000415) produced in E.coli.
Formulation:	PBS (pH 7.3) containing 1% BSA, 50% glycerol and 0.02% sodium azide.
Concentration:	1 mg/ml
Purification:	Purified from mouse ascites fluids or tissue culture supernatant by affinity chromatography (protein A/G)
Conjugation:	Unconjugated
Storage:	Store at -20°C as received.
Stability:	Stable for 12 months from date of receipt.
Predicted Protein Size:	62.2 kDa
Gene Name:	keratin 5
Database Link:	<a href="#">NP_000415</a> <a href="#">Entrez Gene 110308 Mouse</a> <a href="#">Entrez Gene 369017 Rat</a> <a href="#">Entrez Gene 3852 Human</a> <a href="#">P13647</a>



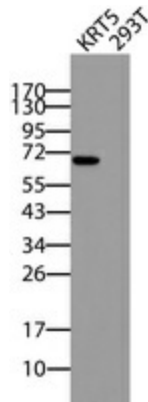
[View online »](#)

**Background:**

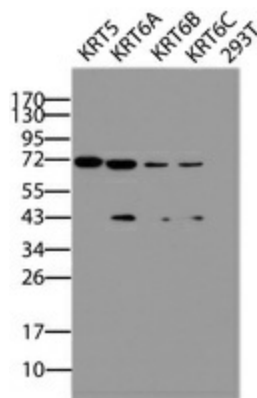
The protein encoded by this gene is a member of the keratin gene family. The type II cytokeratins consist of basic or neutral proteins which are arranged in pairs of heterotypic keratin chains coexpressed during differentiation of simple and stratified epithelial tissues. This type II cytokeratin is specifically expressed in the basal layer of the epidermis with family member KRT14. Mutations in these genes have been associated with a complex of diseases termed epidermolysis bullosa simplex. The type II cytokeratins are clustered in a region of chromosome 12q12-q13. [provided by RefSeq, Jul 2008]

**Synonyms:**

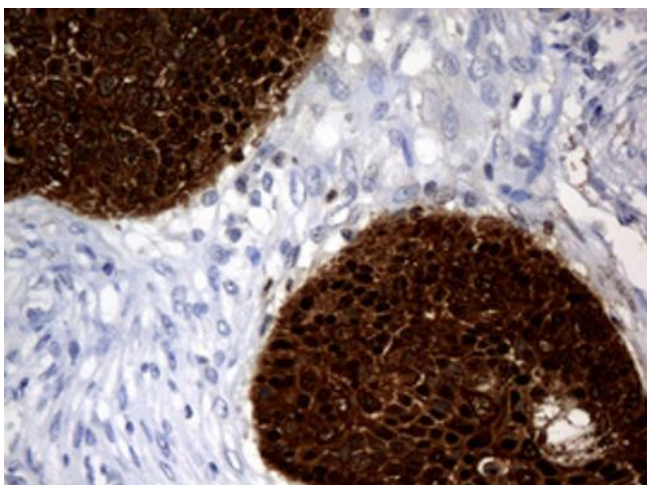
CK5; DDD; DDD1; EBS2; K5; KRT5A

**Product images:**


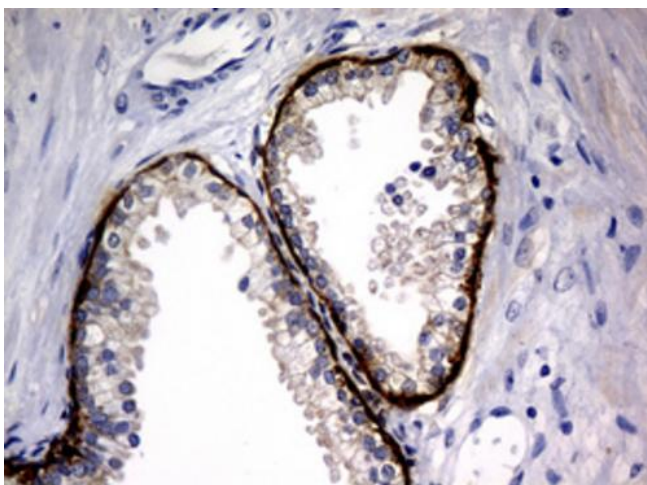
HEK293T cells were transfected with the pCMV6-ENTRY control (Right lane) or pCMV6-ENTRY KRT5 ([RC206870], left lane) cDNA for 48 hrs and lysed. Equivalent amounts of cell lysates (5 ug per lane) were separated by SDS-PAGE and immunoblotted with anti-KRT5/6.



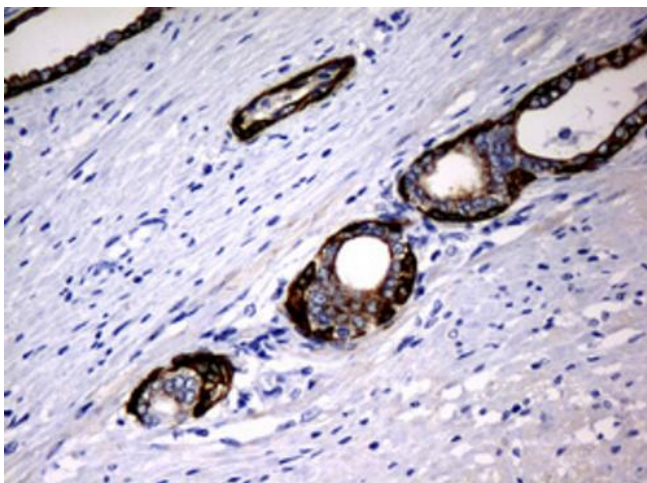
HEK293T cells were transfected with the pCMV6-ENTRY control (Lane 5) or pCMV6-ENTRY KRT5 ([RC206870], Lane 1), KRT6A ([RC204328], Lane 1), KRT6B ([RC205139], Lane 2), KRT6C ([RC218986], Lane 3) cDNA for 48 hrs and lysed. Equivalent amounts of cell lysates (5 ug per lane) were separated by SDS-PAGE and immunoblotted with anti-KRT5/6.



Immunohistochemical staining of paraffin-embedded Carcinoma of Human lung tissue using anti-KRT5 mouse monoclonal antibody. Heat-induced epitope retrieval by EDTA solution buffer pH 8.0 at 120°C for 3 min.



Immunohistochemical staining of paraffin-embedded Human prostate tissue within the normal limits using anti-KRT5 mouse monoclonal antibody. Heat-induced epitope retrieval by EDTA solution buffer pH 8.0 at 120°C for 3 min.



Immunohistochemical staining of paraffin-embedded Carcinoma of Human prostate tissue using anti-KRT5 mouse monoclonal antibody. Heat-induced epitope retrieval by EDTA solution buffer pH 8.0 at 120°C for 3 min.