

## Product datasheet for **TA801089AM**

### VEGFC Mouse Monoclonal Antibody (Biotin conjugated) [Clone ID: OTI4A1]

#### Product data:

Product Type:	Primary Antibodies
Clone Name:	OTI4A1
Applications:	IHC, WB
Recommended Dilution:	WB 1:200
Reactivity:	Human, Mouse, Rat
Host:	Mouse
Isotype:	IgG1
Clonality:	Monoclonal
Immunogen:	Human recombinant protein fragment corresponding to amino acids 112-227 of human VEGFC (NP_005420) produced in E.coli.
Formulation:	PBS (pH 7.3) containing 1% BSA, 50% glycerol and 0.02% sodium azide.
Concentration:	0.5 mg/ml
Purification:	Purified from mouse ascites fluids or tissue culture supernatant by affinity chromatography (protein A/G)
Conjugation:	Biotin
Storage:	Store at -20°C as received.
Stability:	Stable for 12 months from date of receipt.
Predicted Protein Size:	46.7 kDa
Gene Name:	vascular endothelial growth factor C
Database Link:	<a href="#">NP_005420</a> <a href="#">Entrez Gene 22341 Mouse</a> <a href="#">Entrez Gene 114111 Rat</a> <a href="#">Entrez Gene 7424 Human</a> <a href="#">P49767</a>



[View online »](#)

**Background:**

The protein encoded by this gene is a member of the platelet-derived growth factor/vascular endothelial growth factor (PDGF/VEGF) family, is active in angiogenesis and endothelial cell growth, and can also affect the permeability of blood vessels. This secreted protein undergoes a complex proteolytic maturation, generating multiple processed forms which bind and activate VEGFR-3 receptors. Only the fully processed form can bind and activate VEGFR-2 receptors. This protein is structurally and functionally similar to vascular endothelial growth factor D. [provided by RefSeq, Jul 2008]

**Synonyms:**

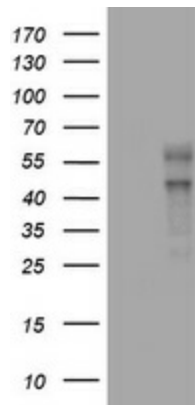
Flt4-L; LMPH1D; VRP

**Protein Families:**

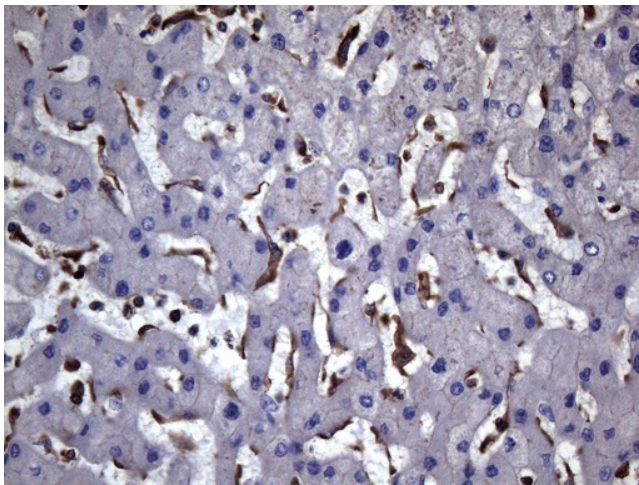
Druggable Genome, Secreted Protein

**Protein Pathways:**

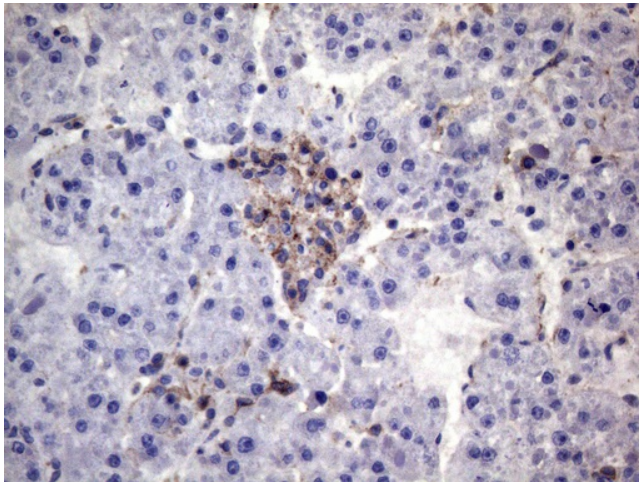
Bladder cancer, Cytokine-cytokine receptor interaction, Focal adhesion, mTOR signaling pathway, Pancreatic cancer, Pathways in cancer, Renal cell carcinoma

**Product images:**

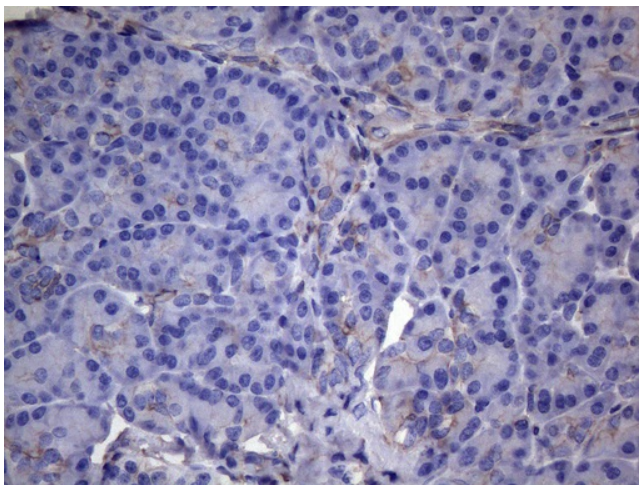
HEK293T cells were transfected with the pCMV6-ENTRY control (Cat# [PS100001], Left lane) or pCMV6-ENTRY VEGFC (Cat# [RC209451], Right lane) cDNA for 48 hrs and lysed. Equivalent amounts of cell lysates (5 ug per lane) were separated by SDS-PAGE and immunoblotted with anti-VEGFC (Cat# [TA801089]). Positive lysates [LY401667] (100ug) and [LC401667] (20ug) can be purchased separately from OriGene.



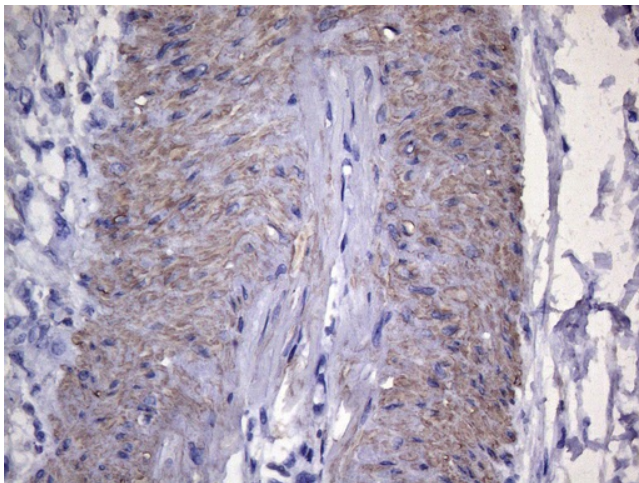
Immunohistochemical staining of paraffin-embedded Human liver tissue within the normal limits using anti-VEGFC mouse monoclonal antibody. (Heat-induced epitope retrieval by 1mM EDTA in 10mM Tris buffer (pH8.5) at 120°C for 3min, [TA801089]) (1:150)



Immunohistochemical staining of paraffin-embedded Carcinoma of Human liver tissue using anti-VEGFC mouse monoclonal antibody. (Heat-induced epitope retrieval by 1mM EDTA in 10mM Tris buffer (pH8.5) at 120°C for 3min, [TA801089]) (1:150)

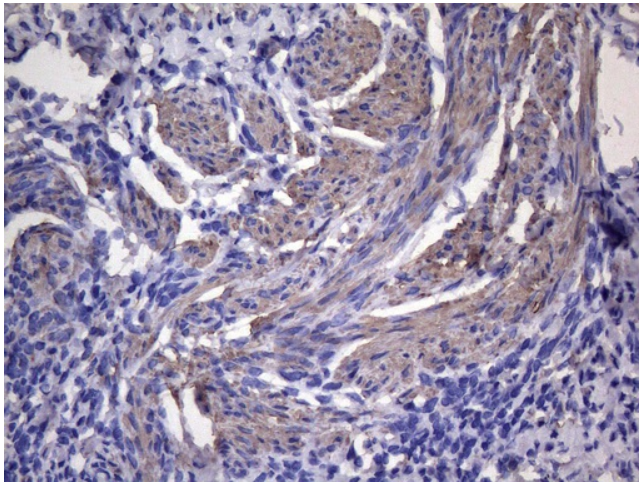


Immunohistochemical staining of paraffin-embedded Human pancreas tissue within the normal limits using anti-VEGFC mouse monoclonal antibody. (Heat-induced epitope retrieval by 1mM EDTA in 10mM Tris buffer (pH8.5) at 120°C for 3min, [TA801089]) (1:150)

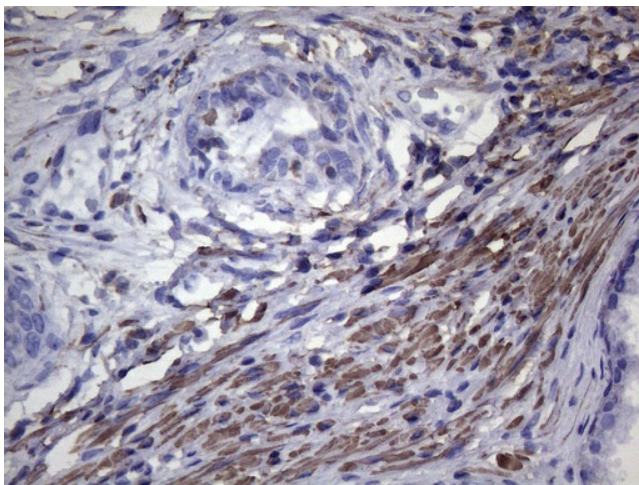


Immunohistochemical staining of paraffin-embedded Carcinoma of Human pancreas tissue using anti-VEGFC mouse monoclonal antibody. (Heat-induced epitope retrieval by 1mM EDTA in 10mM Tris buffer (pH8.5) at 120°C for 3min, [TA801089]) (1:150)

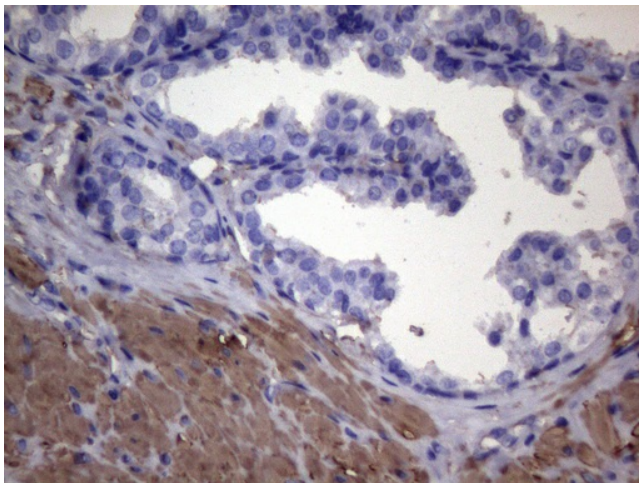




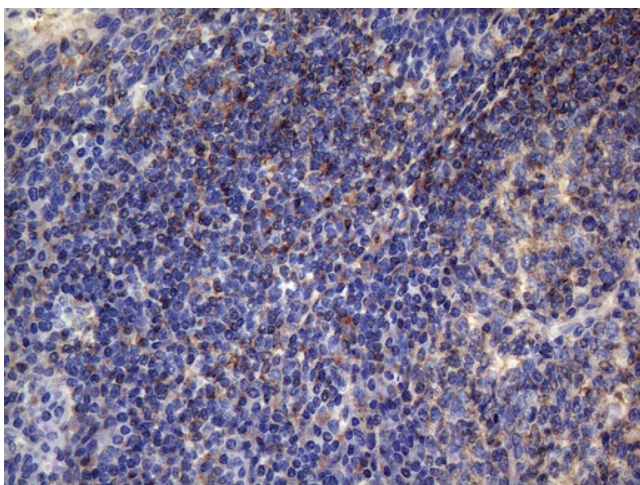
Immunohistochemical staining of paraffin-embedded Human endometrium tissue within the normal limits using anti-VEGFC mouse monoclonal antibody. (Heat-induced epitope retrieval by 1mM EDTA in 10mM Tris buffer (pH8.5) at 120°C for 3min, [TA801089]) (1:150)



Immunohistochemical staining of paraffin-embedded Human prostate tissue within the normal limits using anti-VEGFC mouse monoclonal antibody. (Heat-induced epitope retrieval by 1mM EDTA in 10mM Tris buffer (pH8.5) at 120°C for 3min, [TA801089]) (1:150)



Immunohistochemical staining of paraffin-embedded Carcinoma of Human prostate tissue using anti-VEGFC mouse monoclonal antibody. (Heat-induced epitope retrieval by 1mM EDTA in 10mM Tris buffer (pH8.5) at 120°C for 3min, [TA801089]) (1:150)



Immunohistochemical staining of paraffin-embedded Human tonsil within the normal limits using anti-VEGFC mouse monoclonal antibody. (Heat-induced epitope retrieval by 1mM EDTA in 10mM Tris buffer (pH8.5) at 120°C for 3min, [TA801089]) (1:150)