

Product datasheet for **TA801084**

HE4 (WFDC2) Mouse Monoclonal Antibody [Clone ID: OTI3A9]

Product data:

Product Type:	Primary Antibodies
Clone Name:	OTI3A9
Applications:	WB
Recommended Dilution:	WB 1:2000
Reactivity:	Human
Host:	Mouse
Isotype:	IgG1
Clonality:	Monoclonal
Immunogen:	Human recombinant protein fragment corresponding to amino acids 31-124 of human WFDC2 (NP_006094) produced in E.coli.
Formulation:	PBS (pH 7.3) containing 1% BSA, 50% glycerol and 0.02% sodium azide.
Concentration:	1 mg/ml
Purification:	Purified from mouse ascites fluids or tissue culture supernatant by affinity chromatography (protein A/G)
Conjugation:	Unconjugated
Storage:	Store at -20°C as received.
Stability:	Stable for 12 months from date of receipt.
Predicted Protein Size:	10 kDa
Gene Name:	WAP four-disulfide core domain 2
Database Link:	NP_006094 Entrez Gene 10406 Human Q14508
Background:	This gene encodes a protein that is a member of the WFDC domain family. The WFDC domain, or WAP Signature motif, contains eight cysteines forming four disulfide bonds at the core of the protein, and functions as a protease inhibitor in many family members. This gene is expressed in pulmonary epithelial cells, and was also found to be expressed in some ovarian cancers. The encoded protein is a small secretory protein, which may be involved in sperm maturation. [provided by RefSeq, Jul 2008]

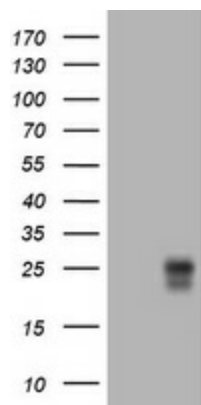


[View online »](#)

Synonyms: dj461P17.6; EDDM4; HE4; WAP5

Protein Families: Secreted Protein, Transmembrane

Product images:



HEK293T cells were transfected with the pCMV6-ENTRY control (Left lane) or pCMV6-ENTRY WFDC2 ([RC208491], Right lane) cDNA for 48 hrs and lysed. Equivalent amounts of cell lysates (5 ug per lane) were separated by SDS-PAGE and immunoblotted with anti-WFDC2. Positive lysates [LY416866] (100ug) and [LC416866] (20ug) can be purchased separately from OriGene.