

## Product datasheet for **TA801079S**

### **S100A1 Mouse Monoclonal Antibody [Clone ID: OTI9F3]**

#### **Product data:**

Product Type:	Primary Antibodies
Clone Name:	OTI9F3
Applications:	ELISA, WB
Recommended Dilution:	WB 1:2000
Reactivity:	Human, Mouse, Rat
Host:	Mouse
Isotype:	IgG1
Clonality:	Monoclonal
Immunogen:	Full length human recombinant protein of human S100A1 (NP_006262) produced in E.coli.
Formulation:	PBS (pH 7.3) containing 1% BSA, 50% glycerol and 0.02% sodium azide.
Concentration:	1 mg/ml
Purification:	Purified from mouse ascites fluids or tissue culture supernatant by affinity chromatography (protein A/G)
Conjugation:	Unconjugated
Storage:	Store at -20°C as received.
Stability:	Stable for 12 months from date of receipt.
Predicted Protein Size:	10.4 kDa
Gene Name:	S100 calcium binding protein A1
Database Link:	<a href="#">NP_006262</a> <a href="#">Entrez Gene 20193 Mouse</a> <a href="#">Entrez Gene 295214 Rat</a> <a href="#">Entrez Gene 6271 Human</a> <a href="#">P23297</a>



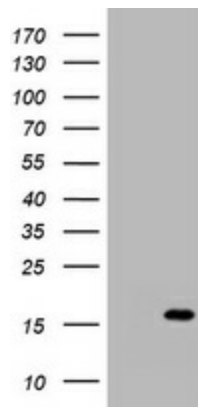
[View online »](#)

**Background:**

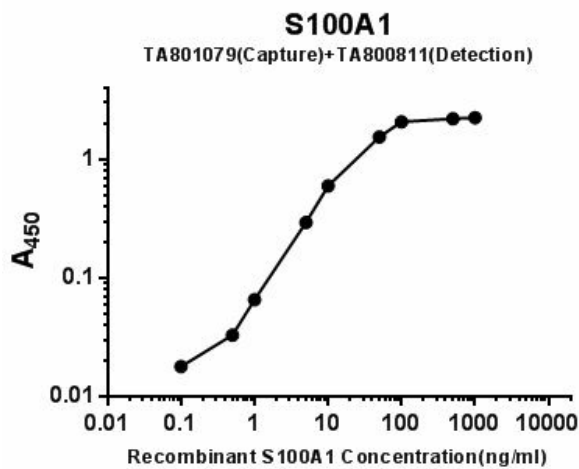
The protein encoded by this gene is a member of the S100 family of proteins containing 2 EF-hand calcium-binding motifs. S100 proteins are localized in the cytoplasm and/or nucleus of a wide range of cells, and involved in the regulation of a number of cellular processes such as cell cycle progression and differentiation. S100 genes include at least 13 members which are located as a cluster on chromosome 1q21. This protein may function in stimulation of Ca<sup>2+</sup>-induced Ca<sup>2+</sup> release, inhibition of microtubule assembly, and inhibition of protein kinase C-mediated phosphorylation. Reduced expression of this protein has been implicated in cardiomyopathies. [provided by RefSeq, Jul 2008]

**Synonyms:**

S100; S100-alpha; S100A

**Product images:**


HEK293T cells were transfected with the pCMV6-ENTRY control (Cat# [PS100001], Left lane) or pCMV6-ENTRY S100A1 (Cat# [RC200278], Right lane) cDNA for 48 hrs and lysed. Equivalent amounts of cell lysates (5 ug per lane) were separated by SDS-PAGE and immunoblotted with anti-S100A1 (Cat# [TA801079]). Positive lysates [LY401900] (100ug) and [LC401900] (20ug) can be purchased separately from OriGene.



Standard curve for ELISA analysis with S100A1 recombinant protein (dilution range from 100pg/ml to 1ug/ml) using S100A1 Capture Antibody (Cat# [TA801079]) at 5ug/ml and HRP conjugated S100A1 Detection mAb (Cat# [TA800811]) at 0.033ug/ml.