

## Product datasheet for **TA801078S**

### FGFR3 Mouse Monoclonal Antibody [Clone ID: OTI1B10]

#### Product data:

Product Type:	Primary Antibodies
Clone Name:	OTI1B10
Applications:	IF, IHC, WB
Recommended Dilution:	WB 1:2000, IHC 1:150
Reactivity:	Human, Mouse, Rat
Host:	Mouse
Isotype:	IgG1
Clonality:	Monoclonal
Immunogen:	Human recombinant protein fragment corresponding to amino acids 23-375 of human FGFR3 (NP_000133) produced in SF9 cell.
Formulation:	PBS (pH 7.3) containing 1% BSA, 50% glycerol and 0.02% sodium azide.
Concentration:	1 mg/ml
Purification:	Purified from mouse ascites fluids or tissue culture supernatant by affinity chromatography (protein A/G)
Conjugation:	Unconjugated
Storage:	Store at -20°C as received.
Stability:	Stable for 12 months from date of receipt.
Predicted Protein Size:	85.7 kDa
Gene Name:	fibroblast growth factor receptor 3
Database Link:	<a href="#">NP_000133</a> <a href="#">Entrez Gene 14184 Mouse</a> <a href="#">Entrez Gene 84489 Rat</a> <a href="#">Entrez Gene 2261 Human</a> <a href="#">P22607</a>



[View online »](#)

**Background:**

This gene encodes a member of the fibroblast growth factor receptor (FGFR) family, with its amino acid sequence being highly conserved between members and among divergent species. FGFR family members differ from one another in their ligand affinities and tissue distribution. A full-length representative protein would consist of an extracellular region, composed of three immunoglobulin-like domains, a single hydrophobic membrane-spanning segment and a cytoplasmic tyrosine kinase domain. The extracellular portion of the protein interacts with fibroblast growth factors, setting in motion a cascade of downstream signals, ultimately influencing mitogenesis and differentiation. This particular family member binds acidic and basic fibroblast growth hormone and plays a role in bone development and maintenance. Mutations in this gene lead to craniosynostosis and multiple types of skeletal dysplasia. Three alternatively spliced transcript variants that encode different protein isoforms have been described. [provided by RefSeq, Jul 2009]

**Synonyms:**

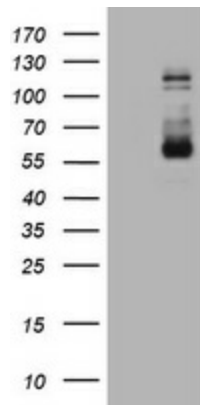
ACH; CD333; CEK2; HSGFR3EX; JTK4

**Protein Families:**

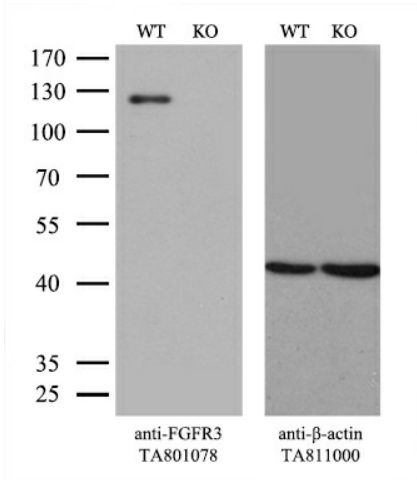
Druggable Genome, Protein Kinase, Transmembrane

**Protein Pathways:**

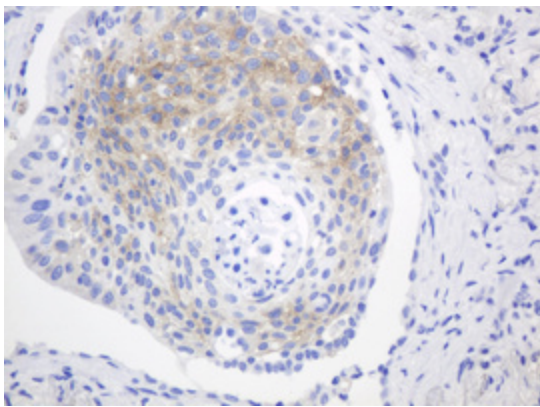
Bladder cancer, Endocytosis, MAPK signaling pathway, Pathways in cancer, Regulation of actin cytoskeleton

**Product images:**

HEK293T cells were transfected with the pCMV6-ENTRY control (Cat# [PS100001], Left lane) or pCMV6-ENTRY FGFR3 (Cat# [RC215533], Right lane) cDNA for 48 hrs and lysed. Equivalent amounts of cell lysates (5 ug per lane) were separated by SDS-PAGE and immunoblotted with anti-FGFR3 (Cat# [TA801078]). Positive lysates [LY424902] (100ug) and [LC424902] (20ug) can be purchased separately from OriGene.



Equivalent amounts of cell lysates (10 ug per lane) of wild-type 293T cells (WT, Cat# LC810293T) and FGFR3-Knockout 293T cells (KO, Cat# [LC810079]) were separated by SDS-PAGE and immunoblotted with anti-FGFR3 monoclonal antibody [TA801078]. Then the blotted membrane was stripped and reprobed with anti-β-actin antibody ([TA811000]) as a loading control (1:500).



Immunohistochemical staining of paraffin-embedded Carcinoma of Human lung tissue using anti-FGFR3 mouse monoclonal antibody. (Heat-induced epitope retrieval by 10mM citric buffer, pH6.0, 120°C for 3min, [TA801078])

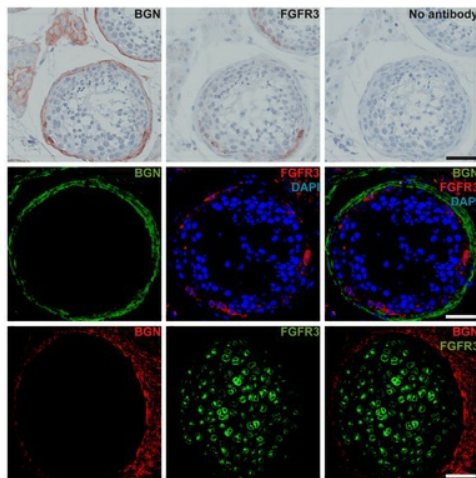


Figure from citation: Immunohistochemical and Immunofluorescence staining with anti-BGN and anti-FGFR3 of serial sections of adult human testis tissue with full spermatogenesis and fetal bone sample (gestational week 10). Scale bar is 50 um for all images. Dilution: 1:200 [View Citation](#)