

## Product datasheet for **TA801070BM**

### Estrogen Receptor beta (ESR2) Mouse Monoclonal Antibody (HRP conjugated) [Clone ID: OTI3E4]

#### Product data:

Product Type:	Primary Antibodies
Clone Name:	OTI3E4
Applications:	WB
Recommended Dilution:	WB 1:2000
Reactivity:	Human, Mouse, Rat
Host:	Mouse
Isotype:	IgG2b
Clonality:	Monoclonal
Immunogen:	Human recombinant protein fragment corresponding to amino acids 1-260 of human ESR2 (NP_001428) produced in E.coli.
Formulation:	PBS (pH 7.3) containing 1% BSA, 50% glycerol.
Concentration:	0.5 mg/ml
Purification:	Purified from mouse ascites fluids or tissue culture supernatant by affinity chromatography (protein A/G)
Conjugation:	HRP
Storage:	Store at -20°C as received.
Stability:	Stable for 12 months from date of receipt.
Gene Name:	estrogen receptor 2
Database Link:	<a href="#">NP_001428</a> <a href="#">Entrez Gene 13983 Mouse</a> <a href="#">Entrez Gene 25149 Rat</a> <a href="#">Entrez Gene 2100 Human</a> <a href="#">Q92731</a>



[View online »](#)

**Background:**

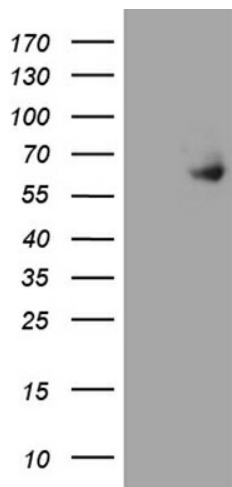
This gene encodes a member of the family of estrogen receptors and superfamily of nuclear receptor transcription factors. The gene product contains an N-terminal DNA binding domain and C-terminal ligand binding domain and is localized to the nucleus, cytoplasm, and mitochondria. Upon binding to 17beta-estradiol or related ligands, the encoded protein forms homo- or hetero-dimers that interact with specific DNA sequences to activate transcription. Some isoforms dominantly inhibit the activity of other estrogen receptor family members. Several alternatively spliced transcript variants of this gene have been described, but the full-length nature of some of these variants has not been fully characterized. [provided by RefSeq, Jul 2008]

**Synonyms:**

ER-BETA; Erb; ESR-BETA; ESRB; ESTRB; NR3A2

**Protein Families:**

Druggable Genome, Nuclear Hormone Receptor, Transcription Factors

**Product images:**

HEK293T cells were transfected with the pCMV6-ENTRY control (Left lane) or pCMV6-ENTRY ESR2 ([RC218519], Right lane) cDNA for 48 hrs and lysed. Equivalent amounts of cell lysates (5 ug per lane) were separated by SDS-PAGE and immunoblotted with anti-ESR2 (1:2000). Positive lysates [LY400556] (100ug) and [LC400556] (20ug) can be purchased separately from OriGene.