

Product datasheet for **TA801049AM**

P Glycoprotein (ABCB1) Mouse Monoclonal Antibody (Biotin conjugated) [Clone ID: OTI1A3]

Product data:

Product Type:	Primary Antibodies
Clone Name:	OTI1A3
Applications:	WB
Recommended Dilution:	WB 1:1000
Reactivity:	Human, Mouse, Rat
Host:	Mouse
Isotype:	IgG1
Clonality:	Monoclonal
Immunogen:	Human recombinant protein fragment corresponding to amino acids 995-1280 of human ABCB1 (NP_000918) produced in SF9 cell.
Formulation:	PBS (pH 7.3) containing 1% BSA, 50% glycerol and 0.02% sodium azide.
Concentration:	0.5 mg/ml
Purification:	Purified from mouse ascites fluids or tissue culture supernatant by affinity chromatography (protein A/G)
Conjugation:	Biotin
Storage:	Store at -20°C as received.
Stability:	Stable for 12 months from date of receipt.
Gene Name:	ATP binding cassette subfamily B member 1
Database Link:	NP_000918 Entrez Gene 170913 Rat Entrez Gene 5243 Human P08183



[View online »](#)

Background:

The membrane-associated protein encoded by this gene is a member of the superfamily of ATP-binding cassette (ABC) transporters. ABC proteins transport various molecules across extra- and intra-cellular membranes. ABC genes are divided into seven distinct subfamilies (ABC1, MDR/TAP, MRP, ALD, OABP, GCN20, White). This protein is a member of the MDR/TAP subfamily. Members of the MDR/TAP subfamily are involved in multidrug resistance. The protein encoded by this gene is an ATP-dependent drug efflux pump for xenobiotic compounds with broad substrate specificity. It is responsible for decreased drug accumulation in multidrug-resistant cells and often mediates the development of resistance to anticancer drugs. This protein also functions as a transporter in the blood-brain barrier. [provided by RefSeq, Jul 2008]

Synonyms:

ABC20; CD243; CLCS; GP170; MDR1; p-170; P-GP; PGY1

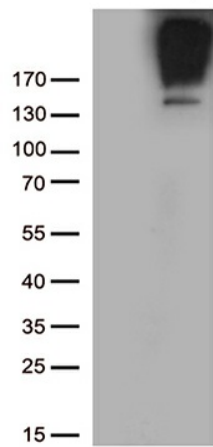
Protein Families:

Druggable Genome, ES Cell Differentiation/IPS, Transmembrane

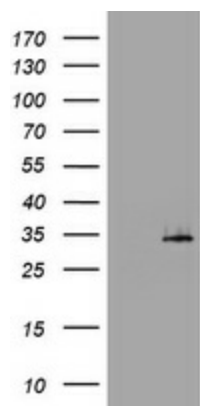
Protein Pathways:

ABC transporters

Product images:



HEK293T cells were transfected with the pCMV6-ENTRY control (Left lane) or pCMV6-ENTRY ABCB1 ([RC216080], Right lane) cDNA for 48 hrs and lysed. Equivalent amounts of cell lysates (5 ug per lane) were separated by SDS-PAGE and immunoblotted with anti-ABCB1 (1:500).



SF9 cells lysate (5 ug, left lane) and SF9 cells lysate expressing human recombinant protein fragment (5 ug, right lane) corresponding to amino acids 995-1280 of human ABCB1 (NP_000918) were separated by SDS-PAGE and immunoblotted with anti-ABCB1.