

## Product datasheet for **TA801043M**

### CD117 Mouse Monoclonal Antibody [Clone ID: OTI2C1D5]

#### Product data:

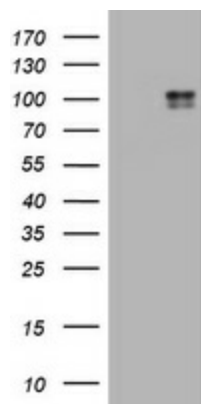
|                       |  |
|-----------------------|--|
| Product Type:         | Primary Antibodies   |
| Clone Name:           | OTI2C1D5   |
| Applications:         | IHC, WB  |
| Recommended Dilution: | WB 1:2000, IHC 1:150   |
| Reactivity:           | Human  |
| Host:                 | Mouse  |
| Isotype:              | IgG1   |
| Clonality:            | Monoclonal   |
| Immunogen:            | Human recombinant protein fragment corresponding to amino acids 546-976 of human KIT (NP_000213) produced in SF9 cell.   |
| Formulation:          | PBS (pH 7.3) containing 1% BSA, 50% glycerol and 0.02% sodium azide.   |
| Concentration:        | 1 mg/ml  |
| Purification:         | Purified from mouse ascites fluids or tissue culture supernatant by affinity chromatography (protein A/G)  |
| Conjugation:          | Unconjugated   |
| Storage:              | Store at -20°C as received.  |
| Stability:            | Stable for 12 months from date of receipt.   |
| Gene Name:            | KIT proto-oncogene receptor tyrosine kinase  |
| Database Link:        | <a href="#">NP_000213</a><br><a href="#">Entrez Gene 3815 Human</a><br><a href="#">P10721</a>  |
| Background:           | This gene encodes the human homolog of the proto-oncogene c-kit. C-kit was first identified as the cellular homolog of the feline sarcoma viral oncogene v-kit. This protein is a type 3 transmembrane receptor for MGF (mast cell growth factor, also known as stem cell factor). Mutations in this gene are associated with gastrointestinal stromal tumors, mast cell disease, acute myelogenous leukemia, and piebaldism. Multiple transcript variants encoding different isoforms have been found for this gene. [provided by RefSeq, Jul 2008] |
| Synonyms:             | C-Kit; CD117; PBT; SCFR  |

[View online »](#)

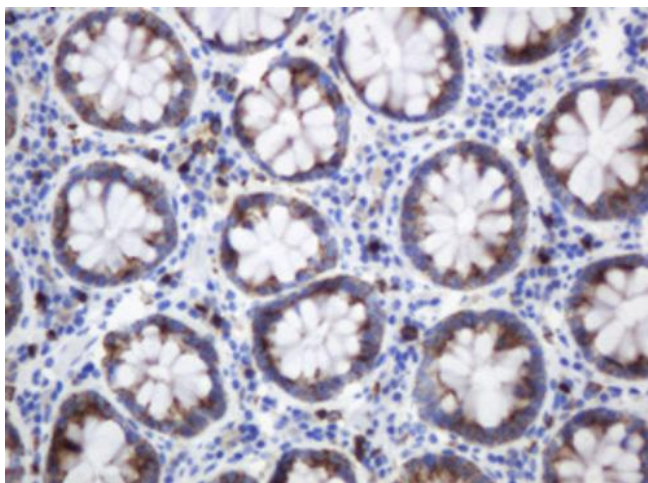
**Protein Families:** Adult stem cells, Druggable Genome, Embryonic stem cells, ES Cell Differentiation/IPS, Protein Kinase, Stem cell - Pluripotency, Transmembrane

**Protein Pathways:** Acute myeloid leukemia, Cytokine-cytokine receptor interaction, Endocytosis, Hematopoietic cell lineage, Melanogenesis, Pathways in cancer

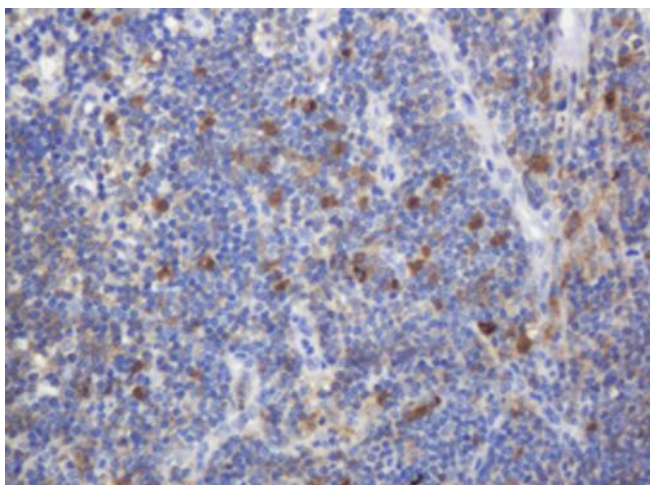
### Product images:



HEK293T cells were transfected with the pCMV6-ENTRY control (Left lane) or pCMV6-ENTRY KIT ([RC209839], Right lane) cDNA for 48 hrs and lysed. Equivalent amounts of cell lysates (5 ug per lane) were separated by SDS-PAGE and immunoblotted with anti-KIT. Positive lysates [LY424857] (100ug) and [LC424857] (20ug) can be purchased separately from OriGene.



Immunohistochemical staining of paraffin-embedded Human colon tissue within the normal limits using anti-KIT mouse monoclonal antibody. Heat-induced epitope retrieval by EDTA solution buffer pH 8.0 at 120°C for 3 min.



Immunohistochemical staining of paraffin-embedded Human lymph node tissue within the normal limits using anti-KIT mouse monoclonal antibody. Heat-induced epitope retrieval by EDTA solution buffer pH 8.0 at 120°C for 3 min.