

Product datasheet for **TA800979AM**

Thymidine Phosphorylase (TYMP) Mouse Monoclonal Antibody (Biotin conjugated) [Clone ID: OTI1H7]

Product data:

Product Type:	Primary Antibodies
Clone Name:	OTI1H7
Applications:	IHC, WB
Recommended Dilution:	WB 1:2000, IHC 1:150
Reactivity:	Human
Host:	Mouse
Isotype:	IgG1
Clonality:	Monoclonal
Immunogen:	Human recombinant protein fragment corresponding to amino acids 311-482 of human TYMP (NP_001944) produced in E.coli.
Formulation:	PBS (pH 7.3) containing 1% BSA, 50% glycerol and 0.02% sodium azide.
Concentration:	0.5 mg/ml
Purification:	Purified from mouse ascites fluids or tissue culture supernatant by affinity chromatography (protein A/G)
Conjugation:	Biotin
Storage:	Store at -20°C as received.
Stability:	Stable for 12 months from date of receipt.
Predicted Protein Size:	49.8 kDa
Gene Name:	thymidine phosphorylase
Database Link:	NP_001944 Entrez Gene 1890 Human P19971
Background:	This gene encodes an angiogenic factor which promotes angiogenesis in vivo and stimulates the in vitro growth of a variety of endothelial cells. It has a highly restricted target cell specificity acting only on endothelial cells. Mutations in this gene have been associated with mitochondrial neurogastrointestinal encephalomyopathy. Multiple alternatively spliced transcript variants have been identified. [provided by RefSeq, Apr 2012]



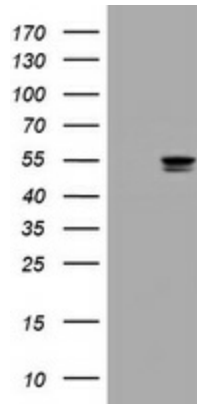
[View online »](#)

Synonyms: ECGF; ECGF1; hPD-ECGF; MEDPS1; MNGIE; MTDPS1; PDECGF; TP

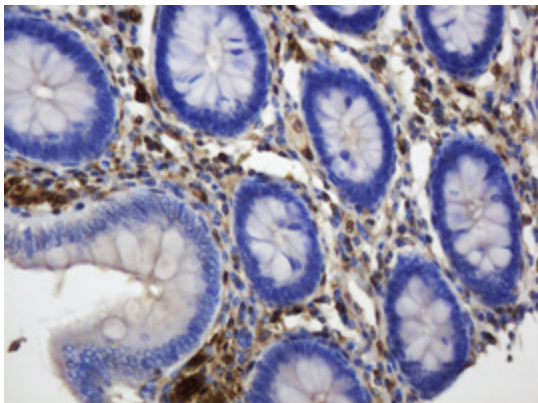
Protein Families: Druggable Genome

Protein Pathways: Bladder cancer, Drug metabolism - other enzymes, Metabolic pathways, Pyrimidine metabolism

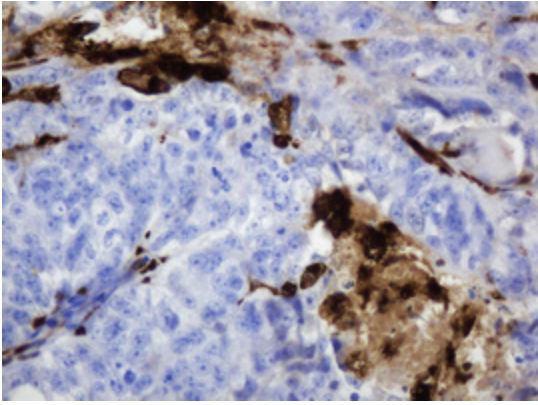
Product images:



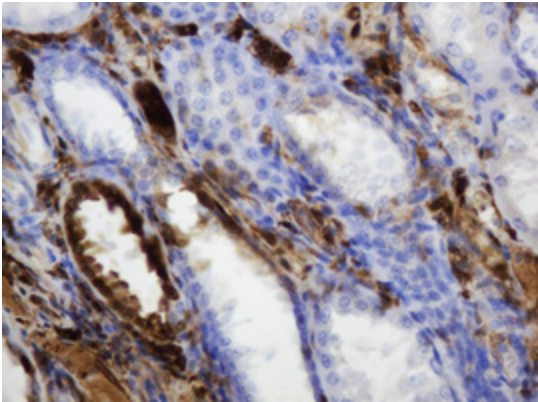
HEK293T cells were transfected with the pCMV6-ENTRY control (Left lane) or pCMV6-ENTRY TYMP ([RC202170], Right lane) cDNA for 48 hrs and lysed. Equivalent amounts of cell lysates (5 ug per lane) were separated by SDS-PAGE and immunoblotted with anti-TYMP. Positive lysates [LY419632] (100ug) and [LC419632] (20ug) can be purchased separately from OriGene.



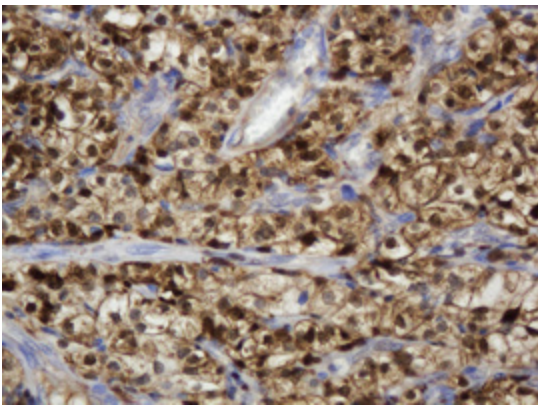
Immunohistochemical staining of paraffin-embedded Human colon tissue within the normal limits using anti-TYMP mouse monoclonal antibody. (Heat-induced epitope retrieval by 10mM citric buffer, pH6.0, 120°C for 3min, [TA800979])



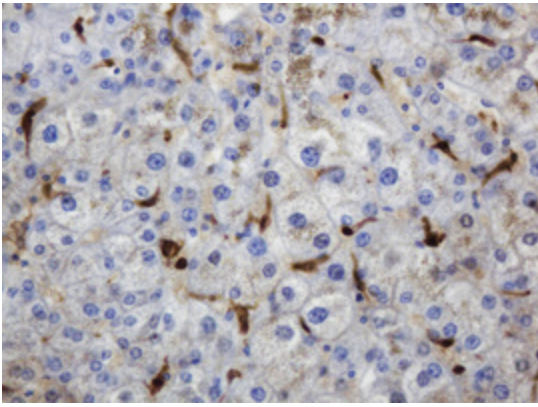
Immunohistochemical staining of paraffin-embedded Adenocarcinoma of Human colon tissue using anti-TYMP mouse monoclonal antibody. (Heat-induced epitope retrieval by 10mM citric buffer, pH6.0, 120°C for 3min, [TA800979])



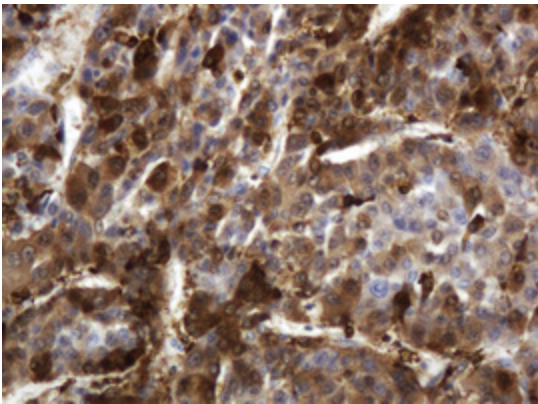
Immunohistochemical staining of paraffin-embedded Human Kidney tissue within the normal limits using anti-TYMP mouse monoclonal antibody. (Heat-induced epitope retrieval by 10mM citric buffer, pH6.0, 120°C for 3min, [TA800979])



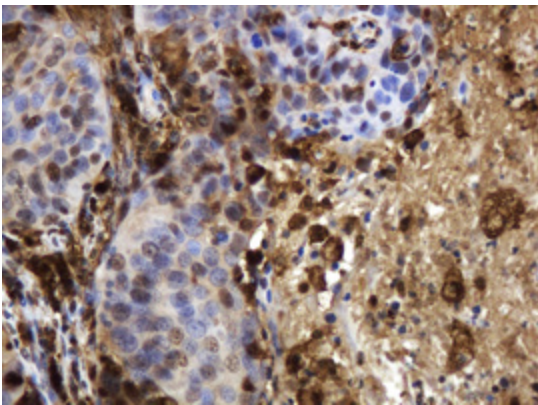
Immunohistochemical staining of paraffin-embedded Carcinoma of Human kidney tissue using anti-TYMP mouse monoclonal antibody. (Heat-induced epitope retrieval by 10mM citric buffer, pH6.0, 120°C for 3min, [TA800979])



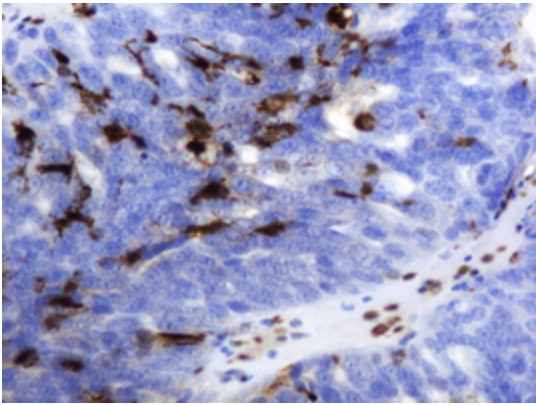
Immunohistochemical staining of paraffin-embedded Human liver tissue within the normal limits using anti-TYMP mouse monoclonal antibody. (Heat-induced epitope retrieval by 10mM citric buffer, pH6.0, 120°C for 3min, [TA800979])



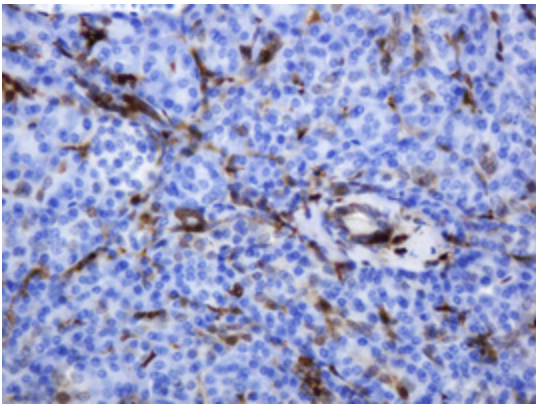
Immunohistochemical staining of paraffin-embedded Carcinoma of Human liver tissue using anti-TYMP mouse monoclonal antibody. (Heat-induced epitope retrieval by 10mM citric buffer, pH6.0, 120°C for 3min, [TA800979])



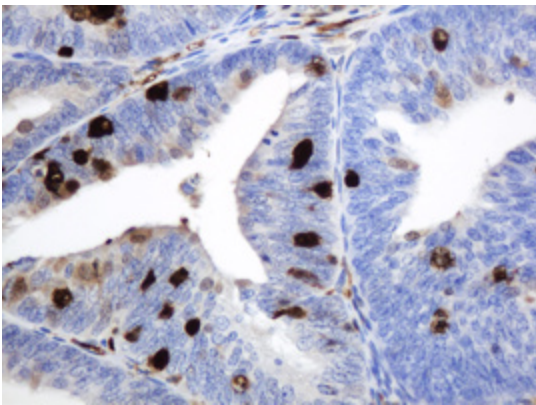
Immunohistochemical staining of paraffin-embedded Carcinoma of Human lung tissue using anti-TYMP mouse monoclonal antibody. (Heat-induced epitope retrieval by 10mM citric buffer, pH6.0, 120°C for 3min, [TA800979])



Immunohistochemical staining of paraffin-embedded Adenocarcinoma of Human ovary tissue using anti-TYMP mouse monoclonal antibody. (Heat-induced epitope retrieval by 10mM citric buffer, pH6.0, 120°C for 3min, [TA800979])



Immunohistochemical staining of paraffin-embedded Human pancreas tissue within the normal limits using anti-TYMP mouse monoclonal antibody. (Heat-induced epitope retrieval by 10mM citric buffer, pH6.0, 120°C for 3min, [TA800979])



Immunohistochemical staining of paraffin-embedded Adenocarcinoma of Human endometrium tissue using anti-TYMP mouse monoclonal antibody. (Heat-induced epitope retrieval by 10mM citric buffer, pH6.0, 120°C for 3min, [TA800979])