

Product datasheet for **TA800912BM**

Parathyroid Hormone (PTH) Mouse Monoclonal Antibody (HRP conjugated) [Clone ID: OTI1B10]

Product data:

Product Type:	Primary Antibodies
Clone Name:	OTI1B10
Applications:	WB
Recommended Dilution:	WB 1:500
Reactivity:	Human
Host:	Mouse
Isotype:	IgG2b
Clonality:	Monoclonal
Immunogen:	Human recombinant protein fragment corresponding to amino acids 32-115 of human PTH (NP_000306) produced in E.coli.
Formulation:	PBS (pH 7.3) containing 1% BSA, 50% glycerol.
Concentration:	0.5 mg/ml
Purification:	Purified from mouse ascites fluids or tissue culture supernatant by affinity chromatography (protein A/G)
Conjugation:	HRP
Storage:	Store at -20°C as received.
Stability:	Stable for 12 months from date of receipt.
Predicted Protein Size:	9.4 kDa
Gene Name:	parathyroid hormone
Database Link:	NP_000306 Entrez Gene 5741 Human P01270
Background:	The protein encoded by this gene is a hormone secreted by parathyroid cells. This hormone elevates blood Ca ²⁺ level by dissolving the salts in bone and preventing their renal excretion. Defects in this gene are a cause of familial isolated hypoparathyroidism (FIH). [provided by RefSeq, Jul 2008]

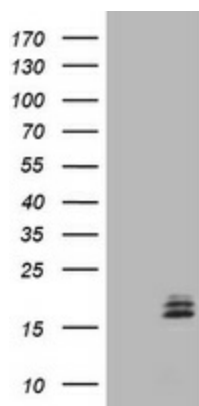


[View online »](#)

Synonyms: PTH1

Protein Families: Druggable Genome, Secreted Protein

Product images:



HEK293T cells were transfected with the pCMV6-ENTRY control (Left lane) or pCMV6-ENTRY PTH ([RC219848], Right lane) cDNA for 48 hrs and lysed. Equivalent amounts of cell lysates (5 ug per lane) were separated by SDS-PAGE and immunoblotted with anti-PTH. Positive lysates [LY424804] (100ug) and [LC424804] (20ug) can be purchased separately from OriGene.