

## Product datasheet for **TA800906**

### CTNND1 Mouse Monoclonal Antibody [Clone ID: OTI5F3]

#### Product data:

Product Type:	Primary Antibodies
Clone Name:	OTI5F3
Applications:	WB
Recommended Dilution:	WB 1:2000
Reactivity:	Human, Mouse, Rat
Host:	Mouse
Isotype:	IgG2b
Clonality:	Monoclonal
Immunogen:	Full length human recombinant protein of human CTNND1 (NP_001078927) produced in HEK293T cell.
Formulation:	PBS (pH 7.3) containing 1% BSA, 50% glycerol and 0.02% sodium azide.
Concentration:	1 mg/ml
Purification:	Purified from mouse ascites fluids or tissue culture supernatant by affinity chromatography (protein A/G)
Conjugation:	Unconjugated
Storage:	Store at -20°C as received.
Stability:	Stable for 12 months from date of receipt.
Predicted Protein Size:	108 kDa
Gene Name:	catenin delta 1
Database Link:	<a href="#">NP_001078927</a> <a href="#">Entrez Gene 12388 Mouse</a> <a href="#">Entrez Gene 311163 Rat</a> <a href="#">Entrez Gene 1500 Human</a> <a href="#">O60716</a>
Background:	This gene encodes a member of the Armadillo protein family, which function in adhesion between cells and signal transduction. Multiple translation initiation codons and alternative splicing result in many different isoforms being translated. Not all of the full-length nature of the described transcript variants have been determined. Read-through transcription also exists between this gene and the neighboring upstream thioredoxin-related transmembrane protein 2 (TMX2) gene. [provided by RefSeq, Dec 2010]



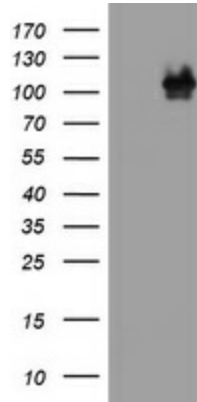
[View online »](#)

**Synonyms:** CAS; CTNND; p120; p120(CAS); p120(CTN); P120CAS; P120CTN

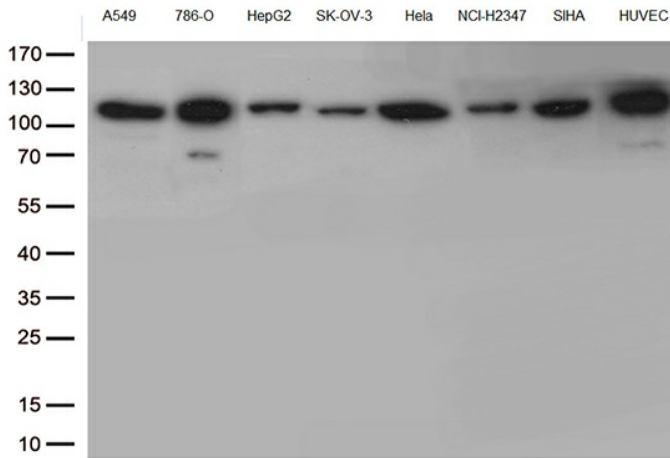
**Protein Families:** Druggable Genome

**Protein Pathways:** Adherens junction, Leukocyte transendothelial migration

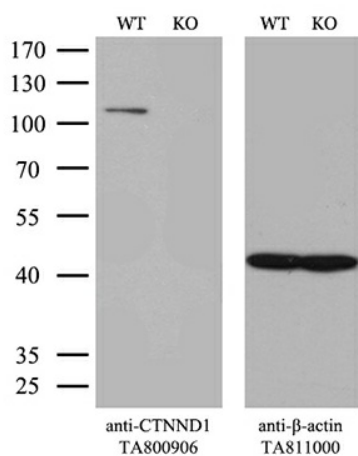
**Product images:**



HEK293T cells were transfected with the pCMV6-ENTRY control (Left lane) or pCMV6-ENTRY CTNND1 ([RC222771], Right lane) cDNA for 48 hrs and lysed. Equivalent amounts of cell lysates (5 ug per lane) were separated by SDS-PAGE and immunoblotted with anti-CTNND1. Positive lysates [LY421307] (100ug) and [LC421307] (20ug) can be purchased separately from OriGene.



Western blot analysis of extracts (35ug) from different cell line by using anti-CTNND1 monoclonal antibody (1:500).



Equivalent amounts of cell lysates (10 ug per lane) of wild-type HeLa cells (WT, Cat# LC810HELA) and CTNND1-Knockout HeLa cells (KO, Cat# [LC810057]) were separated by SDS-PAGE and immunoblotted with anti-CTNND1 monoclonal antibody TA800906. Then the blotted membrane was stripped and reprobed with anti-β-actin antibody ([TA811000]) as a loading control (1:500).