

Product datasheet for **TA800857M**

SATB2 Mouse Monoclonal Antibody [Clone ID: OTI5A1]

Product data:

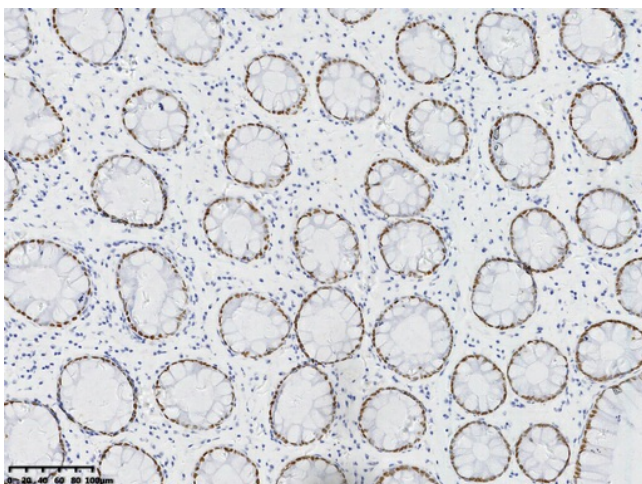
Product Type:	Primary Antibodies
Clone Name:	OTI5A1
Applications:	IHC
Recommended Dilution:	IHC 1:100
Reactivity:	Human
Host:	Mouse
Isotype:	IgG1
Clonality:	Monoclonal
Immunogen:	Human recombinant protein fragment of human SATB2 (NP_056080) produced in E.coli.
Formulation:	PBS (pH 7.3) containing 1% BSA, 50% glycerol and 0.02% sodium azide.
Concentration:	1.00mg/ml
Purification:	Purified from mouse ascites fluids or tissue culture supernatant by affinity chromatography (protein A/G)
Conjugation:	Unconjugated
Storage:	Shipped at -20°C or with ice packs, Upon delivery store at -20°C. Dilute in PBS(pH7.3) if necessary. Stable for 12 months from date of receipt. Avoid repeated freeze-thaws.
Stability:	Stable for 12 months from date of receipt.
Predicted Protein Size:	82.4 kDa
Gene Name:	SATB homeobox 2
Database Link:	NP_056080 Entrez Gene 23314 Human Q9UPW6
Background:	This gene encodes a DNA binding protein that specifically binds nuclear matrix attachment regions. The encoded protein is involved in transcription regulation and chromatin remodeling. Defects in this gene are associated with isolated cleft palate and mental retardation. Alternate splicing results in multiple transcript variants that encode the same protein. [provided by RefSeq, Feb 2010].

[View online »](#)

Synonyms: GLSS

Protein Families: Transcription Factors

Product images:



IHC staining of FFPE human colon tissue with in the normal limits using anti-SATB2 mouse monoclonal antibody ([TA800857]) and Polink-2 HRP polymer detection kit ([D22-110]). Heat-induced epitope retrieval by EDTA solution buffer pH 8.0 ([B04C-100]) at 120°C for 3 min. The brown stain indicates positive stain, blue is the counter stain.



IHC staining of FFPE human appendix tissue with in the normal limits using anti-SATB2 mouse monoclonal antibody ([TA800857]) and Polink-2 HRP polymer detection kit ([D22-110]). Heat-induced epitope retrieval by EDTA solution buffer pH 8.0 ([B04C-100]) at 120°C for 3 min. The brown stain indicates positive stain, blue is the counter stain.