

Product datasheet for **TA800853M**

MAGEA3 Mouse Monoclonal Antibody [Clone ID: OTI2B1]

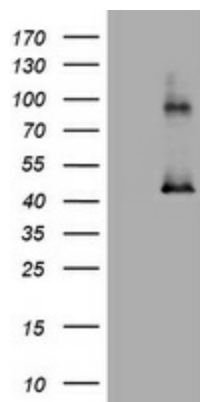
Product data:

Product Type:	Primary Antibodies
Clone Name:	OTI2B1
Applications:	WB
Recommended Dilution:	WB 1:200 - 1:1000
Reactivity:	Human
Host:	Mouse
Isotype:	IgG2a
Clonality:	Monoclonal
Immunogen:	Full length human recombinant protein of human MAGEA3 (NP_005353) produced in HEK293T cell.
Formulation:	PBS (pH 7.3) containing 1% BSA, 50% glycerol and 0.02% sodium azide.
Concentration:	1 mg/ml
Purification:	Purified from mouse ascites fluids or tissue culture supernatant by affinity chromatography (protein A/G)
Conjugation:	Unconjugated
Storage:	Store at -20°C as received.
Stability:	Stable for 12 months from date of receipt.
Predicted Protein Size:	34.6 kDa
Gene Name:	MAGE family member A3
Database Link:	NP_005353 Entrez Gene 4102 Human P43357
Background:	This gene is a member of the MAGEA gene family. The members of this family encode proteins with 50 to 80% sequence identity to each other. The promoters and first exons of the MAGEA genes show considerable variability, suggesting that the existence of this gene family enables the same function to be expressed under different transcriptional controls. The MAGEA genes are clustered at chromosomal location Xq28. They have been implicated in some hereditary disorders, such as dyskeratosis congenita. [provided by RefSeq, Jul 2008]

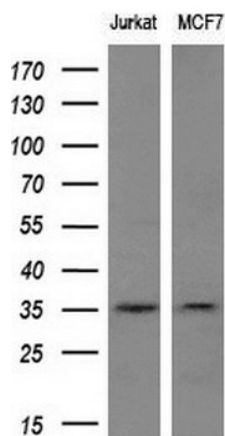

[View online »](#)

Synonyms: CT1.3; HIP8; HYPD; MAGE3; MAGEA6

Product images:



HEK293T cells were transfected with the pCMV6-ENTRY control (Left lane) or pCMV6-ENTRY MAGEA3 ([RC203288], Right lane) cDNA for 48 hrs and lysed. Equivalent amounts of cell lysates (5 ug per lane) were separated by SDS-PAGE and immunoblotted with anti-MAGEA3. Positive lysates [LY417358] (100ug) and [LC417358] (20ug) can be purchased separately from OriGene.



Western blot analysis of extracts (10ug) from 2 different cell lines by using anti-MAGEA3 monoclonal antibody at 1:200.