

Product datasheet for **TA800847BM**

Hsp60 (HSPD1) Mouse Monoclonal Antibody (HRP conjugated) [Clone ID: OTI3G10]

Product data:

Product Type:	Primary Antibodies
Clone Name:	OTI3G10
Applications:	IHC, WB
Recommended Dilution:	WB 1:2000, IHC 1:50~150
Reactivity:	Human, Mouse, Rat
Host:	Mouse
Isotype:	IgG1
Clonality:	Monoclonal
Immunogen:	Full length human recombinant protein of human HSPD1 (NP_955472) produced in E.coli.
Formulation:	PBS (pH 7.3) containing 1% BSA, 50% glycerol.
Concentration:	0.5 mg/ml
Purification:	Purified from mouse ascites fluids or tissue culture supernatant by affinity chromatography (protein A/G)
Conjugation:	HRP
Storage:	Store at -20°C as received.
Stability:	Stable for 12 months from date of receipt.
Predicted Protein Size:	60.9 kDa
Gene Name:	heat shock protein family D (Hsp60) member 1
Database Link:	NP_955472 Entrez Gene 15510 Mouse Entrez Gene 63868 Rat Entrez Gene 3329 Human P10809



[View online »](#)

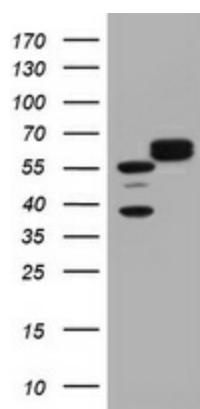
Background: This gene encodes a member of the chaperonin family. The encoded mitochondrial protein may function as a signaling molecule in the innate immune system. This protein is essential for the folding and assembly of newly imported proteins in the mitochondria. This gene is adjacent to a related family member and the region between the 2 genes functions as a bidirectional promoter. Several pseudogenes have been associated with this gene. Two transcript variants encoding the same protein have been identified for this gene. Mutations associated with this gene cause autosomal recessive spastic paraplegia 13. [provided by RefSeq, Jun

Synonyms: CPN60; GROEL; HLD4; HSP-60; HSP60; HSP65; HuCHA60; SPG13

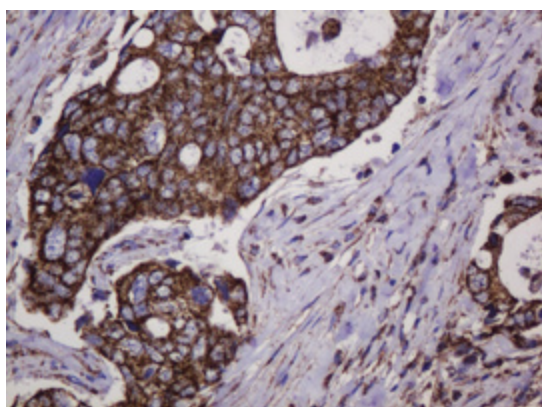
Protein Families: Druggable Genome, Stem cell - Pluripotency

Protein Pathways: RNA degradation, Type I diabetes mellitus

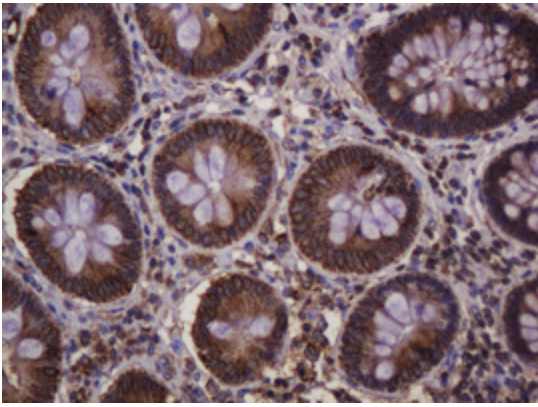
Product images:



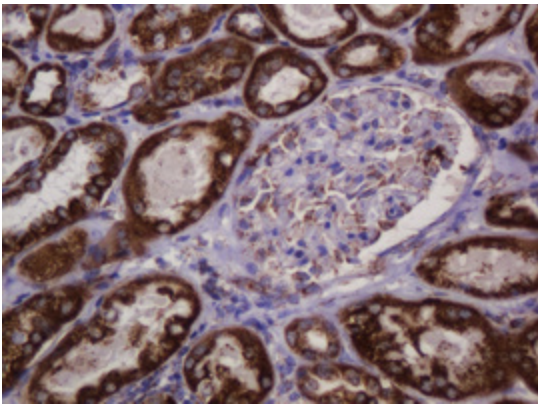
HEK293T cells were transfected with the pCMV6-ENTRY control (Left lane) or pCMV6-ENTRY HSPD1 ([RC201281], Right lane) cDNA for 48 hrs and lysed. Equivalent amounts of cell lysates (5 ug per lane) were separated by SDS-PAGE and immunoblotted with anti-HSPD1. Positive lysates [LY404564] (100ug) and [LC404564] (20ug) can be purchased separately from OriGene.



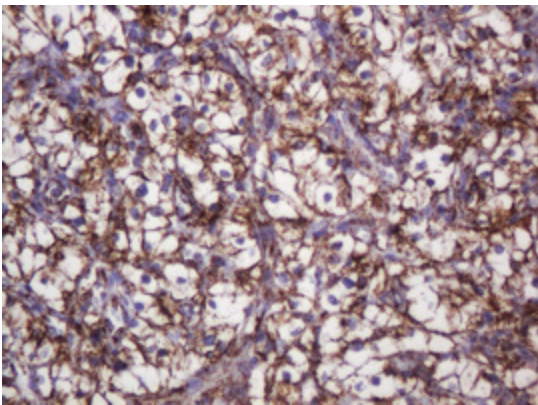
Immunohistochemical staining of paraffin-embedded Adenocarcinoma of Human breast tissue using anti-HSPD1 mouse monoclonal antibody. (Heat-induced epitope retrieval by 10mM citric buffer, pH6.0, 120°C for 3min, [TA800847])



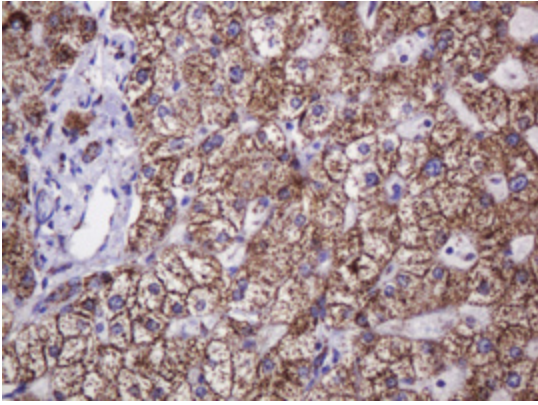
Immunohistochemical staining of paraffin-embedded Adenocarcinoma of Human colon tissue using anti-HSPD1 mouse monoclonal antibody. (Heat-induced epitope retrieval by 10mM citric buffer, pH6.0, 120°C for 3min, [TA800847])



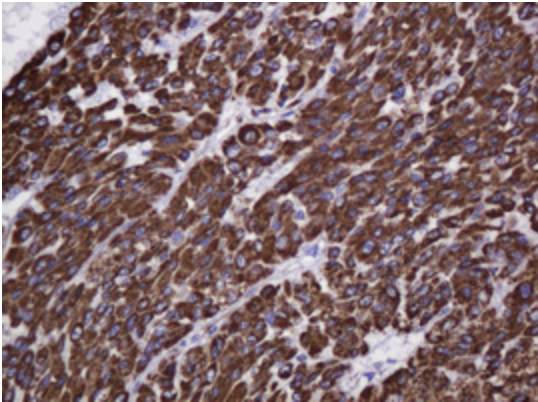
Immunohistochemical staining of paraffin-embedded Human Kidney tissue within the normal limits using anti-HSPD1 mouse monoclonal antibody. (Heat-induced epitope retrieval by 10mM citric buffer, pH6.0, 120°C for 3min, [TA800847])



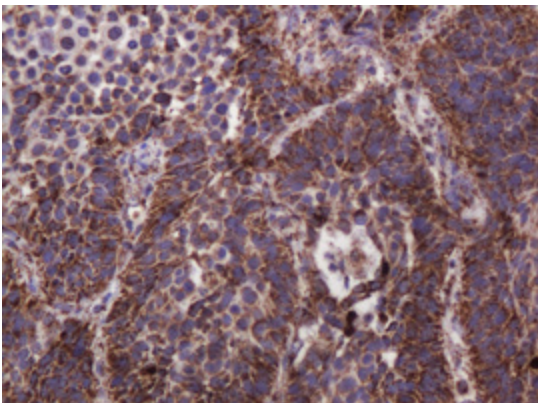
Immunohistochemical staining of paraffin-embedded Carcinoma of Human kidney tissue using anti-HSPD1 mouse monoclonal antibody. (Heat-induced epitope retrieval by 10mM citric buffer, pH6.0, 120°C for 3min, [TA800847])



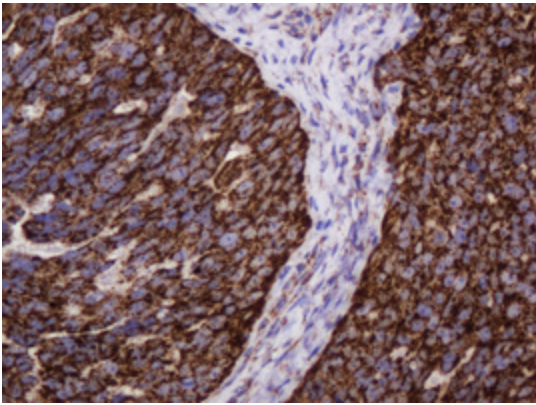
Immunohistochemical staining of paraffin-embedded Human liver tissue within the normal limits using anti-HSPD1 mouse monoclonal antibody. (Heat-induced epitope retrieval by 10mM citric buffer, pH6.0, 120°C for 3min, [TA800847])



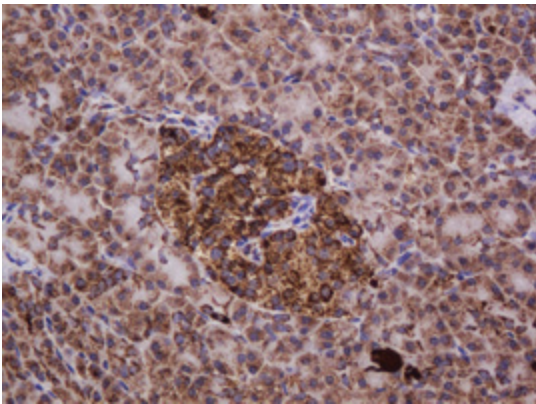
Immunohistochemical staining of paraffin-embedded Carcinoma of Human liver tissue using anti-HSPD1 mouse monoclonal antibody. (Heat-induced epitope retrieval by 10mM citric buffer, pH6.0, 120°C for 3min, [TA800847])



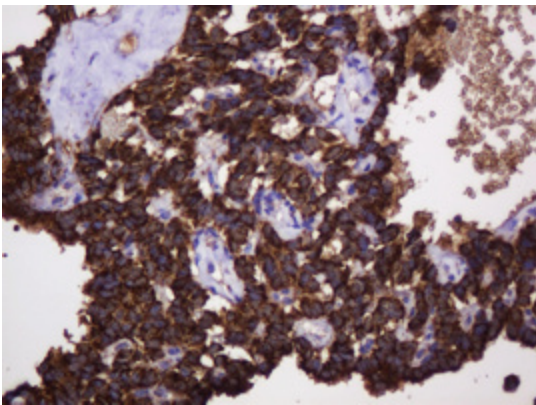
Immunohistochemical staining of paraffin-embedded Carcinoma of Human lung tissue using anti-HSPD1 mouse monoclonal antibody. (Heat-induced epitope retrieval by 10mM citric buffer, pH6.0, 120°C for 3min, [TA800847])



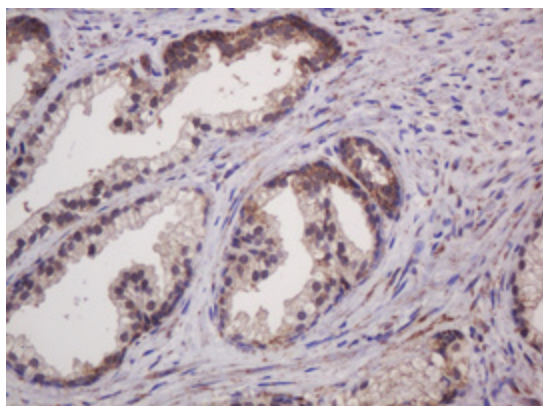
Immunohistochemical staining of paraffin-embedded Adenocarcinoma of Human ovary tissue using anti-HSPD1 mouse monoclonal antibody. (Heat-induced epitope retrieval by 10mM citric buffer, pH6.0, 120°C for 3min, [TA800847])



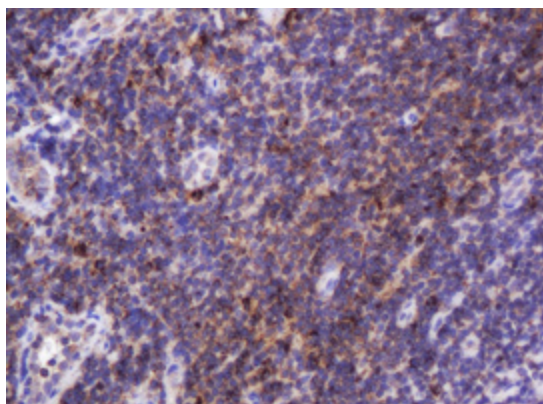
Immunohistochemical staining of paraffin-embedded Human pancreas tissue within the normal limits using anti-HSPD1 mouse monoclonal antibody. (Heat-induced epitope retrieval by 10mM citric buffer, pH6.0, 120°C for 3min, [TA800847])



Immunohistochemical staining of paraffin-embedded Carcinoma of Human pancreas tissue using anti-HSPD1 mouse monoclonal antibody. (Heat-induced epitope retrieval by 10mM citric buffer, pH6.0, 120°C for 3min, [TA800847])



Immunohistochemical staining of paraffin-embedded Human prostate tissue within the normal limits using anti-HSPD1 mouse monoclonal antibody. (Heat-induced epitope retrieval by 10mM citric buffer, pH6.0, 120°C for 3min, [TA800847])



Immunohistochemical staining of paraffin-embedded Human tonsil within the normal limits using anti-HSPD1 mouse monoclonal antibody. (Heat-induced epitope retrieval by 10mM citric buffer, pH6.0, 120°C for 3min, [TA800847])