

Product datasheet for **TA800815AM**

CUEDC2 Mouse Monoclonal Antibody (Biotin conjugated) [Clone ID: OTI2H6]

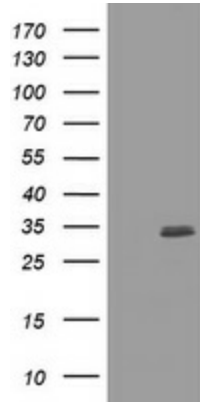
Product data:

Product Type:	Primary Antibodies
Clone Name:	OTI2H6
Applications:	WB
Recommended Dilution:	WB 1:2000
Reactivity:	Human, Mouse, Rat
Host:	Mouse
Isotype:	IgG1
Clonality:	Monoclonal
Immunogen:	Full length human recombinant protein of human CUEDC2 (NP_076945) produced in E.coli.
Formulation:	PBS (pH 7.3) containing 1% BSA, 50% glycerol and 0.02% sodium azide.
Concentration:	0.5 mg/ml
Purification:	Purified from mouse ascites fluids or tissue culture supernatant by affinity chromatography (protein A/G)
Conjugation:	Biotin
Storage:	Store at -20°C as received.
Stability:	Stable for 12 months from date of receipt.
Predicted Protein Size:	31.8 kDa
Gene Name:	CUE domain containing 2
Database Link:	NP_076945 Entrez Gene 67116 Mouse Entrez Gene 294009 Rat Entrez Gene 79004 Human Q9H467
Synonyms:	bA18114.5; C10orf66

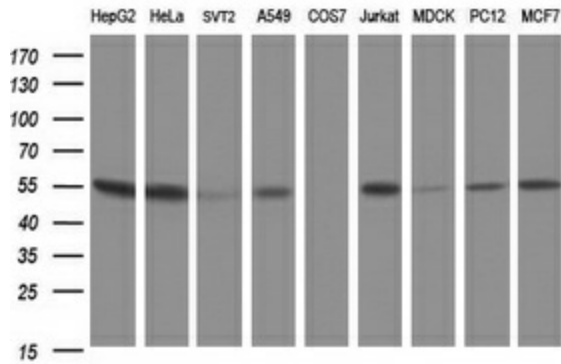


[View online »](#)

Product images:



HEK293T cells were transfected with the pCMV6-ENTRY control (Cat# [PS100001], Left lane) or pCMV6-ENTRY CUEDC2 (Cat# [RC200790], Right lane) cDNA for 48 hrs and lysed. Equivalent amounts of cell lysates (5 ug per lane) were separated by SDS-PAGE and immunoblotted with anti-CUEDC2 (Cat# [TA800815]). Positive lysates [LY411416] (100ug) and [LC411416] (20ug) can be purchased separately from OriGene.



Western blot analysis of extracts (35ug) from 9 different cell lines by using anti-CUEDC2 monoclonal antibody (HepG2: human; HeLa: human; SVT2: mouse; A549: human; COS7: monkey; Jurkat: human; MDCK: canine; PC12: rat; MCF7: human).