

Product datasheet for **TA800811AM**

S100A1 Mouse Monoclonal Antibody (Biotin conjugated) [Clone ID: OTI6G4]

Product data:

Product Type:	Primary Antibodies
Clone Name:	OTI6G4
Applications:	ELISA, WB
Recommended Dilution:	WB 1:2000
Reactivity:	Human, Mouse, Rat
Host:	Mouse
Isotype:	IgG1
Clonality:	Monoclonal
Immunogen:	Full length human recombinant protein of human S100A1 (NP_006262) produced in E.coli.
Formulation:	PBS (pH 7.3) containing 1% BSA, 50% glycerol and 0.02% sodium azide.
Concentration:	0.5 mg/ml
Purification:	Purified from mouse ascites fluids or tissue culture supernatant by affinity chromatography (protein A/G)
Conjugation:	Biotin
Storage:	Store at -20°C as received.
Stability:	Stable for 12 months from date of receipt.
Predicted Protein Size:	10.4 kDa
Gene Name:	S100 calcium binding protein A1
Database Link:	NP_006262 Entrez Gene 20193 Mouse Entrez Gene 295214 Rat Entrez Gene 6271 Human P23297



[View online »](#)

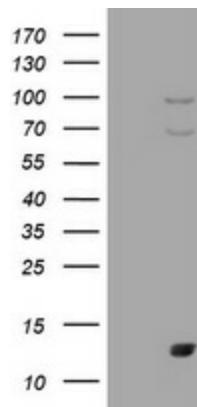
Background:

The protein encoded by this gene is a member of the S100 family of proteins containing 2 EF-hand calcium-binding motifs. S100 proteins are localized in the cytoplasm and/or nucleus of a wide range of cells, and involved in the regulation of a number of cellular processes such as cell cycle progression and differentiation. S100 genes include at least 13 members which are located as a cluster on chromosome 1q21. This protein may function in stimulation of Ca²⁺-induced Ca²⁺ release, inhibition of microtubule assembly, and inhibition of protein kinase C-mediated phosphorylation. Reduced expression of this protein has been implicated in cardiomyopathies. [provided by RefSeq, Jul 2008]

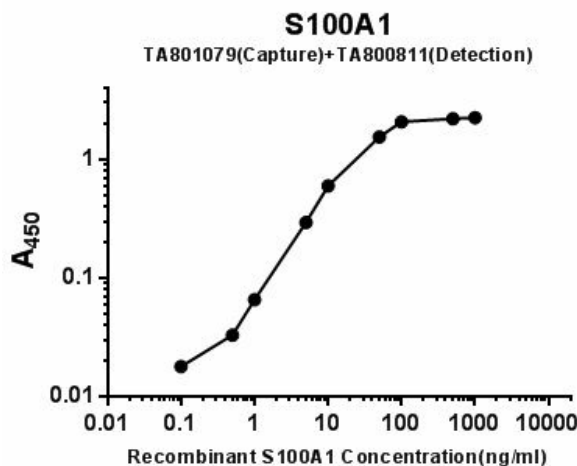
Synonyms:

S100; S100-alpha; S100A

Product images:



HEK293T cells were transfected with the pCMV6-ENTRY control (Left lane) or pCMV6-ENTRY S100A1 ([RC200278], Right lane) cDNA for 48 hrs and lysed. Equivalent amounts of cell lysates (5 ug per lane) were separated by SDS-PAGE and immunoblotted with anti-S100A1. Positive lysates [LY401900] (100ug) and [LC401900] (20ug) can be purchased separately from OriGene.



Standard curve for ELISA analysis with S100A1 recombinant protein (dilution range from 100pg/ml to 1ug/ml) using S100A1 Capture Antibody (Cat# [TA801079]) at 5ug/ml and HRP conjugated S100A1 Detection mAb (Cat# [TA800811]) at 0.033ug/ml.