

## Product datasheet for **TA800806BM**

### CTNND1 Mouse Monoclonal Antibody (HRP conjugated) [Clone ID: OTI3G1]

#### Product data:

Product Type:	Primary Antibodies
Clone Name:	OTI3G1
Applications:	IHC, WB
Recommended Dilution:	WB 1:2000, IHC 1:150
Reactivity:	Human, Mouse, Rat
Host:	Mouse
Isotype:	IgG1
Clonality:	Monoclonal
Immunogen:	Full length human recombinant protein of human CTNND1 (NP_001078927) produced in HEK293T cell.
Formulation:	PBS (pH 7.3) containing 1% BSA, 50% glycerol.
Concentration:	0.5 mg/ml
Purification:	Purified from mouse ascites fluids or tissue culture supernatant by affinity chromatography (protein A/G)
Conjugation:	HRP
Storage:	Store at -20°C as received.
Stability:	Stable for 12 months from date of receipt.
Predicted Protein Size:	108 kDa
Gene Name:	catenin delta 1
Database Link:	<a href="#">NP_001078927</a> <a href="#">Entrez Gene 12388 Mouse</a> <a href="#">Entrez Gene 311163 Rat</a> <a href="#">Entrez Gene 1500 Human</a> <a href="#">O60716</a>
Background:	This gene encodes a member of the Armadillo protein family, which function in adhesion between cells and signal transduction. Multiple translation initiation codons and alternative splicing result in many different isoforms being translated. Not all of the full-length nature of the described transcript variants have been determined. Read-through transcription also exists between this gene and the neighboring upstream thioredoxin-related transmembrane protein 2 (TMX2) gene. [provided by RefSeq, Dec 2010]



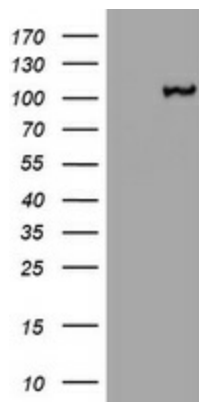
[View online »](#)

**Synonyms:** CAS; CTNND; p120; p120(CAS); p120(CTN); P120CAS; P120CTN

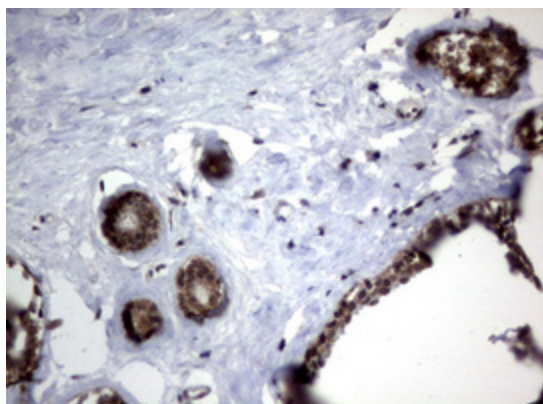
**Protein Families:** Druggable Genome

**Protein Pathways:** Adherens junction, Leukocyte transendothelial migration

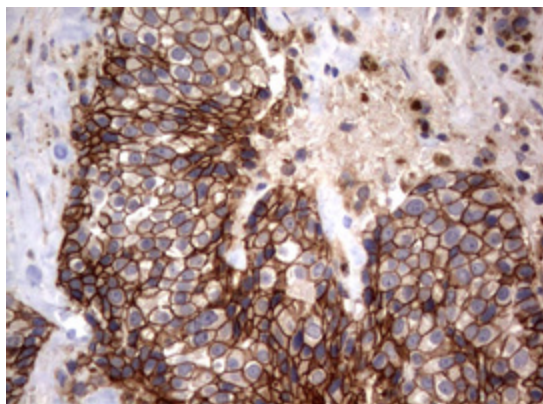
**Product images:**



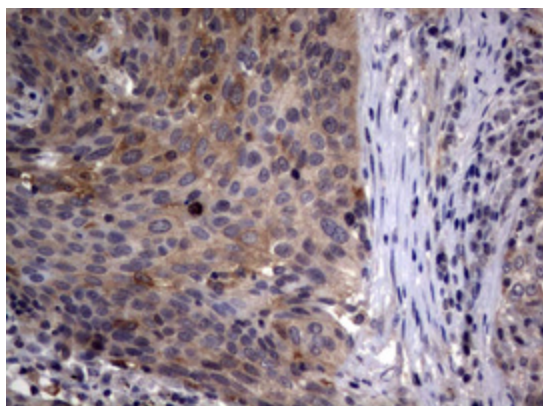
HEK293T cells were transfected with the pCMV6-ENTRY control (Left lane) or pCMV6-ENTRY CTNND1 ([RC222771], Right lane) cDNA for 48 hrs and lysed. Equivalent amounts of cell lysates (5 ug per lane) were separated by SDS-PAGE and immunoblotted with anti-CTNND1. Positive lysates [LY421307] (100ug) and [LC421307] (20ug) can be purchased separately from OriGene.



Immunohistochemical staining of paraffin-embedded Human breast tissue within the normal limits using anti-CTNND1 mouse monoclonal antibody. (Heat-induced epitope retrieval by 10mM citric buffer, pH6.0, 120°C for 3min, [TA800806])



Immunohistochemical staining of paraffin-embedded Adenocarcinoma of Human breast tissue using anti-CTNND1 mouse monoclonal antibody. (Heat-induced epitope retrieval by 10mM citric buffer, pH6.0, 120°C for 3min, [TA800806])



Immunohistochemical staining of paraffin-embedded Carcinoma of Human lung tissue using anti-CTNND1 mouse monoclonal antibody. (Heat-induced epitope retrieval by 10mM citric buffer, pH6.0, 120°C for 3min, [TA800806])