

## Product datasheet for **TA800769S**

### EMA (MUC1) Mouse Monoclonal Antibody [Clone ID: OT11F3]

#### Product data:

Product Type:	Primary Antibodies
Clone Name:	OT11F3
Applications:	IF, IHC, WB
Recommended Dilution:	WB 1:2000, IHC 1:150
Reactivity:	Human
Host:	Mouse
Isotype:	IgG1
Clonality:	Monoclonal
Immunogen:	Full length human recombinant protein of human MUC1 (NP_001018016) produced in HEK293T cell.
Formulation:	PBS (pH 7.3) containing 1% BSA, 50% glycerol and 0.02% sodium azide.
Concentration:	1 mg/ml
Purification:	Purified from mouse ascites fluids or tissue culture supernatant by affinity chromatography (protein A/G)
Conjugation:	Unconjugated
Storage:	Store at -20°C as received.
Stability:	Stable for 12 months from date of receipt.
Predicted Protein Size:	25.1 kDa
Gene Name:	mucin 1, cell surface associated
Database Link:	<a href="#">NP_001018016</a> <a href="#">Entrez Gene 4582 Human</a> <a href="#">P15941</a>



[View online »](#)

**Background:**

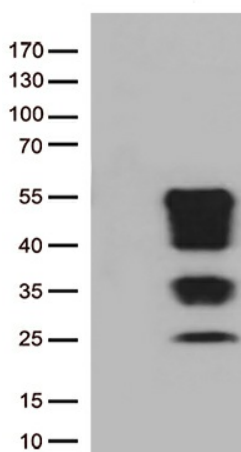
This gene encodes a membrane-bound protein that is a member of the mucin family. Mucins are O-glycosylated proteins that play an essential role in forming protective mucous barriers on epithelial surfaces. These proteins also play a role in intracellular signaling. This protein is expressed on the apical surface of epithelial cells that line the mucosal surfaces of many different tissues including lung, breast stomach and pancreas. This protein is proteolytically cleaved into alpha and beta subunits that form a heterodimeric complex. The N-terminal alpha subunit functions in cell-adhesion and the C-terminal beta subunit is involved in cell signaling. Overexpression, aberrant intracellular localization, and changes in glycosylation of this protein have been associated with carcinomas. This gene is known to contain a highly polymorphic variable number tandem repeats (VNTR) domain. Alternate splicing results in multiple transcript variants. [provided by RefSeq, Feb 2011]

**Synonyms:**

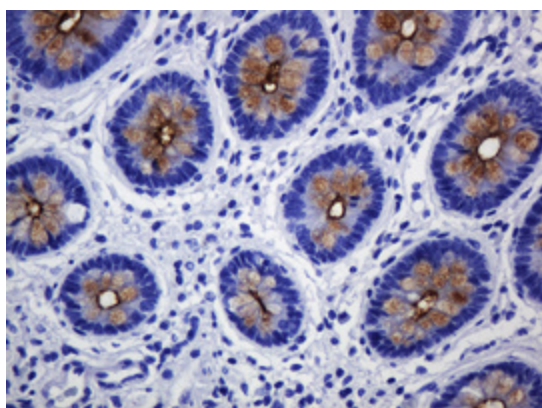
ADMCKD; ADMCKD1; CA 15-3; CD227; EMA; H23AG; KL-6; MAM6; MCD; MCKD; MCKD1; MUC-1; SEC

**Protein Families:**

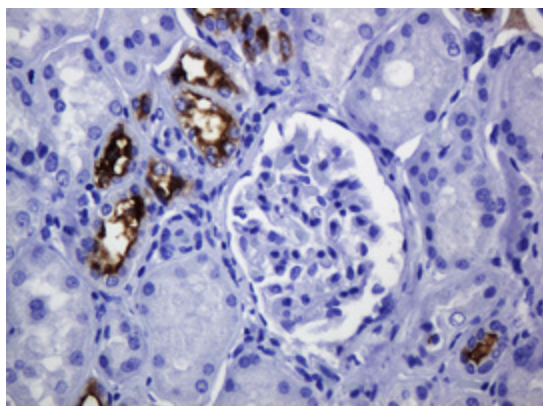
Druggable Genome, Secreted Protein, Transmembrane

**Product images:**

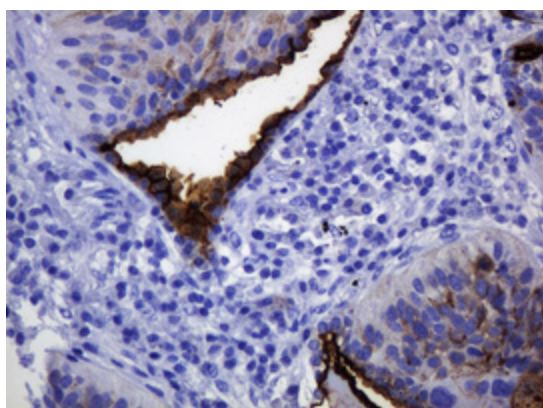
HEK293T cells were transfected with the pCMV6-ENTRY control (Left lane) or pCMV6-ENTRY MUC1 ([RC221390], Right lane) cDNA for 48 hrs and lysed. Equivalent amounts of cell lysates (5 ug per lane) were separated by SDS-PAGE and immunoblotted with anti-MUC1 (1:2000).



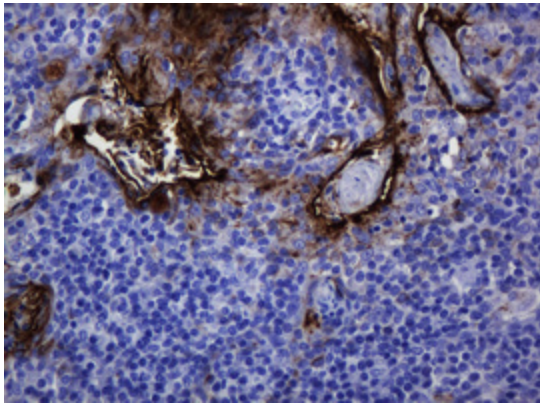
Immunohistochemical staining of paraffin-embedded Human colon tissue within the normal limits using anti-MUC1 mouse monoclonal antibody. ([TA800769]) Dilution: 1:150



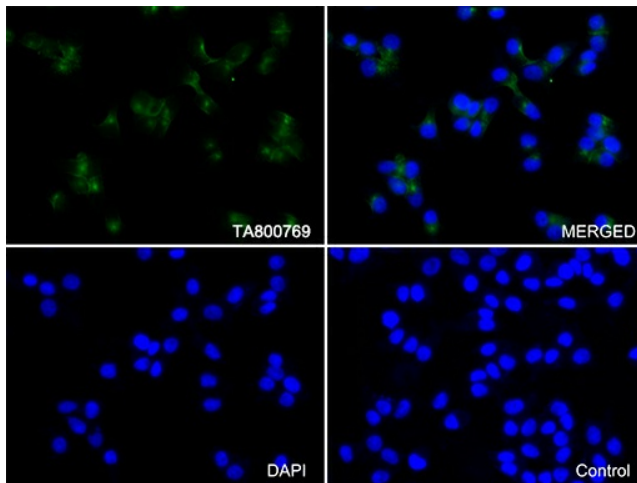
Immunohistochemical staining of paraffin-embedded Human Kidney tissue within the normal limits using anti-MUC1 mouse monoclonal antibody. ([TA800769]) Dilution: 1:150



Immunohistochemical staining of paraffin-embedded Carcinoma of Human lung tissue using anti-MUC1 mouse monoclonal antibody. ([TA800769]) Dilution: 1:150



Immunohistochemical staining of paraffin-embedded Human tonsil within the normal limits using anti-MUC1 mouse monoclonal antibody. ([TA800769]) Dilution: 1:150



Immunofluorescent staining of T47D cells using anti-MUC1 antibody ([TA800769]/green, upper left; DAPI/blue, lower left; MERGED, upper right) or Isotype control (MERGED, lower right) (1:100).