

## Product datasheet for **TA800761BM**

### **HIF3 alpha (HIF3A) Mouse Monoclonal Antibody (HRP conjugated) [Clone ID: OTI5B7]**

#### **Product data:**

Product Type:	Primary Antibodies
Clone Name:	OTI5B7
Applications:	WB
Recommended Dilution:	WB 1:500
Reactivity:	Human
Host:	Mouse
Isotype:	IgG1
Clonality:	Monoclonal
Immunogen:	Human recombinant protein fragment corresponding to amino acids 355-669 of human HIF3A (NP_690008) produced in E.coli.
Formulation:	PBS (pH 7.3) containing 1% BSA, 50% glycerol.
Concentration:	0.5 mg/ml
Purification:	Purified from mouse ascites fluids or tissue culture supernatant by affinity chromatography (protein A/G)
Conjugation:	HRP
Storage:	Store at -20°C as received.
Stability:	Stable for 12 months from date of receipt.
Predicted Protein Size:	72.3 kDa
Gene Name:	hypoxia inducible factor 3 alpha subunit
Database Link:	<a href="#">NP_690008</a> <a href="#">Entrez Gene 64344 Human</a> <a href="#">Q9Y2N7</a>



[View online »](#)

**Background:**

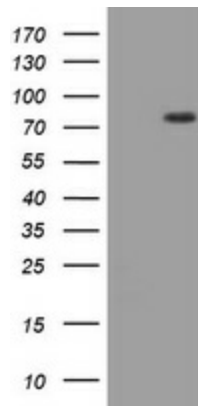
The protein encoded by this gene is the alpha-3 subunit of one of several alpha/beta-subunit heterodimeric transcription factors that regulate many adaptive responses to low oxygen tension (hypoxia). The alpha-3 subunit lacks the transactivation domain found in factors containing either the alpha-1 or alpha-2 subunits. It is thought that factors containing the alpha-3 subunit are negative regulators of hypoxia-inducible gene expression. Multiple alternatively spliced transcript variants have been found for this gene. [provided by RefSeq, Mar 2011]

**Synonyms:**

bHLHe17; HIF-3A; HIF3-alpha-1; IPAS; MOP7; PASD7

**Protein Families:**

Druggable Genome, Transcription Factors

**Product images:**

HEK293T cells were transfected with the pCMV6-ENTRY control (Left lane) or pCMV6-ENTRY HIF3A ([RC210255], Right lane) cDNA for 48 hrs and lysed. Equivalent amounts of cell lysates (5 ug per lane) were separated by SDS-PAGE and immunoblotted with anti-HIF3A. Positive lysates [LY407285] (100ug) and [LC407285] (20ug) can be purchased separately from OriGene.