

Product datasheet for **TA800750S**

HES6 Mouse Monoclonal Antibody [Clone ID: OTI2F7]

Product data:

Product Type:	Primary Antibodies
Clone Name:	OTI2F7
Applications:	WB
Recommended Dilution:	WB 1:2000
Reactivity:	Human, Mouse, Rat
Host:	Mouse
Isotype:	IgG1
Clonality:	Monoclonal
Immunogen:	Full length human recombinant protein of human HES6 (NP_061115) produced in E.coli.
Formulation:	PBS (pH 7.3) containing 1% BSA, 50% glycerol and 0.02% sodium azide.
Concentration:	1 mg/ml
Purification:	Purified from mouse ascites fluids or tissue culture supernatant by affinity chromatography (protein A/G)
Conjugation:	Unconjugated
Storage:	Store at -20°C as received.
Stability:	Stable for 12 months from date of receipt.
Predicted Protein Size:	23.9 kDa
Gene Name:	hes family bHLH transcription factor 6
Database Link:	NP_061115 Entrez Gene 55927 Mouse Entrez Gene 316626 Rat Entrez Gene 55502 Human Q96HZ4
Background:	This gene encodes a member of a subfamily of basic helix-loop-helix transcription repressors that have homology to the Drosophila enhancer of split genes. Members of this gene family regulate cell differentiation in numerous cell types. The protein encoded by this gene functions as a cofactor, interacting with other transcription factors through a tetrapeptide domain in its C-terminus. Alternatively spliced transcript variants encoding different isoforms have been described. [provided by RefSeq, Dec

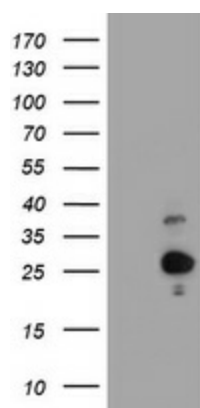


[View online »](#)

Synonyms: bHLHb41; bHLHc23; C-HAIRY1; HES-6

Protein Families: Druggable Genome, Transcription Factors

Product images:



HEK293T cells were transfected with the pCMV6-ENTRY control (Left lane) or pCMV6-ENTRY HES6 ([RC203205], Right lane) cDNA for 48 hrs and lysed. Equivalent amounts of cell lysates (5 ug per lane) were separated by SDS-PAGE and immunoblotted with anti-HES6. Positive lysates [LY412988] (100ug) and [LC412988] (20ug) can be purchased separately from OriGene.