

Product datasheet for **TA800729BM**

Progesterone Receptor (PGR) Mouse Monoclonal Antibody (HRP conjugated) [Clone ID: OTI1G7]

Product data:

Product Type:	Primary Antibodies
Clone Name:	OTI1G7
Applications:	WB
Recommended Dilution:	WB 1:2000
Reactivity:	Human
Host:	Mouse
Isotype:	IgG1
Clonality:	Monoclonal
Immunogen:	Full length human recombinant protein of human PGR (NP_000917) produced in HEK293T cell.
Formulation:	PBS (pH 7.3) containing 1% BSA, 50% glycerol.
Concentration:	0.5 mg/ml
Purification:	Purified from mouse ascites fluids or tissue culture supernatant by affinity chromatography (protein A/G)
Conjugation:	HRP
Storage:	Store at -20°C as received.
Stability:	Stable for 12 months from date of receipt.
Predicted Protein Size:	98.8 kDa
Gene Name:	progesterone receptor
Database Link:	NP_000917 Entrez Gene 5241 Human P06401



[View online »](#)

Background:

This gene encodes a member of the steroid receptor superfamily. The encoded protein mediates the physiological effects of progesterone, which plays a central role in reproductive events associated with the establishment and maintenance of pregnancy. This gene uses two distinct promoters and translation start sites in the first exon to produce two isoforms, A and B. The two isoforms are identical except for the additional 165 amino acids found in the N-terminus of isoform B and mediate their own response genes and physiologic effects with little overlap. [provided by RefSeq, Jan 2011]

Synonyms:

NR3C3; PR

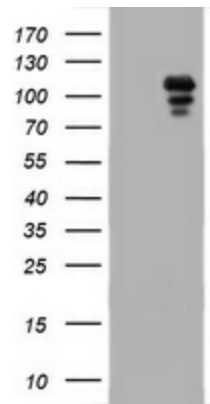
Protein Families:

Druggable Genome, Nuclear Hormone Receptor, Transcription Factors

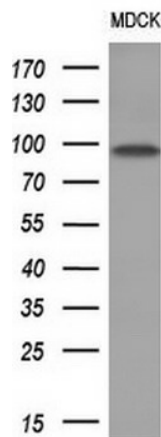
Protein Pathways:

Oocyte meiosis, Progesterone-mediated oocyte maturation

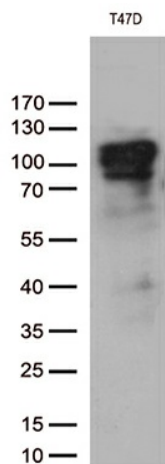
Product images:



HEK293T cells were transfected with the pCMV6-ENTRY control (Left lane) or pCMV6-ENTRY PGR ([RC221303], Right lane) cDNA for 48 hrs and lysed. Equivalent amounts of cell lysates (5 ug per lane) were separated by SDS-PAGE and immunoblotted with anti-PGR. Positive lysates [LY424456] (100ug) and [LC424456] (20ug) can be purchased separately from OriGene.



Western blot analysis of extracts (10ug) from 1 cell line by using anti-PGR monoclonal antibody (1:200).



Western blot analysis of extracts (35ug) from T47D cells by using anti-PGR monoclonal antibody (1:500).