

## Product datasheet for **TA800727BM**

### Cytokeratin 5 (KRT5) Mouse Monoclonal Antibody (HRP conjugated) [Clone ID: OTI6F8]

#### Product data:

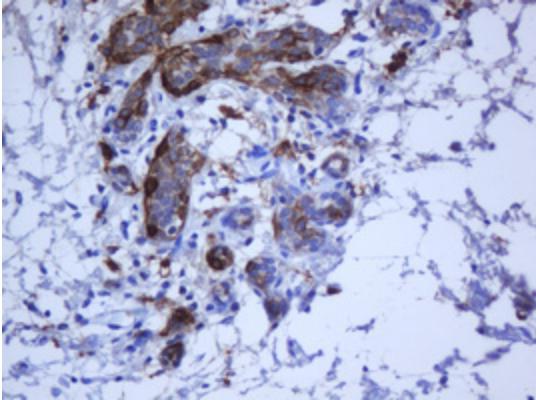
Product Type:	Primary Antibodies
Clone Name:	OTI6F8
Applications:	IHC
Recommended Dilution:	IHC 1:150
Reactivity:	Human, Mouse, Rat
Host:	Mouse
Isotype:	IgG1
Clonality:	Monoclonal
Immunogen:	Synthetic peptide corresponding to the conserved region of human KRT5 and KRT6
Formulation:	PBS (pH 7.3) containing 1% BSA, 50% glycerol.
Concentration:	0.5 mg/ml
Purification:	Purified from mouse ascites fluids or tissue culture supernatant by affinity chromatography (protein A/G)
Conjugation:	HRP
Storage:	Store at -20°C as received.
Stability:	Stable for 12 months from date of receipt.
Predicted Protein Size:	62.2 kDa
Gene Name:	keratin 5
Database Link:	<a href="#">NP_000415</a> <a href="#">Entrez Gene 110308 Mouse</a> <a href="#">Entrez Gene 369017 Rat</a> <a href="#">Entrez Gene 3852 Human</a> <a href="#">P13647</a>
Background:	The protein encoded by this gene is a member of the keratin gene family. The type II cytokeratins consist of basic or neutral proteins which are arranged in pairs of heterotypic keratin chains coexpressed during differentiation of simple and stratified epithelial tissues. This type II cytokeratin is specifically expressed in the basal layer of the epidermis with family member KRT14. Mutations in these genes have been associated with a complex of diseases termed epidermolysis bullosa simplex. The type II cytokeratins are clustered in a region of chromosome 12q12-q13. [provided by RefSeq, Jul 2008]



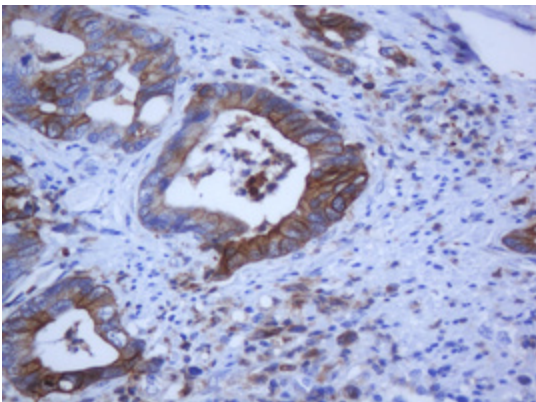
[View online »](#)

Synonyms: CK5; DDD; DDD1; EBS2; K5; KRT5A

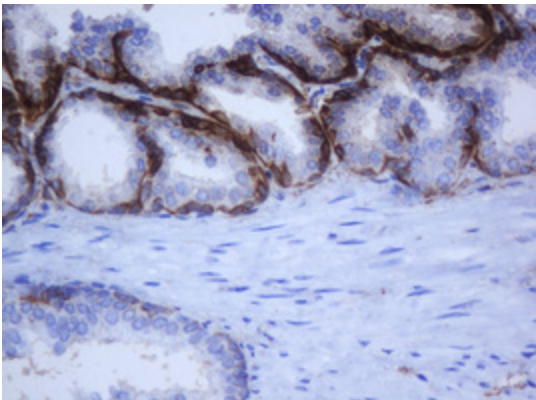
### Product images:



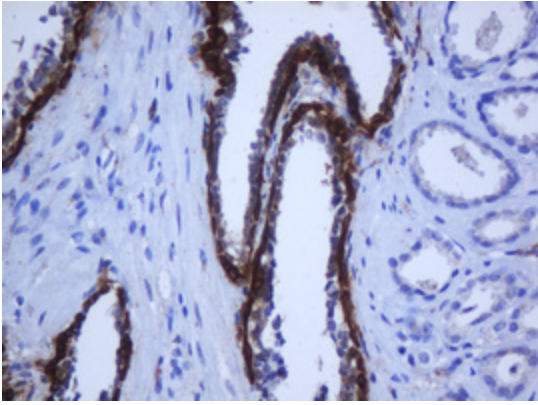
Immunohistochemical staining of paraffin-embedded Human breast tissue within the normal limits using anti-KRT5 mouse monoclonal antibody. (Heat-induced epitope retrieval by 10mM citric buffer, pH6.0, 120°C for 3min, [TA800727])



Immunohistochemical staining of paraffin-embedded Adenocarcinoma of Human colon tissue using anti-KRT5 mouse monoclonal antibody. (Heat-induced epitope retrieval by 10mM citric buffer, pH6.0, 120°C for 3min, [TA800727])



Immunohistochemical staining of paraffin-embedded Human prostate tissue within the normal limits using anti-KRT5 mouse monoclonal antibody. (Heat-induced epitope retrieval by 10mM citric buffer, pH6.0, 120°C for 3min, [TA800727])



Immunohistochemical staining of paraffin-embedded Carcinoma of Human prostate tissue using anti-KRT5 mouse monoclonal antibody. (Heat-induced epitope retrieval by 10mM citric buffer, pH6.0, 120°C for 3min, [TA800727])