

Product datasheet for **TA800707BM**

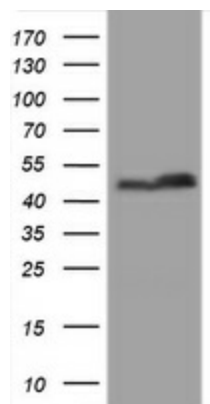
SERBP1 Mouse Monoclonal Antibody (HRP conjugated) [Clone ID: OTI5G2]

Product data:

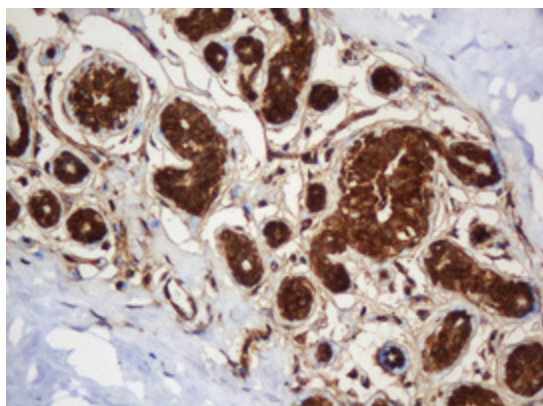
Product Type:	Primary Antibodies
Clone Name:	OTI5G2
Applications:	IHC, WB
Recommended Dilution:	WB 1:2000, IHC 1:150
Reactivity:	Human, Mouse
Host:	Mouse
Isotype:	IgG2a
Clonality:	Monoclonal
Immunogen:	Human recombinant protein fragment corresponding to amino acids 1-262 of human SERBP1 (NP_001018078) produced in E.coli.
Formulation:	PBS (pH 7.3) containing 1% BSA, 50% glycerol.
Concentration:	0.5 mg/ml
Purification:	Purified from mouse ascites fluids or tissue culture supernatant by affinity chromatography (protein A/G)
Conjugation:	HRP
Storage:	Store at -20°C as received.
Stability:	Stable for 12 months from date of receipt.
Predicted Protein Size:	44.1 kDa
Gene Name:	SERPINE1 mRNA binding protein 1
Database Link:	NP_001018078 Entrez Gene 66870 Mouse Entrez Gene 26135 Human Q8NC51
Synonyms:	CGI-55; CHD3IP; HABP4L; PAI-RBP1; PAIRBP1



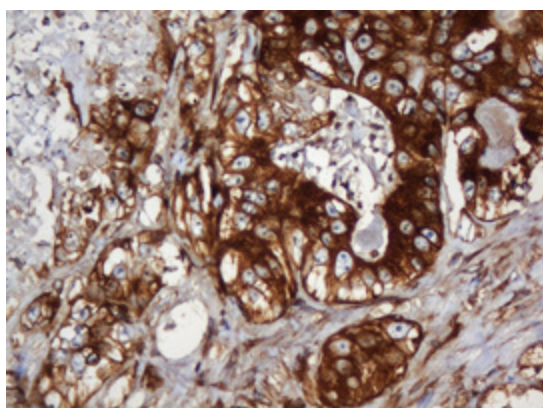
[View online »](#)

Product images:

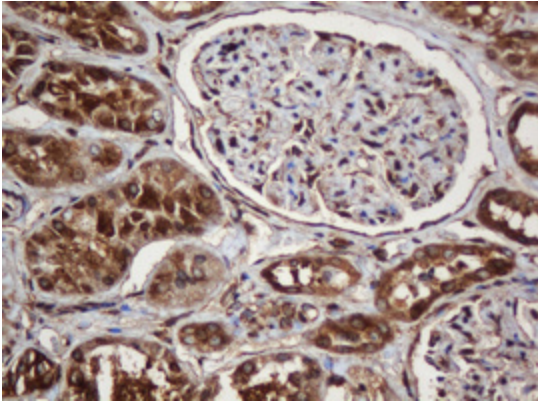
HEK293T cells were transfected with the pCMV6-ENTRY control (Cat# [PS100001], Left lane) or pCMV6-ENTRY SERBP1 (Cat# [RC204527], Right lane) cDNA for 48 hrs and lysed. Equivalent amounts of cell lysates (5 ug per lane) were separated by SDS-PAGE and immunoblotted with anti-SERBP1 (Cat# [TA800707]). Positive lysates [LY422719] (100ug) and [LC422719] (20ug) can be purchased separately from OriGene.



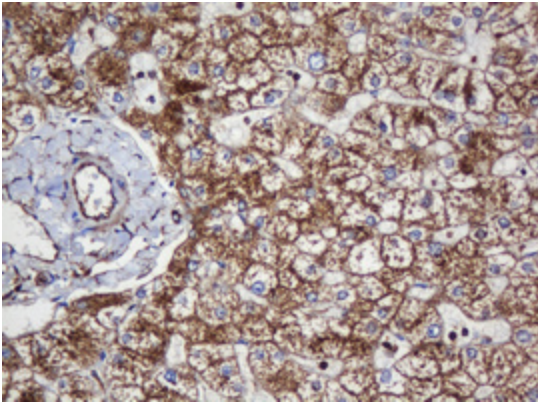
Immunohistochemical staining of paraffin-embedded Human breast tissue within the normal limits using anti-SERBP1 mouse monoclonal antibody. (Heat-induced epitope retrieval by 10mM citric buffer, pH6.0, 120°C for 3min, [TA800707])



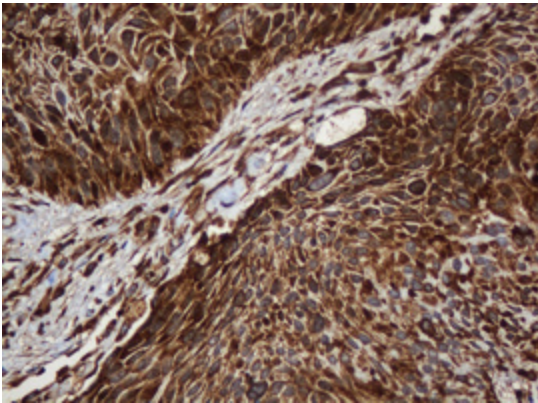
Immunohistochemical staining of paraffin-embedded Adenocarcinoma of Human colon tissue using anti-SERBP1 mouse monoclonal antibody. (Heat-induced epitope retrieval by 10mM citric buffer, pH6.0, 120°C for 3min, [TA800707])



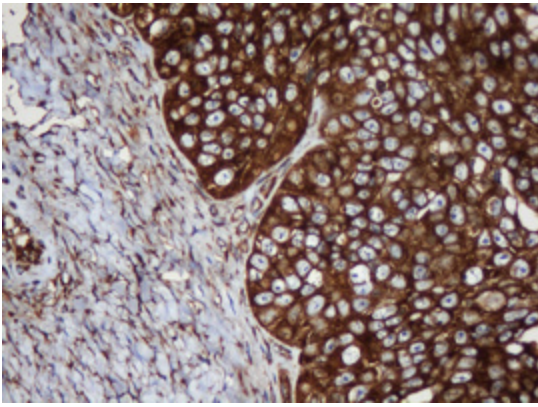
Immunohistochemical staining of paraffin-embedded Human Kidney tissue within the normal limits using anti-SERBP1 mouse monoclonal antibody. (Heat-induced epitope retrieval by 10mM citric buffer, pH6.0, 120°C for 3min, [TA800707])



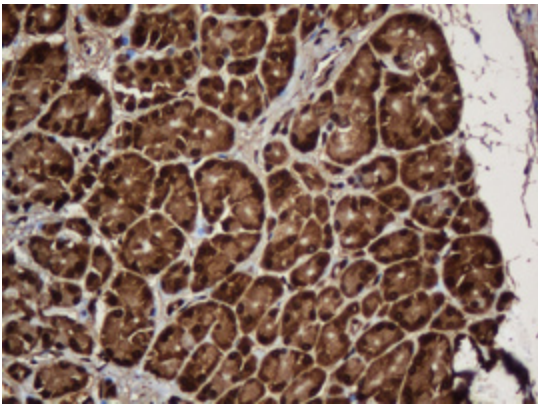
Immunohistochemical staining of paraffin-embedded Human liver tissue within the normal limits using anti-SERBP1 mouse monoclonal antibody. (Heat-induced epitope retrieval by 10mM citric buffer, pH6.0, 120°C for 3min, [TA800707])



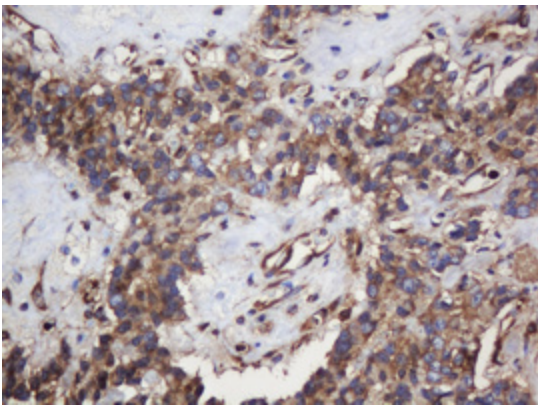
Immunohistochemical staining of paraffin-embedded Carcinoma of Human lung tissue using anti-SERBP1 mouse monoclonal antibody. (Heat-induced epitope retrieval by 10mM citric buffer, pH6.0, 120°C for 3min, [TA800707])



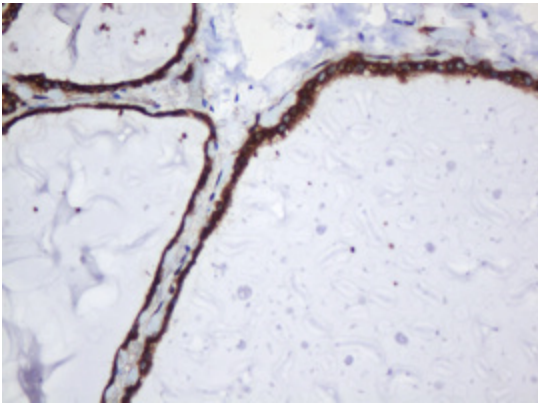
Immunohistochemical staining of paraffin-embedded Adenocarcinoma of Human ovary tissue using anti-SERBP1 mouse monoclonal antibody. (Heat-induced epitope retrieval by 10mM citric buffer, pH6.0, 120°C for 3min, [TA800707])



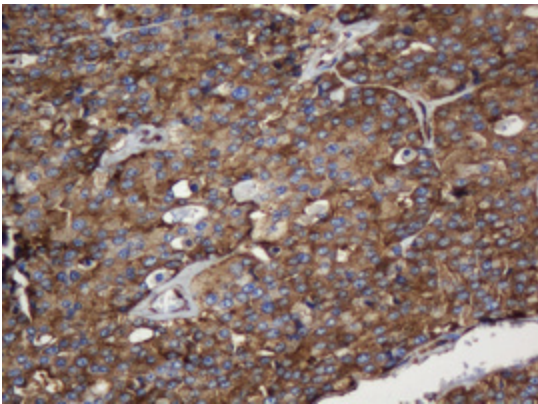
Immunohistochemical staining of paraffin-embedded Human pancreas tissue within the normal limits using anti-SERBP1 mouse monoclonal antibody. (Heat-induced epitope retrieval by 10mM citric buffer, pH6.0, 120°C for 3min, [TA800707])



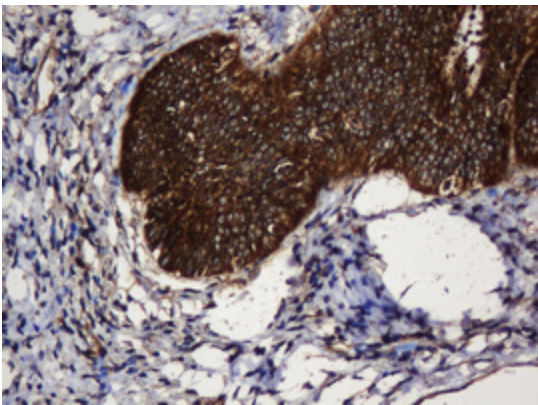
Immunohistochemical staining of paraffin-embedded Carcinoma of Human pancreas tissue using anti-SERBP1 mouse monoclonal antibody. (Heat-induced epitope retrieval by 10mM citric buffer, pH6.0, 120°C for 3min, [TA800707])



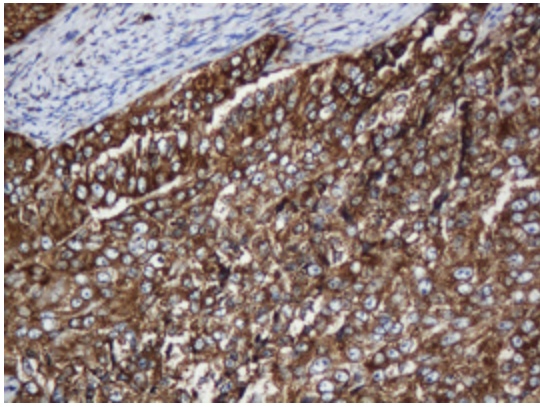
Immunohistochemical staining of paraffin-embedded Human thyroid tissue within the normal limits using anti-SERBP1 mouse monoclonal antibody. (Heat-induced epitope retrieval by 10mM citric buffer, pH6.0, 120°C for 3min, [TA800707])



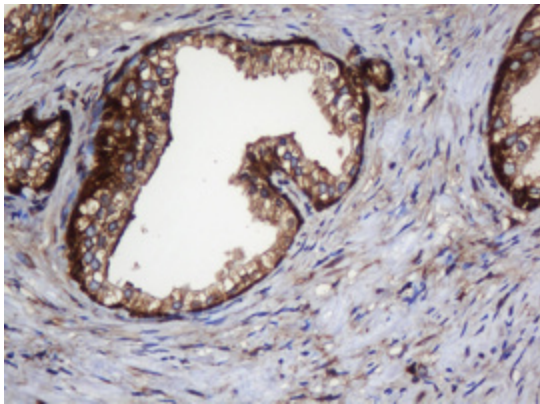
Immunohistochemical staining of paraffin-embedded Carcinoma of Human thyroid tissue using anti-SERBP1 mouse monoclonal antibody. (Heat-induced epitope retrieval by 10mM citric buffer, pH6.0, 120°C for 3min, [TA800707])



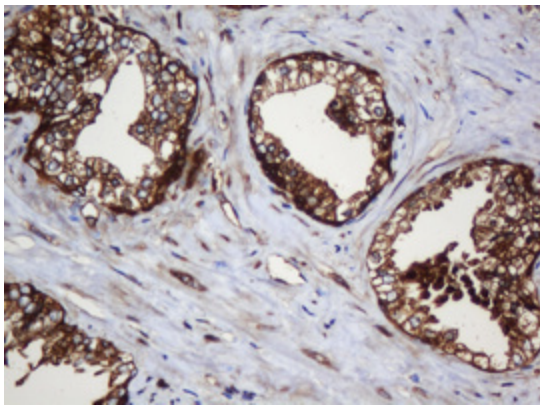
Immunohistochemical staining of paraffin-embedded Human endometrium tissue within the normal limits using anti-SERBP1 mouse monoclonal antibody. (Heat-induced epitope retrieval by 10mM citric buffer, pH6.0, 120°C for 3min, [TA800707])



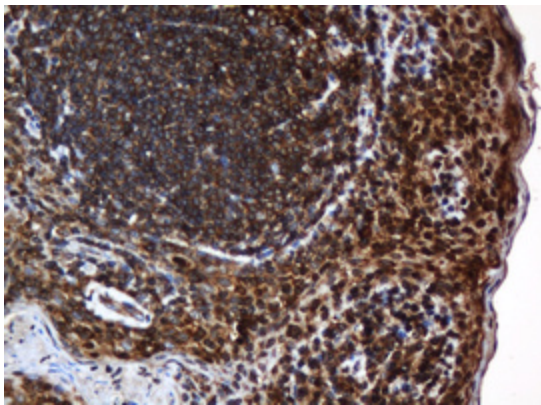
Immunohistochemical staining of paraffin-embedded Adenocarcinoma of Human endometrium tissue using anti-SERBP1 mouse monoclonal antibody. (Heat-induced epitope retrieval by 10mM citric buffer, pH6.0, 120°C for 3min, [TA800707])



Immunohistochemical staining of paraffin-embedded Human prostate tissue within the normal limits using anti-SERBP1 mouse monoclonal antibody. (Heat-induced epitope retrieval by 10mM citric buffer, pH6.0, 120°C for 3min, [TA800707])



Immunohistochemical staining of paraffin-embedded Carcinoma of Human prostate tissue using anti-SERBP1 mouse monoclonal antibody. (Heat-induced epitope retrieval by 10mM citric buffer, pH6.0, 120°C for 3min, [TA800707])



Immunohistochemical staining of paraffin-embedded Human tonsil within the normal limits using anti-SERBP1 mouse monoclonal antibody. (Heat-induced epitope retrieval by 10mM citric buffer, pH6.0, 120°C for 3min, [TA800707])