

## Product datasheet for **TA800674**

### CD2 Mouse Monoclonal Antibody [Clone ID: OTI1D4]

#### Product data:

Product Type:	Primary Antibodies
Clone Name:	OTI1D4
Applications:	FC, WB
Recommended Dilution:	WB 1:2000
Reactivity:	Human
Host:	Mouse
Isotype:	IgG1
Clonality:	Monoclonal
Immunogen:	Full length human recombinant protein of human CD2 (NP_001758) produced in HEK293T cell.
Formulation:	PBS (pH 7.3) containing 1% BSA, 50% glycerol and 0.02% sodium azide.
Concentration:	1 mg/ml
Purification:	Purified from mouse ascites fluids or tissue culture supernatant by affinity chromatography (protein A/G)
Conjugation:	Unconjugated
Storage:	Store at -20°C as received.
Stability:	Stable for 12 months from date of receipt.
Predicted Protein Size:	39.3 kDa
Gene Name:	CD2 molecule
Database Link:	<a href="#">NP_001758</a> <a href="#">Entrez Gene 914 Human</a> <a href="#">P06729</a>
Background:	CD2 is a surface antigen of the human T-lymphocyte lineage that is expressed on all peripheral blood T cells (summarized by Sewell et al., 1986 [PubMed 3490670]). It is one of the earliest T-cell markers, being present on more than 95% of thymocytes; it is also found on some natural killer cells but not on B lymphocytes. Monoclonal antibodies directed against CD2 inhibit the formation of rosettes with sheep erythrocytes, indicating that CD2 is the erythrocyte receptor or is closely associated with it. [supplied by OMIM, Jul 2010]



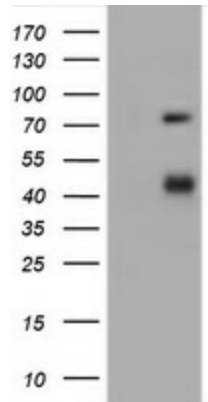
[View online »](#)

**Synonyms:** LFA-2; SRBC; T11

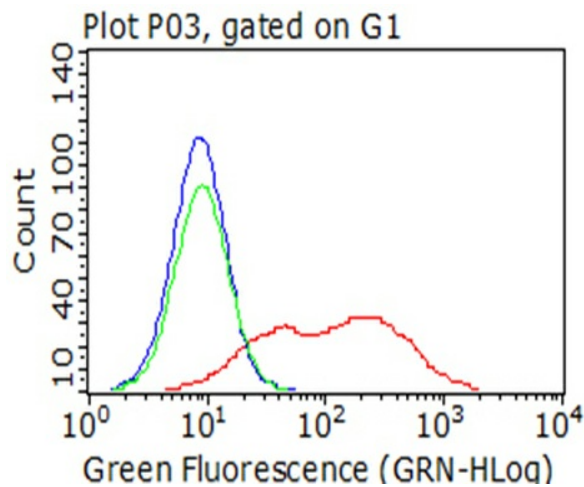
**Protein Families:** Druggable Genome, Transmembrane

**Protein Pathways:** Cell adhesion molecules (CAMs), Hematopoietic cell lineage

**Product images:**



HEK293T cells were transfected with the pCMV6-ENTRY control (Left lane) or pCMV6-ENTRY CD2 ([RC206612], Right lane) cDNA for 48 hrs and lysed. Equivalent amounts of cell lysates (5 ug per lane) were separated by SDS-PAGE and immunoblotted with anti-CD2. Positive lysates [LY400671] (100ug) and [LC400671] (20ug) can be purchased separately from OriGene.



Flow cytometric analysis of living 293T cells transfected with CD2 overexpression plasmid ([RC206612], Red)/empty vector ([PS100001], Blue) using anti-CD2 antibody (TA800674). Cells incubated with a non-specific antibody (Green) were used as isotype control (1:100).