

## Product datasheet for **TA800655M**

### CD2 Mouse Monoclonal Antibody [Clone ID: OTI1C5]

#### Product data:

Product Type:	Primary Antibodies
Clone Name:	OTI1C5
Applications:	FC, IHC, WB
Recommended Dilution:	WB 1:2000~4000, IHC 1:500
Reactivity:	Human, Dog, Rat, Mouse
Host:	Mouse
Isotype:	IgG1
Clonality:	Monoclonal
Immunogen:	Full length human recombinant protein of human CD2 (NP_001758) produced in HEK293T cell.
Formulation:	PBS (pH 7.3) containing 1% BSA, 50% glycerol and 0.02% sodium azide.
Concentration:	1 mg/ml
Purification:	Purified from mouse ascites fluids or tissue culture supernatant by affinity chromatography (protein A/G)
Conjugation:	Unconjugated
Storage:	Store at -20°C as received.
Stability:	Stable for 12 months from date of receipt.
Predicted Protein Size:	39.3 kDa
Gene Name:	CD2 molecule
Database Link:	<a href="#">NP_001758</a> <a href="#">Entrez Gene 12481 Mouse</a> <a href="#">Entrez Gene 497761 Rat</a> <a href="#">Entrez Gene 607448 Dog</a> <a href="#">Entrez Gene 914 Human</a> <a href="#">P06729</a>



[View online »](#)

**Background:**

CD2 is a surface antigen of the human T-lymphocyte lineage that is expressed on all peripheral blood T cells (summarized by Sewell et al., 1986 [PubMed 3490670]). It is one of the earliest T-cell markers, being present on more than 95% of thymocytes; it is also found on some natural killer cells but not on B lymphocytes. Monoclonal antibodies directed against CD2 inhibit the formation of rosettes with sheep erythrocytes, indicating that CD2 is the erythrocyte receptor or is closely associated with it. [supplied by OMIM, Jul 2010]

**Synonyms:**

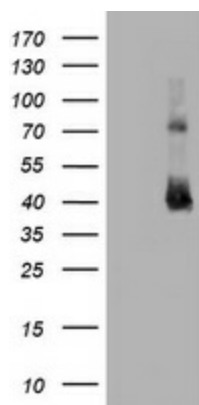
LFA-2; SRBC; T11

**Protein Families:**

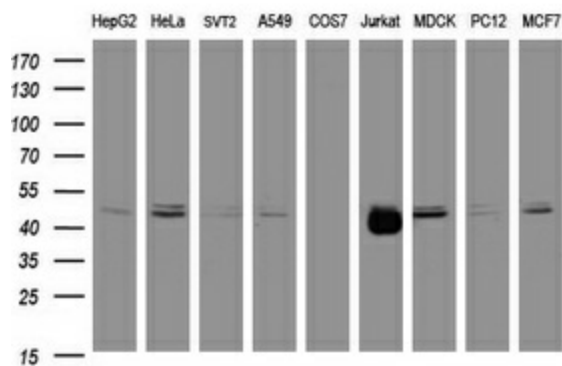
Druggable Genome, Transmembrane

**Protein Pathways:**

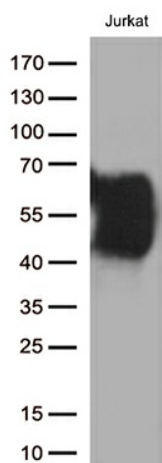
Cell adhesion molecules (CAMs), Hematopoietic cell lineage

**Product images:**


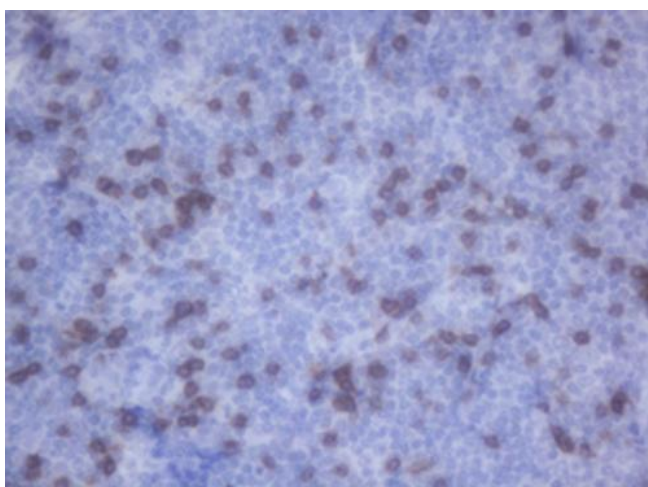
HEK293T cells were transfected with the pCMV6-ENTRY control (Cat# [PS100001], Left lane) or pCMV6-ENTRY CD2 (Cat# [RC206612], Right lane) cDNA for 48 hrs and lysed. Equivalent amounts of cell lysates (5 ug per lane) were separated by SDS-PAGE and immunoblotted with anti-CD2 (Cat# [TA800655])(1:4000).



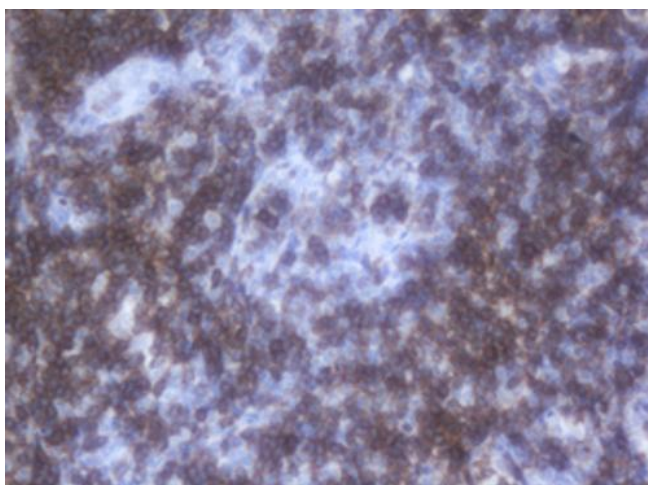
Western blot analysis of extracts (35ug) from 9 different cell lines by using anti-CD2 monoclonal antibody (HepG2: human; HeLa: human; SVT2: mouse; A549: human; COS7: monkey; Jurkat: human; MDCK: canine; PC12: rat; MCF7: human).



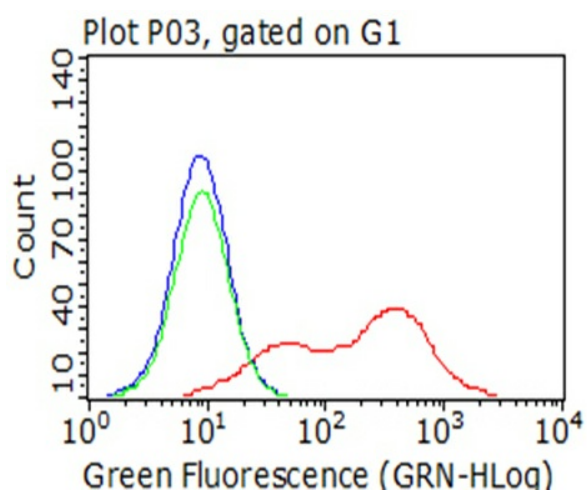
Western blot analysis of extracts (35ug) from 1 cell line lysate by using anti-CD2 monoclonal antibody (1:500).



Immunohistochemical staining of paraffin-embedded Human lymphoma tissue using anti-CD2 mouse monoclonal antibody. Heat-induced epitope retrieval by EDTA solution buffer pH 8.0 at 120°C for 3 min.



Immunohistochemical staining of paraffin-embedded Human tonsil within the normal limits using anti-CD2 mouse monoclonal antibody. Heat-induced epitope retrieval by EDTA solution buffer pH 8.0 at 120°C for 3 min.



Flow cytometric analysis of living 293T cells transfected with CD2 overexpression plasmid ([RC206612], Red)/empty vector ([PS100001], Blue) using anti-CD2 antibody ([TA800655]). Cells incubated with a non-specific antibody (Green) were used as isotype control (1:100).