

Product datasheet for **TA800600M**

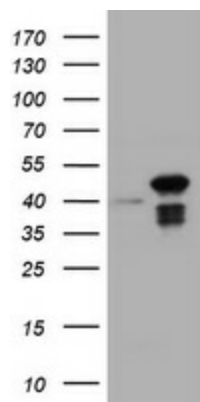
CBX8 Mouse Monoclonal Antibody [Clone ID: OTI1C7]

Product data:

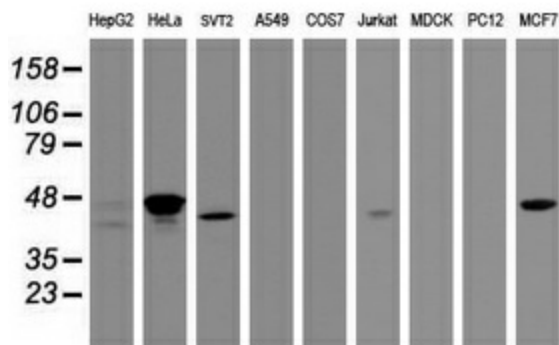
Product Type:	Primary Antibodies
Clone Name:	OTI1C7
Applications:	WB
Recommended Dilution:	WB 1:2000
Reactivity:	Human, Mouse, Rat
Host:	Mouse
Isotype:	IgG1
Clonality:	Monoclonal
Immunogen:	Human recombinant protein fragment corresponding to amino acids 1-260 of human CBX8 (NP_065700) produced in E.coli.
Formulation:	PBS (pH 7.3) containing 1% BSA, 50% glycerol and 0.02% sodium azide.
Concentration:	1 mg/ml
Purification:	Purified from mouse ascites fluids or tissue culture supernatant by affinity chromatography (protein A/G)
Conjugation:	Unconjugated
Storage:	Store at -20°C as received.
Stability:	Stable for 12 months from date of receipt.
Predicted Protein Size:	43.2 kDa
Gene Name:	chromobox 8
Database Link:	NP_065700 Entrez Gene 30951 Mouse Entrez Gene 303731 Rat Entrez Gene 57332 Human Q9HC52
Synonyms:	PC3; RC1
Protein Families:	Transcription Factors


[View online »](#)

Product images:



HEK293T cells were transfected with the pCMV6-ENTRY control (Left lane) or pCMV6-ENTRY CBX8 [RC203417], Right lane) cDNA for 48 hrs and lysed. Equivalent amounts of cell lysates (5 ug per lane) were separated by SDS-PAGE and immunoblotted with anti-CBX8. Positive lysates [LY412158] (100ug) and [LC412158] (20ug) can be purchased separately from OriGene.



Western blot analysis of extracts (35ug) from 9 different cell lines by using anti-CBX8 monoclonal antibody (HepG2: human; HeLa: human; SVT2: mouse; A549: human; COS7: monkey; Jurkat: human; MDCK: canine; PC12: rat; MCF7: human).