

## Product datasheet for **TA800572**

### c-Jun (JUN) Mouse Monoclonal Antibody [Clone ID: OTI3C2]

#### Product data:

Product Type:	Primary Antibodies
Clone Name:	OTI3C2
Applications:	WB
Recommended Dilution:	WB 1:2000
Reactivity:	Human, Mouse, Rat
Host:	Mouse
Isotype:	IgG1
Clonality:	Monoclonal
Immunogen:	Full length human recombinant protein of human JUN (NP_002219) produced in E.coli.
Formulation:	PBS (pH 7.3) containing 1% BSA, 50% glycerol and 0.02% sodium azide.
Concentration:	1 mg/ml
Purification:	Purified from mouse ascites fluids or tissue culture supernatant by affinity chromatography (protein A/G)
Conjugation:	Unconjugated
Storage:	Store at -20°C as received.
Stability:	Stable for 12 months from date of receipt.
Predicted Protein Size:	35.5 kDa
Gene Name:	Jun proto-oncogene, AP-1 transcription factor subunit
Database Link:	<a href="#">NP_002219</a> <a href="#">Entrez Gene 16476 Mouse</a> <a href="#">Entrez Gene 24516 Rat</a> <a href="#">Entrez Gene 3725 Human</a> <a href="#">P05412</a>
Background:	This gene is the putative transforming gene of avian sarcoma virus 17. It encodes a protein which is highly similar to the viral protein, and which interacts directly with specific target DNA sequences to regulate gene expression. This gene is intronless and is mapped to 1p32-p31, a chromosomal region involved in both translocations and deletions in human malignancies. [provided by RefSeq]
Synonyms:	AP-1; AP1; c-Jun

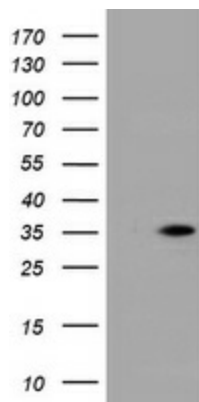


[View online »](#)

**Protein Families:** Druggable Genome, ES Cell Differentiation/IPS, Transcription Factors

**Protein Pathways:** B cell receptor signaling pathway, Colorectal cancer, Epithelial cell signaling in Helicobacter pylori infection, ErbB signaling pathway, Focal adhesion, GnRH signaling pathway, MAPK signaling pathway, Neurotrophin signaling pathway, Pathways in cancer, Renal cell carcinoma, T cell receptor signaling pathway, Toll-like receptor signaling pathway, Wnt signaling pathway

**Product images:**



HEK293T cells were transfected with the pCMV6-ENTRY control (Left lane) or pCMV6-ENTRY JUN ([RC209804], Right lane) cDNA for 48 hrs and lysed. Equivalent amounts of cell lysates (5 ug per lane) were separated by SDS-PAGE and immunoblotted with anti-JUN. Positive lysates [LY400825] (100ug) and [LC400825] (20ug) can be purchased separately from OriGene.