

Product datasheet for **TA800559AM**

CCDC93 Mouse Monoclonal Antibody (Biotin conjugated) [Clone ID: OTI6E11]

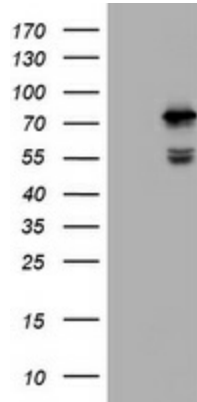
Product data:

Product Type:	Primary Antibodies
Clone Name:	OTI6E11
Applications:	IHC, WB
Recommended Dilution:	WB 1:2000, IHC 1:150
Reactivity:	Human, Dog, Monkey, Mouse, Rat
Host:	Mouse
Isotype:	IgG1
Clonality:	Monoclonal
Immunogen:	Human recombinant protein fragment corresponding to amino acids 293-631 of human CCDC93 (NP_061917) produced in E.coli.
Formulation:	PBS (pH 7.3) containing 1% BSA, 50% glycerol and 0.02% sodium azide.
Concentration:	0.5 mg/ml
Purification:	Purified from mouse ascites fluids or tissue culture supernatant by affinity chromatography (protein A/G)
Conjugation:	Biotin
Storage:	Store at -20°C as received.
Stability:	Stable for 12 months from date of receipt.
Predicted Protein Size:	73 kDa
Gene Name:	coiled-coil domain containing 93
Database Link:	NP_061917 Entrez Gene 70829 Mouse Entrez Gene 304743 Rat Entrez Gene 476119 Dog Entrez Gene 694513 Monkey Entrez Gene 54520 Human Q567U6
Synonyms:	FLJ10996; FLJ25197; MGC13033

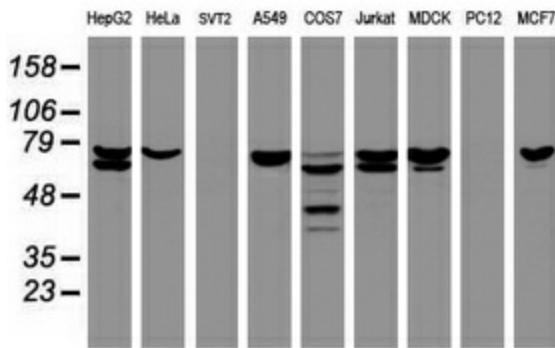


[View online »](#)

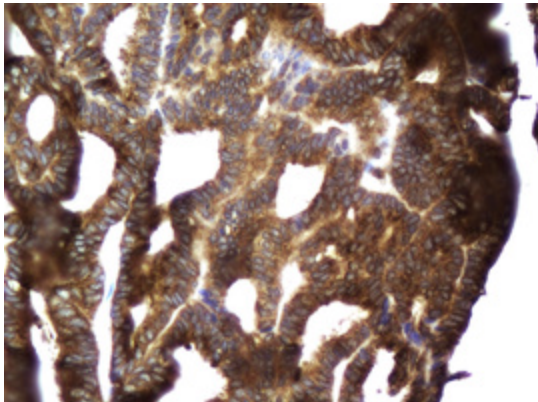
Product images:



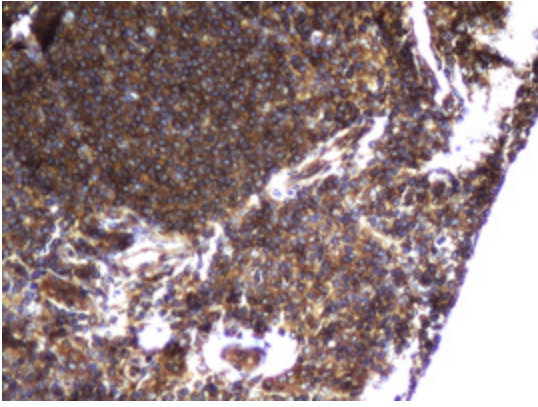
HEK293T cells were transfected with the pCMV6-ENTRY control (Cat# [PS100001], Left lane) or pCMV6-ENTRY CCDC93 (Cat# [RC206101], Right lane) cDNA for 48 hrs and lysed. Equivalent amounts of cell lysates (5 ug per lane) were separated by SDS-PAGE and immunoblotted with anti-CCDC93(Cat# [TA800559]). Positive lysates [LY412751] (100ug) and [LC412751] (20ug) can be purchased separately from OriGene.



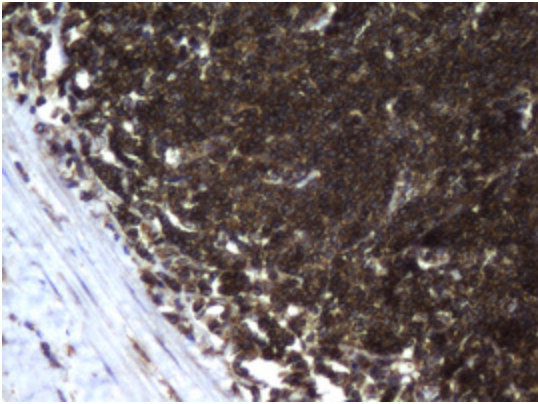
Western blot analysis of extracts (35ug) from 9 different cell lines by using anti-CCDC93 monoclonal antibody (HepG2: human; HeLa: human; SVT2: mouse; A549: human; COS7: monkey; Jurkat: human; MDCK: canine; PC12: rat; MCF7: human).



Immunohistochemical staining of paraffin-embedded Adenocarcinoma of Human endometrium tissue using anti-CCDC93 mouse monoclonal antibody. (Heat-induced epitope retrieval by 10mM citric buffer, pH6.0, 100°C for 10min, [TA800559])



Immunohistochemical staining of paraffin-embedded Human lymph node tissue within the normal limits using anti-CCDC93 mouse monoclonal antibody. (Heat-induced epitope retrieval by 10mM citric buffer, pH6.0, 100°C for 10min, [TA800559])



Immunohistochemical staining of paraffin-embedded Human lymphoma tissue using anti-CCDC93 mouse monoclonal antibody. (Heat-induced epitope retrieval by 10mM citric buffer, pH6.0, 100°C for 10min, [TA800559])